

# INSTALLATION GUIDELINES

## Preparation

1. Prepare the base floor. It is important that the base floor is clean (free from loose dirt and concrete dust), flat (within National Building Standards +/- 5mm over a 5m span) and where possible, dry.
2. Unroll the **Regupol® 6010BA**. When the product is rolled up it stretches slightly. Unwind each roll where it is to be installed and leave it for a minimum of 8 hours before measuring or cutting to length.

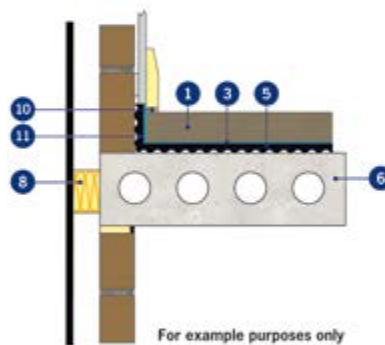
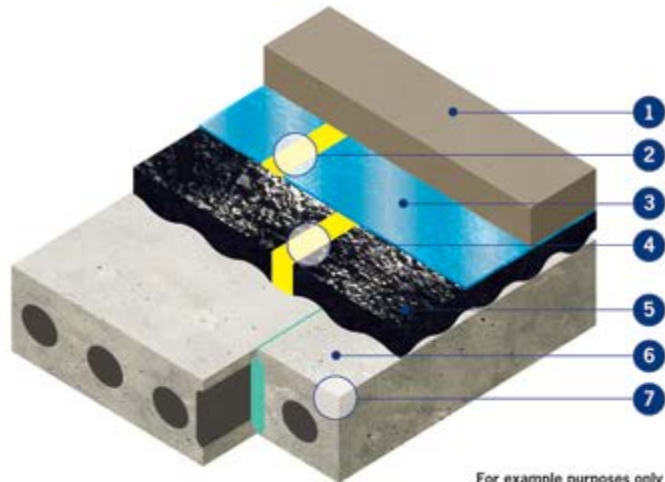
## Description

**Regupol® 6010BA** is a recycled tyre crumb product designed for use where high loads are apparent and acoustic performance is critical.

## Laying Guidelines

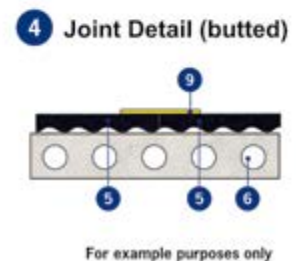
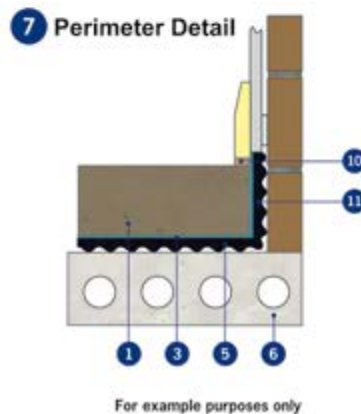
1. The **Regupol® 6010BA** perimeter strips must be installed first, with the dimpled face of the material butted against the perimeter walls. These strips can either be cut to the required width on site using a sharp knife/power tool and straight edge or pre cut strips can be ordered individually. **N.B.** The perimeter strips should be at least 10mm above the finished screed. Excess material to be trimmed down after the screed has set.
2. The **Regupol® 6010BA** must then be laid dimpled side down. Use a sharp knife and straight edge for cutting to size.
3. All exposed joints of the **Regupol® 6010BA** on the vertical upturns must also be taped with **Regupol®** Tape or similar approved.
4. It is essential that the area to be screeded is checked for any exposure of the subfloor and that the **Regupol® 6010BA** and Polythene remain undamaged and that all joints are taped. Double checking at this point is imperative.
5. Lay a polythene membrane, minimum of 500 gauge over the entire area. Joints must be overlapped by at least 100mm and must also cover the upturned edges of the **Regupol®**. All joints must be taped to prevent movement during the casting process.

You can now cast the screed taking the usual precautions to avoid damaging or moving the membrane and the **Regupol®**.



- 1 Minimum 65mm sand/cement screed
- 2 Taped joint\*
- 3 min. 500 gauge polythene membrane
- 4 Joint detail (butted only)
- 5 **Regupol® 6010BA** 17mm layer
- 6 150mm (min) pre-cast concrete
- 7 Perimeter detail
- 8 Acoustic cavity closer
- 9 **Regupol®** hi-tack tape or similar approved
- 10 Acoustic Sealant
- 11 **Regupol 6010BA** Perimeter Strip

\* DPM overlap to be minimum 100mm



To access the CMS Danskinn website for further product information please scan the QR code

**IMPORTANT:** Directions for use are given for guidance only and are not intended to form part of any contract. They should be varied or adapted to suit your particular materials or conditions of use. Goods supplied by the company are made to approved standards from the highest quality raw materials but no warranty or guarantee is given as to their suitability for any particular purpose or application, and no liability is accepted for any loss or damage arising directly or indirectly from the use of the Company's products irrespective of any information given to us as to intended use of such products. It is therefore recommended that prospective users should test a sample of this product under their own conditions to satisfy themselves that the product is suitable for the purpose intended.

### Important Note:

- The **Regupol® 6010BA** heavy duty screed isolation must be butt jointed. Both the screed thickness and method of installation must be advised by the contractor responsible for the screed package.
- Manual Handling Guidelines and health and safety datasheets are available on request.

**Regupol® and Regufoam® are registered trade marks of BSW GmbH**

### Scotland Office:

1 Netherton Road, Wishaw ML2 0EQ

### Central/Southern Office:

Unit 2 Lyncastle Road, Warrington, Cheshire WA4 4SN

email: [info@cmsdanskinn.co.uk](mailto:info@cmsdanskinn.co.uk) website: [www.cmsdanskinn.co.uk](http://www.cmsdanskinn.co.uk)

t: 01698 356000 f: 01698 372222

t: 01925 577711 f: 01925 577733