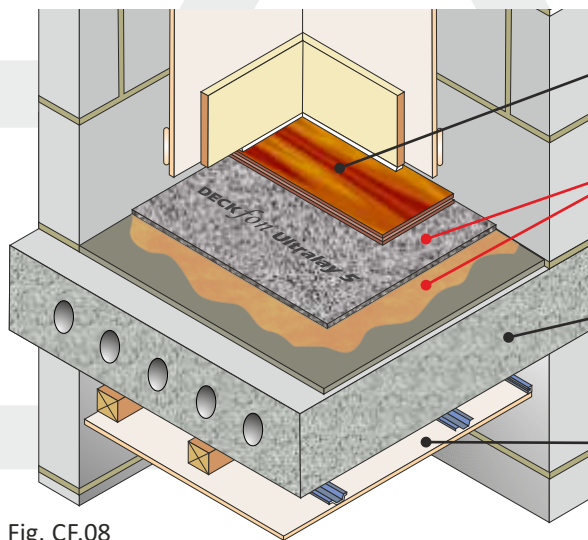


Separating floor - Pre-cast concrete plank

CELLECTA **DECKfon**[®] **Ultralay** soft floor covering fully bonded to structural concrete floor

Suitable for Floor type 1^(a) and Floor type 2^(b)



Floor finish (installed after acoustic testing)
Carpet
Wooden flooring
Ceramic tiles^(c)

Resilient layer CELLECTA **DECKfon**[®] **Ultralay 3/5**
fully bonded to the concrete floor slab with
CELLECTA **UL80** adhesive

Structural floor • 150mm (min) pre-cast concrete floor plank slab, with 10mm (min) bonded screed

Ceiling See Table CF.08 for ceiling treatment options

Fig. CF.08

FASTRACKCAD
ARCHITECTURAL CAD DATABASES

BS Plus

Table CF.08

Installation options

Soft floor covering

DECKfon[®] **Ultralay 3**

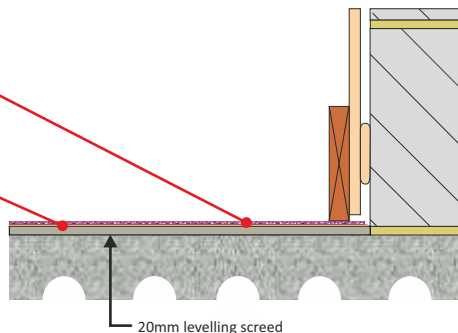
Dimensions: 3mm x 1.2m x 15m (18m²)

CELLECTA UL80

Soft floor covering adhesive

Size: 15kg tub (up to 80m² coverage)

Airborne	Building Regulations
55dB $R_w + C_{tr}$	$\geq +5dB$
Impact	Impact
57dB $L_{n,w}$	22dB $DL_{n,w}$



20mm levelling screed

Soft floor covering

DECKfon[®] **Ultralay 5**

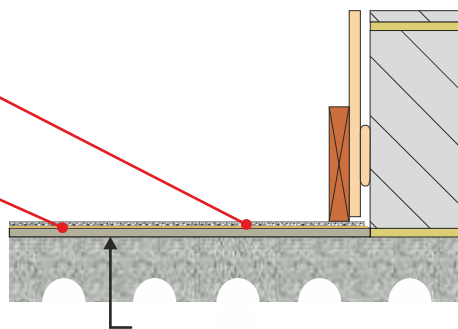
Dimensions: 5mm x 1.2m x 10m (10m²)

CELLECTA UL80

Soft floor covering adhesive

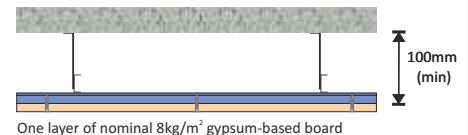
Size: 15kg tub (up to 80m² coverage)

Airborne	Building Regulations
55dB $R_w + C_{tr}$	+ 8dB
Impact	Impact
47dB $L_{n,w}$	31dB $DL_{n,w}$

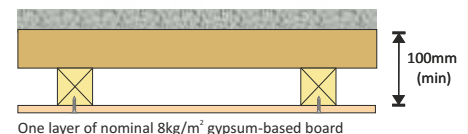


Ceiling treatment options

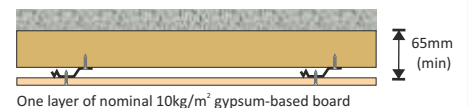
Metal frame ceiling system (CT1, 2 or 3)
Any metal frame ceiling system providing 100mm (min) ceiling void



Timber battens & counter battens



Timber battens & metal resilient bars



Construction notes

- ^(a) Floor type 1: Concrete base with ceiling and soft floor covering.
^(b) Suitable for improving the acoustic performance of Floor type 2: Concrete base with ceiling and floating layer.
^(c) Ceramic tile must be a minimum 150mm x 150mm (min).

Acoustic Performance

Test data quoted has been conducted in a UKAS accredited laboratory in accordance with Approved Document E: Annex B: Procedures for sound insulation testing.
Airborne results tested in accordance with BS EN ISO 140-3:1995
Impact results tested in accordance with BS EN ISO 140-6: 1998
DLw measured in accordance with BS EN ISO 140-8: 1998.
dB values quoted do not include the additional benefit of a ceiling treatment.

Third Party Accreditation and Approvals

Accepted by
NHBC
LABC
warranty
premier
guarantee

ISO 9001: 2004

Environmental Credentials

GWP
<5
Code Credits
Pol 1 1

100%
Recyclable

zero
ODP

Hea 2 4