

Separating floor - In-situ concrete slab

Screed laid on **CELLECTA** resilient layers

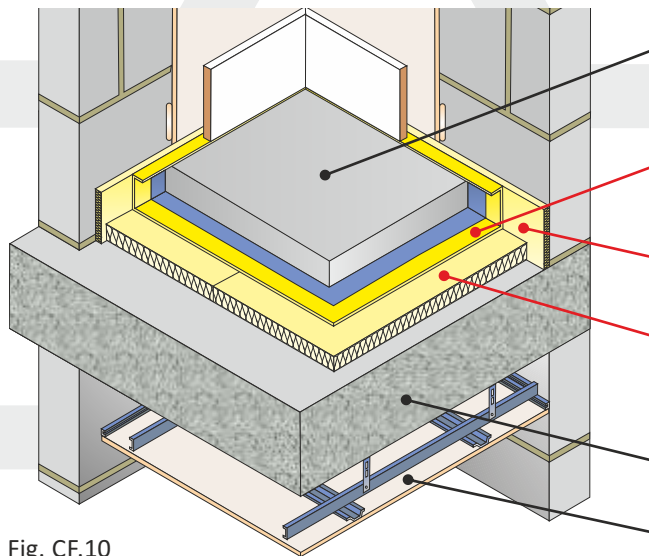


Fig. CF.10

- Screed
 - 65mm (min) sand cement screed
 - 40mm proprietary screed, nominal 80kg/m² mass per unit area
- Resilient layer 1
 - 5mm **CELLECTA YELOfon® HD5** extruded polyethylene (30kg/m³)
- Isolating edge strip
 - 10mm **CELLECTA YELOfon® ES10/100** extruded polyethylene
- Resilient layer (2)
 - 25mm (min) **CELLECTA XFLOOR 250** extruded polystyrene insulation board. (See Table. CF10 for full details)
- Structural floor
 - 150mm (min) in-situ concrete floor
 - 300kg/m² (min) mass per unit area
- Ceiling
 - See Table CF10 for ceiling treatment options

FASTRACKCAD
ARCHITECTURAL CAD DATABASES

نيسPlus

Table CF.10

Installation options

Under screed resilient layer 1

YELOfon® HD5

High density polyethylene foam
Dimensions: 5mm x 1.5m x 75 (112.5m³)

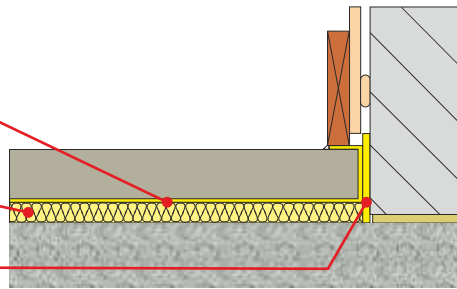
Under screed resilient layer 2

XFLOOR 250/300

High performance extruded polystyrene
Dimensions: 20-160mm x 600mm x 2500mm

YELOfon® ES10/100

Perimeter edge strip
Dimensions: 10mm x 100mm x 50m



Screed containing underfloor heating system

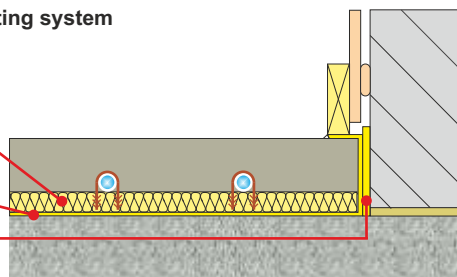
Resilient layer 1

XFLOOR 250/300

Resilient layer 2

YELOfon® HD5

YELOfon® ES10/100

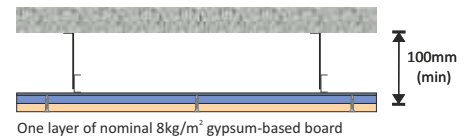


Construction notes

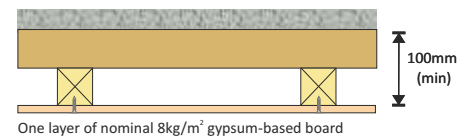
Materials must be installed in accordance with manufacturers' instructions to achieve stated acoustic values.
Wall treatments MUST be isolated from the floating floor with **YELOfon HD5** and **ES10/100** flanking strip.

Ceiling treatment options

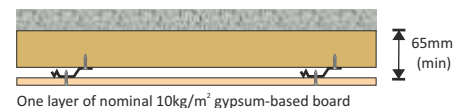
Metal frame ceiling system (CT1, 2 or 3)
Any metal frame ceiling system providing 100mm (min) ceiling void



Timber battens & counter battens



Timber battens & metal resilient bars



IMPORTANT

If adopting this treatment, all three components MUST be installed:

- 1) **YELOfon HD5**
- 2) **XFLOOR 250/300**
- 3) **YELOfon ES10/100**

Acoustic Performance

Airborne: 54dB $D_{nT,w} + C_{tr}$

Impact: 54dB $L_{nT,w}$

Building Regulations

+ 5dB

Values quoted are typical and based on the treatment being installed correctly and pre-completion tested (PCT).
Airborne performance tested in accordance with BS EN ISO 140-4:1998
Impact performance tested in accordance with BS EN ISO 140-7:1998

Third Party Accreditation and Approvals

Accepted by
NHBC
LABC
warranty
premier
guarantee



ISO 9001: 2004

Environmental Credentials



Code Credits

Pol 1 1 Hea 2 2