

Separating floor - Pre-cast concrete plank

Screed laid on **CELLECTA** resilient layers

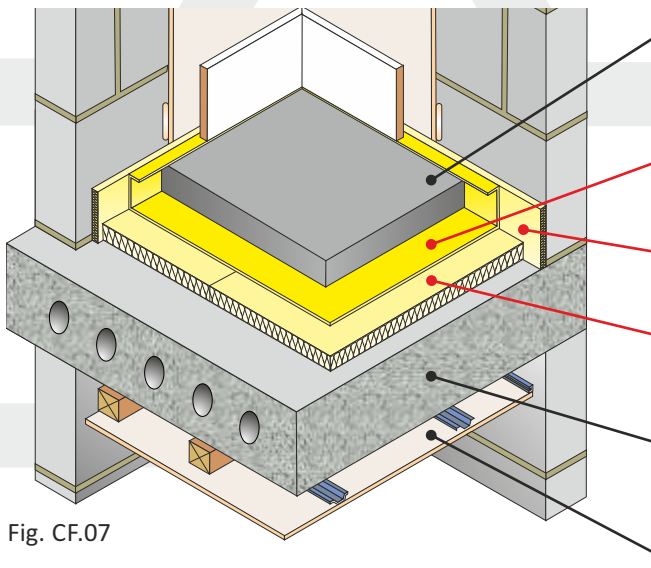


Fig. CF.07

Screed

1st Resilient layer

Isolating edge strip

2nd resilient layer

Structural floor

Ceiling

- 65mm (min) sand cement screed
- 40mm proprietary screed, nominal 80kg/m² mass per unit area

5mm **CELLECTA YELOfon[®] HD5** extruded polyethylene (30kg/m³)
 10mm **CELLECTA YELOfon[®] ES10/100** extruded polyethylene
 25mm (min) **CELLECTA XFLOOR 250** extruded polystyrene insulation board (See Table CF7 for full details)

- 150mm (min) pre-cast concrete floor plank slab
 - 300kg/m² (min) mass per unit area
- See Table CF.07 for ceiling treatment options

FASTRACKCAD
ARCHITECTURAL CAD DATABASES

نصPlus

Table CF.07

Installation options

Under screed resilient layer 1

YELOfon[®] HD5

High density polyethylene foam

Dimensions: 5mm x 1.5m x 75 (75m²)

Under screed resilient layer 2

XFLOOR 250/300

High performance extruded polystyrene

Dimensions: 20-160mm x 600mm x 2500mm

YELOfon[®] ES10/100

Perimeter edge strip

Dimensions: 10mm x 100mm x 50m

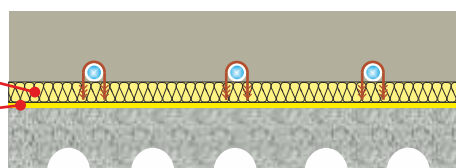
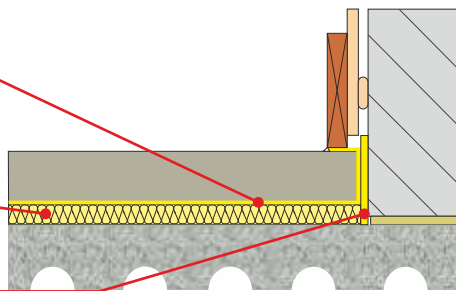
Underfloor heating system incorporated within screed

Resilient layer 1

XFLOOR 250/300

Resilient layer 2

YELOfon[®] HD5



IMPORTANT

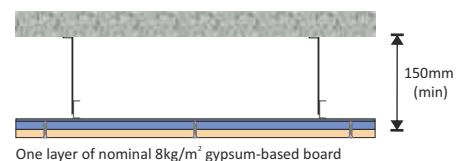
If adopting this treatment, all three components **MUST** be installed:

- 1) **YELOfon HD5**
- 2) **XFLOOR 250**
- 3) **YELOfon ES10/100**

Ceiling treatment options

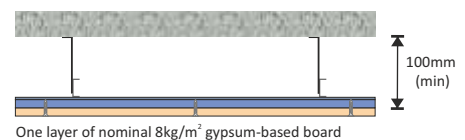
CT0 - Metal ceiling - 150mm void

To be used with 150mm (min) depth concrete planks



CT1 - Metal ceiling - 100mm void

To be used with 200mm (min) depth concrete planks



Construction notes

Materials must be installed in accordance with manufacturers' instructions to achieve stated acoustic values. Wall treatments **MUST** be isolated from the floating floor with **YELOfon ES10/100** flanking strip.

Acoustic Performance

Airborne: 52dB $D_{nT,w} + C_{tr}$

Impact: 54dB $L_{nT,w}$

Building Regulations

+ 5dB

Values quoted are typical and based on the treatment being installed correctly and pre-completion tested (PCT).

Airborne performance tested in accordance with BS EN ISO 140-4:1998

Impact performance tested in accordance with BS EN ISO 140-7:1998

Third Party Accreditation and Approvals



Environmental Credentials



Code Credits

Pol 1	1	Hea 2	3
-------	---	-------	---