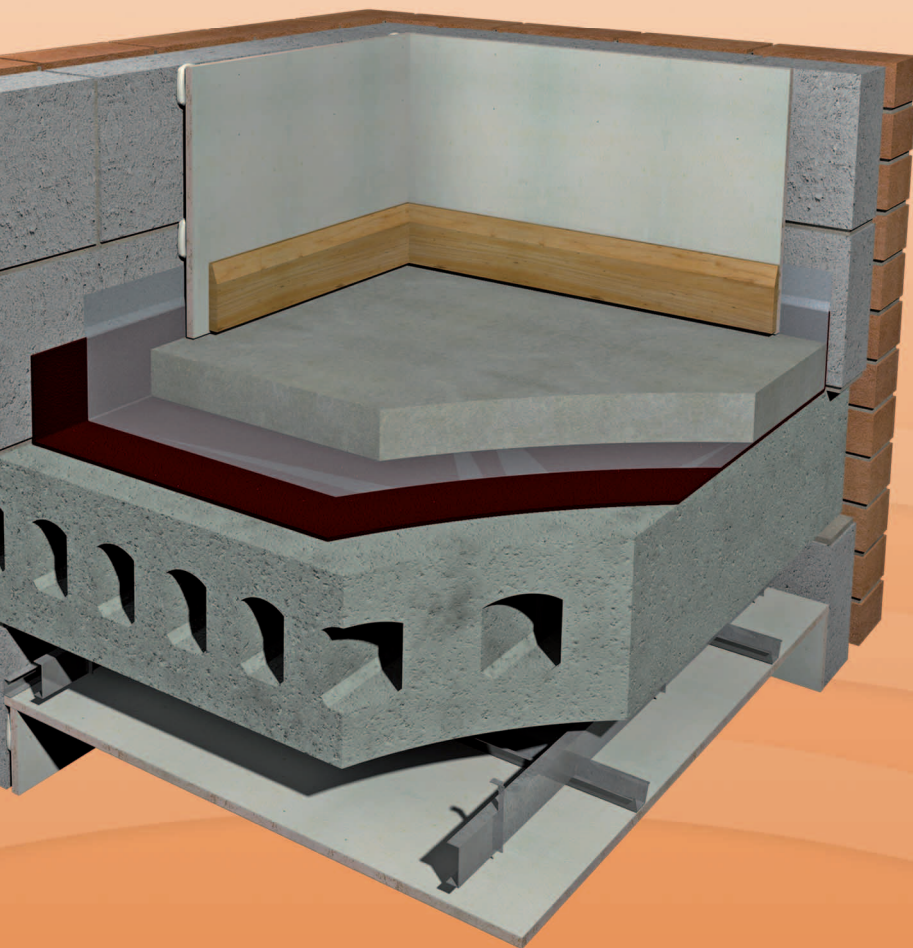


econocheck

Underscreed XL5 System



IMPACT IMPROVEMENT SYSTEM FOR CONCRETE FLOORS

- New build
- Conversions



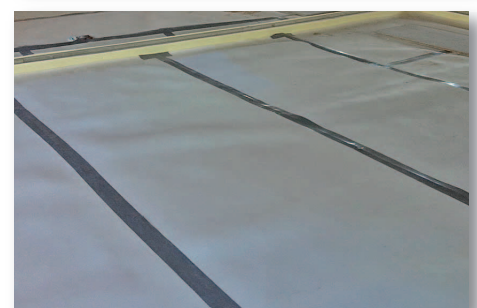
We take the *mystery* out of Acoustics

DESCRIPTION

- ❑ The econocheck under-screed XL5 system from Isomass features a 5mm closed cell cross linked foam layer that has been designed to be placed within a masonry structural floor directly below the screed. This isolates the screed from the structural sub floor, and provides sufficient impact absorption to place it amongst the top performing systems available.
- ❑ By ensuring that all the joints are taped, bridging will be eliminated which is the single greatest cause of failure of any system of this type.
- ❑ When installed correctly, the econocheck XL5 system will enable compliance with Approved Document E 2003 and subsequent amendments in 2004, 2010 & 2013.

BENEFITS

- ❑ Closed cells prevents water absorption which can impair acoustic performance.
- ❑ Rolls are light and easy to handle.
- ❑ All installations over 500m² come with a free site pre screed inspection.



Product data

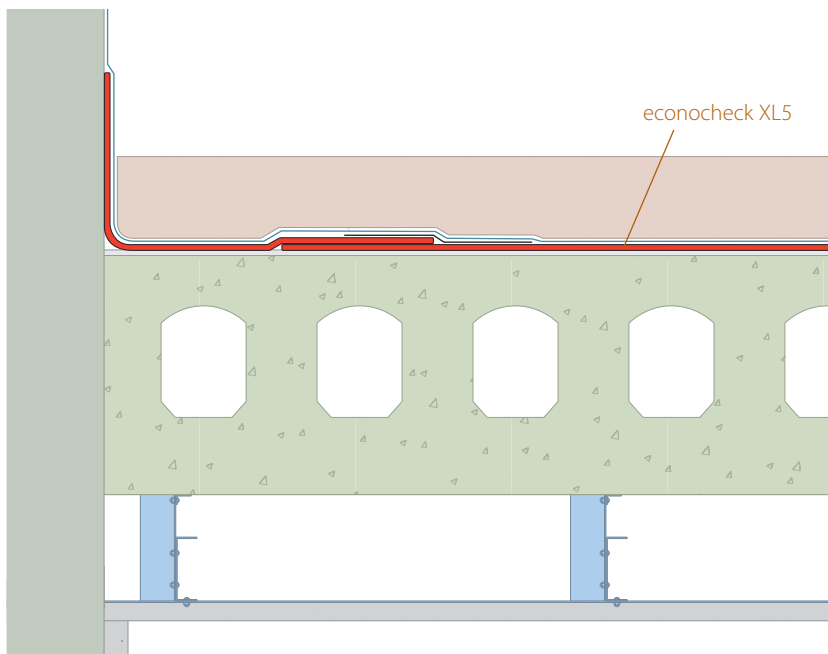
Roll dimensions:	1.5m wide x 50m
Thickness:	5mm
Foam composition:	Closed Cell Cross Linked Isopoli

Performance (on the construction below)

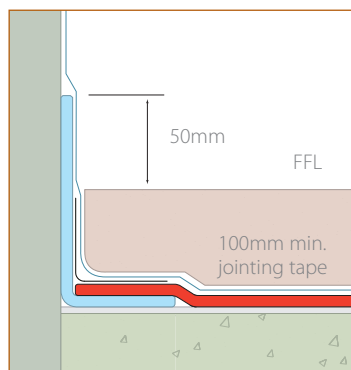
Treated floor with:	$D_{nT,w} + C_{tr}$	$L'_{nT,w}$
econocheck XL5	50dB	≤45dB

based upon the typical construction (commonly 50dB+)

Compliance with Code for Sustainable Homes is possible for econocheck XL5; please contact Isomass for design advice.



- ❑ 80kg/m² sand/cement screed or 65mm proprietary screed.
- ❑ Optional (1000 gauge or 0.25mm) plastic sheeting - to aid screed pouring and maintain joints in econocheck XL5.
- ❑ Econocheck XL5 on grouted sub floor.
- ❑ ≥300kg/m² minimum structural sub floor.
- ❑ 75mm min. void formed by metal frame suspended ceiling system and ≥10kg/m² gypsum board ceiling.



Every effort has been taken in the preparation of this sheet to ensure the accuracy of representations contained herein. Recommendations as to the use of materials, construction details and methods of installation are given in good faith and relate to typical situations. However, every site has different characteristics and reliance should not be placed upon the foregoing recommendations. Advice can be given as to specific applications of the products, upon request to isomass building products.

SPECIFICATION

The acoustic floor shall be:

- ❑ Econocheck Underscreed XL5, manufactured by Isomass Ltd. Unit 11, Avenue Business Park, Off Brockley Road, Elsworth, Cambridgeshire, CB23 4EY and installed in accordance with manufacturer's instructions / recommendations.

INSTALLATION

- ❑ The floor surface should be swept free of any loose debris that may damage or bridge the system.
- ❑ Econocheck XL5 can be rolled up the wall or lapped and taped to a perimeter flanking strip. Either option should allow a minimum 50mm to protrude above the intended FFL of the screed (left).
- ❑ Adjoining roll edges should be butt-jointed and sealed with a minimum 100mm wide jointing tape.
- ❑ Services that penetrate the screed should be isolated by wrapping with Underscreed which again would be taped.
- ❑ When trafficking the floor take care not to perform any unnecessary actions that may cause any of the taped joints to be forced apart.