

isocheck™

28T, 24T 18T & 15T Systems



Recyclable
post-use

OVERLAY PLATFORM SYSTEM DIRECT TO FLOORBOARDS

- New build
- Refurbishments
- Conversions
- Listed buildings requiring minimal structural change



Taking the *mystery* out of Acoustics

DESCRIPTION

- ❑ The Isocheck 28T, 24T and 15T are high performance systems designed to reduce sound transmission through traditional joisted timber floors.
- ❑ Isocheck 28T, 24T and 18T consist of a 6mm layer of Isofiba bonded to 22mm, 18mm or 12mm P5 V313 moisture resistant chipboard, whereas Isocheck 15T consists of a 6mm layer of Isofiba bonded to 9mm moisture resistant medium density fibreboard.
- ❑ When installed as part of a complete sound reduction system, it enables a timber floor to meet the sound transmission regulations of Approved Document E 2003 and subsequent amendments in 2004, 2010, 2013 and 2015.

APPLICATIONS

- ❑ To be used over existing floorboards for new build, refurbishments or conversions with a new resilient bar ceiling.



Isocheck 15T

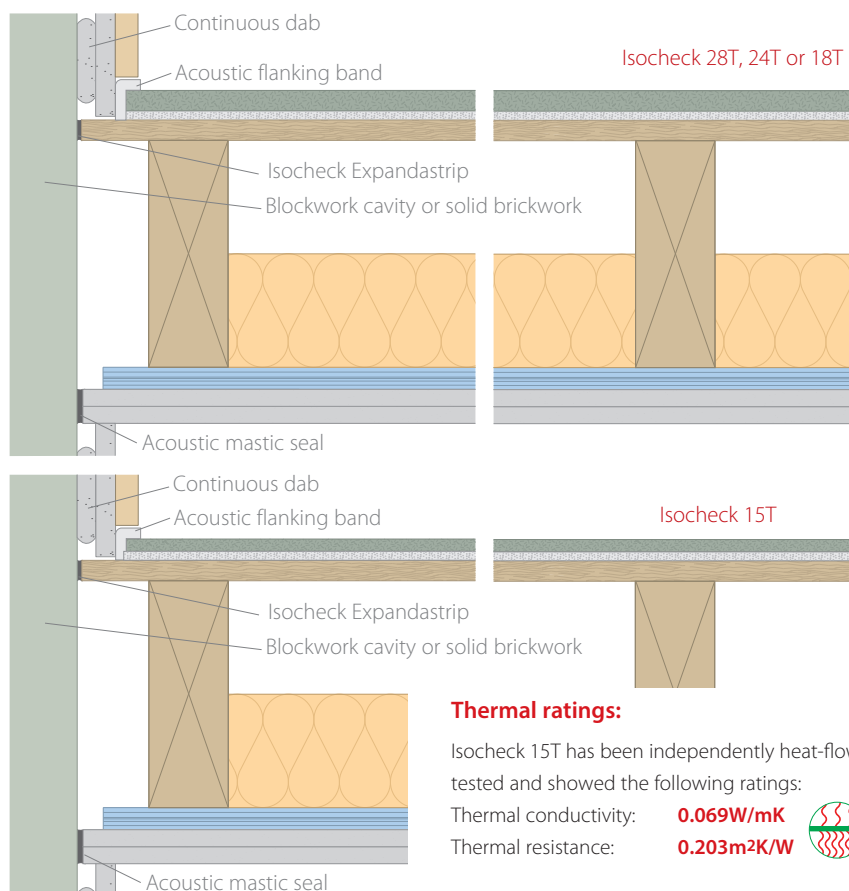
Product data

Overall size:	Isocheck 28T	2400mm x 600mm x 28mm
	Isocheck 24T	2400mm x 600mm x 24mm
	Isocheck 18T	2400mm x 600mm x 18mm
	Isocheck 15T	1200mm x 600mm x 15mm
Resilient layer:		6mm Isofiba
Weight:	Isocheck 28T	23.0kg per sheet
	Isocheck 24T	19.0kg per sheet
	Isocheck 18T	13.0kg per sheet
	Isocheck 15T	5.2kg per sheet

Typical performance expectations (on the constructions illustrated)

Treated floor with:	Airborne		Impact	
	$R_W + C_{tr}$	$D_{nT,w} + C_{tr}$	L'_{nw}	$L'_{nT,w}$
Isocheck 28T	57dB	50dB	48dB	55dB
Isocheck 24T	56dB	49dB	48dB	55dB
Isocheck 18T	55dB	48dB	46dB	53dB
Isocheck 15T	55dB	48dB	45dB	52dB

Site results (in red) for Building Control approval. Laboratory results (in blue) for comparison.*



- Isocheck 28T, 24T, 18T or 15T over floorboards.
- 200mm x 70mm joists @ 450mm centres with 100mm 45kg/m³ insulation between joists.
- 20kg/m² double boarded 25mm o/a plasterboard on resilient bars @ 400mm centres perpendicular to joist direction.

Every effort has been taken in the preparation of this sheet to ensure the accuracy of representations contained herein. Recommendations as to the use of materials, construction details and methods of installation are given in good faith and relate to typical situations. However, every site has different characteristics and reliance should not be placed upon the foregoing recommendations. Advice can be given as to specific applications of the products, upon request to isomass building products.

*Laboratory results are predicted to enable a comparison

www.isomass.co.uk

SPECIFICATION

The acoustic floor shall be:

- Isocheck 28T, 24T, 18T or 15T system, supplied by Isomass Ltd. Unit 14 Papworth Business Park, Stirling Way, Papworth Everard, Cambridgeshire CB23 3GY and installed in accordance with manufacturer's instructions / recommendations.

INSTALLATION

- Apply Isocheck Acoustic Angled Flanking Band on the edges of the Isocheck boards just before they are pushed against the perimeter walls to isolate the board from the wall.
- Lay Isocheck 28T, 24T, 18T or 15T over a structural timber sub-floor, in brick bond pattern, applying Isocheck adhesive to all tongued and grooved panel joints.
- Install skirting and trim off excess Flanking Band.
- Full installation instructions are available and must be used in conjunction when laying this floating floor system.

For advice on treatment of services and penetrations, consult our brochure or visit our website.

Please ask Isomass for guidance when considering the weight of any new blocks which will be incorporated in a wall directly surrounding a timber separating floor.