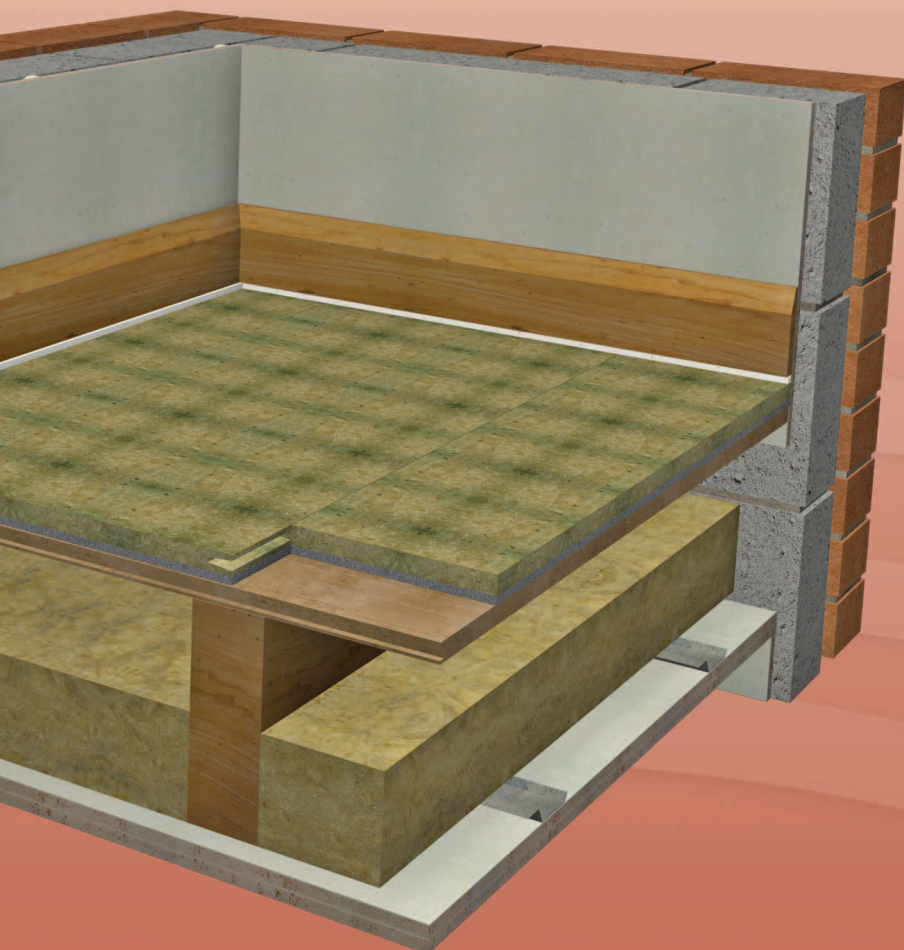


# isocheck™

## PRIMO® 26 & 30

### Systems



#### OVERLAY PLATFORM SYSTEM DIRECT TO FLOORBOARDS

- New build
- Conversions



#### DESCRIPTION

- ❑ The isocheck PRIMO 26 and 30 systems are designed to reduce sound transmission through traditional joisted timber floors.
- ❑ Isocheck PRIMO 26 consists of a 8mm layer of melamine-free APF bonded to 18mm P5 V313 moisture resistant chipboard. Isocheck PRIMO 30 consists of a 8mm layer of APF bonded to 22mm P5 V313 moisture resistant chipboard.
- ❑ When installed as part of a complete sound reduction system, it enables a timber floor to meet the sound transmission regulations of Approved Document E 2003 and subsequent amendments in 2004, 2010, 2013 and 2015.

#### APPLICATIONS

- ❑ To be used over existing floorboards for new build or refurbishments with a new resilient bar ceiling.



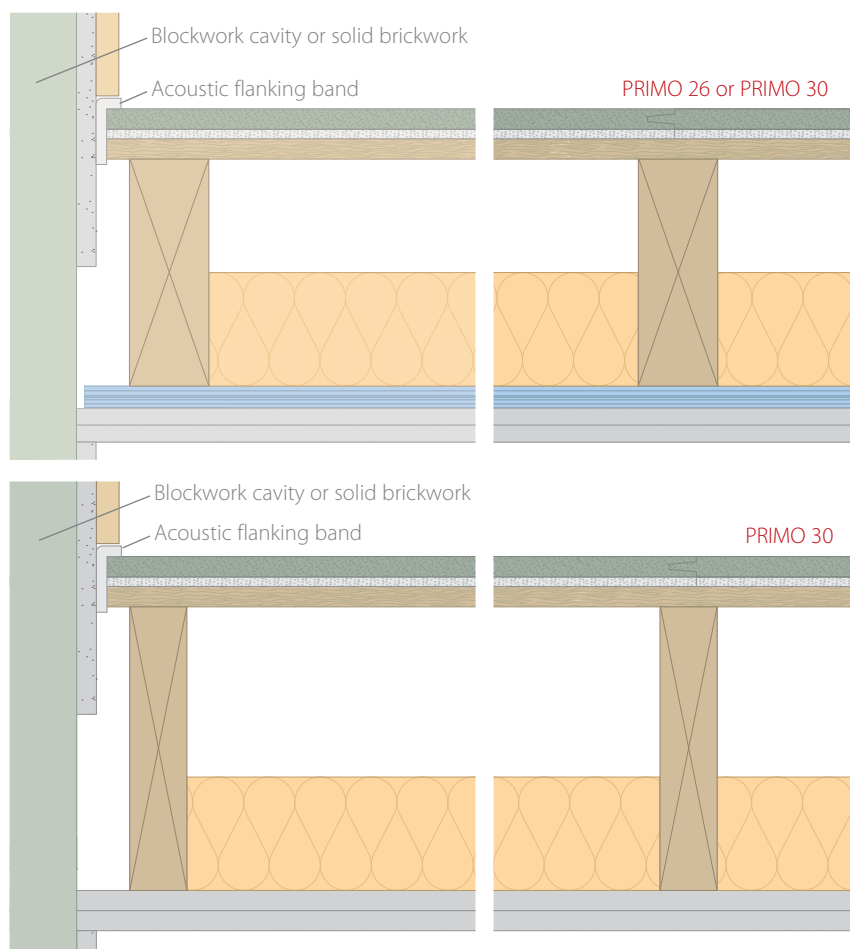
## Product data

Overall size:	Isocheck PRIMO 26	2400mm x 600mm x 26mm
	Isocheck PRIMO 30	2400mm x 600mm x 30mm
Resilient layer:		8mm APF
Weight:	Isocheck PRIMO 26	18.8kg per sheet
	Isocheck PRIMO 30	23.0kg per sheet

## Performance

(On the constructions illustrated)

Treated floor with:	$D_{nT,w} + C_{tr}$	$L'_{nT,w}$
Isocheck PRIMO 26 & 30	$\geq 45\text{dB}$	$\leq 62\text{dB}$



- ❑ Isocheck PRIMO 26 or PRIMO 30 over floorboards.
- ❑ 200mm x 70mm joists @ 450mm centres with 100mm 45kg/m<sup>3</sup> insulation between joists.
- ❑ 20kg/m<sup>2</sup> double boarded 25mm o/a plasterboard on resilient bars @ 400mm centres perpendicular to joist direction. **or**
- ❑ Isocheck PRIMO 30 over floorboards.
- ❑ 250mm x 50mm joists @ 450mm centres with 100mm 45kg/m<sup>3</sup> insulation between joists.
- ❑ 22kg/m<sup>2</sup> double boarded 28mm o/a plasterboard.

Every effort has been taken in the preparation of this sheet to ensure the accuracy of representations contained herein. Recommendations as to the use of materials, construction details and methods of installation are given in good faith and relate to typical situations. However, every site has different characteristics and reliance should not be placed upon the foregoing recommendations. Advice can be given as to specific applications of the products, upon request to isomass building products.

**www.isomass.co.uk**  
**www.monodeck.co.uk**

## SPECIFICATION

The acoustic floor shall be:

- ❑ Isocheck PRIMO 26 or PRIMO 30 system, supplied by Isomass Ltd. Units 10 & 11, Avenue Business Park, Elsworth, Cambridgeshire CB23 4EY and installed in accordance with manufacturer's instructions / recommendations.

## INSTALLATION

- ❑ Apply Isocheck Acoustic Angled Flanking Band on the edges of the Isocheck boards before they are pushed against the perimeter walls to isolate the board from the wall.
- ❑ Lay Isocheck PRIMO 26 or 30 system over a structural timber sub-floor, in brick bond pattern, applying Isocheck adhesive to all tongued and grooved panel joints.
- ❑ Install skirting and trim off excess Flanking Band.
- ❑ Full installation instructions are available and must be used in conjunction when laying this floating floor system.
- ❑ Also for use in timber frame constructions and in a high load version - **Isocheck PRIMO HL** - for bathroom and kitchen applications (see separate product data sheets).

Please ask Isomass for guidance when considering the weight of any new blocks which will be incorporated in a wall directly surrounding a timber separating floor.

**isomass**  
 building acoustics

Isomass Limited, Units 10 & 11, Avenue Business Park,  
 Off Brockley Road, Elsworth, Cambridgeshire CB23 4EY

Tel: 0845 838 33 99 • Fax: 0845 838 33 89

Email: [info@isomass.co.uk](mailto:info@isomass.co.uk) • [www.isomass.co.uk](http://www.isomass.co.uk)