

## INSTALLATION GUIDELINES

### Description

**Regupol® 3912** is a tough, resilient acoustic underlay manufactured from PUR Foam and is ideally suited to refurbishment and timber based constructions to comply with Part E, 2003 of the England and Wales Building regulations and Section H of the Scottish Building regulations. It can also be used for new build but consultation with CMS Danskin Acoustics Technical Support Team is recommended prior to specification.

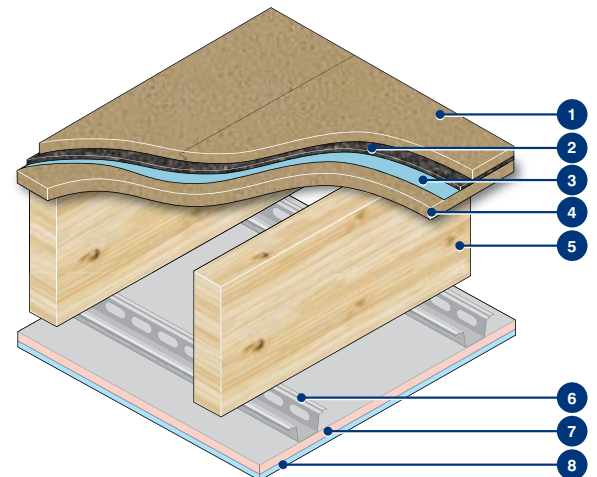
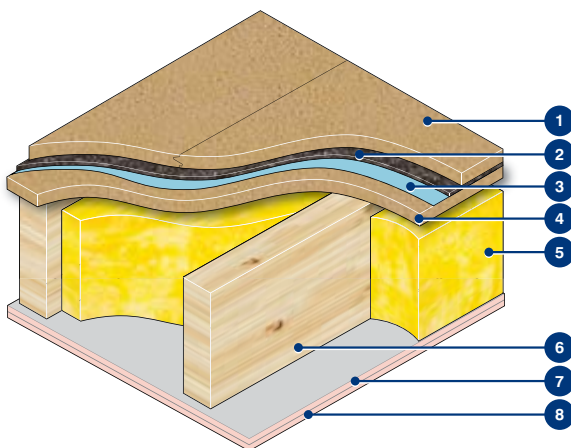
### Preparation

1. Prepare the base floor. It is important that the base floor is clean (free from loose dirt and concrete dust), flat (within National Building Standards +/- 5mm over a 5m span) and where possible, dry.
2. Unroll **Regupol® 3912**. When the product is rolled up it stretches slightly. Unwind each roll where it is to be installed and leave it for a minimum of 8 hours before measuring or cutting to length.

### Installation

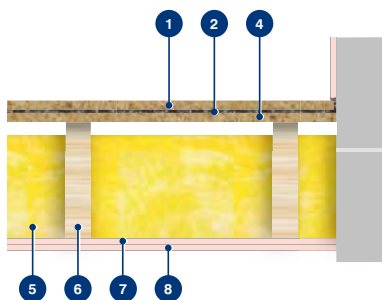
### Laying Guidelines

1. Mechanically fix a layer of 18mm/22mm T & G chipboard flooring to the top of the joists. Glue the T & G joints with PVA.
  2. Attach a layer of 6mm thick **Regupol® 3912** to the top of the chipboard using CMS Bond 100 Adhesive or equal approved.
  3. The **Regupol® 3912** should be lapped up the walls to act as a flanking band, isolating the next layer of floor treatment from directly touching the walls. The lap should be enough to accommodate the depth of the floor treatment plus enough to fold over the top of the floor treatment to allow the plasterboard to the wall areas to be isolated from the floor. Any excess **Regupol® 3912** can be trimmed with a utility knife.
  4. Adhere a layer of minimum 18mm T&G Chipboard to the top of the **Regupol® 3912** using CMS Bond 100 or equal approved. Glue all T&G joints with PVA Glue.
- \*\*Alternatively, carpet can be laid directly over the Regupol 3912 and can either be bonded directly to the Regupol 3912 or installed in the same manner as a standard carpet installation.



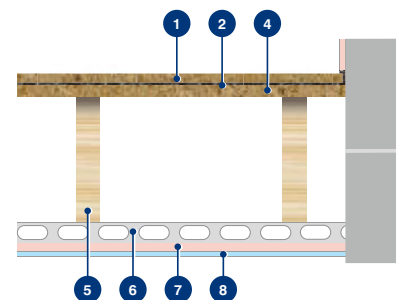
- 1 18mm T&G Chipboard or \*\*Carpet Floor Finish
- 2 Regupol® 3912
- 3 CMS Bond 100 or equal approved
- 4 Minimum 18mm T & G Chipboard
- 5 Minimum 75mm mineral wool, minimum 45kg/m<sup>3</sup>
- 6 225mm deep x 50mm wide wooden joists
- 7 19mm Gyproc Plank and 12.5mm SoundBloc
- 8 Standard plasterboard

#### Ceiling Detail



- 1 18mm T&G Chipboard or \*\*Carpet Floor Finish
- 2 Regupol® 3912
- 3 CMS Bond 100 or equal approved
- 4 22mm Chipboard
- 5 250mm deep x 50mm wide joists
- 6 Suspended 75mm timber frame ceiling on resilient bar
- 7 1 x 19mm Gyproc Plank
- 8 1 x 12.5mm SoundBloc

#### Ceiling Detail



All illustrations for example purposes only



To access the CMS Danskin website for further product information please scan the QR code

**IMPORTANT:** Directions for use are given for guidance only and are not intended to form part of any contract. They should be varied or adapted to suit your particular materials or conditions of use. Goods supplied by the company are made to approved standards from the highest quality raw materials but no warranty or guarantee is given as to their suitability for any particular purpose or application, and no liability is accepted for any loss or damage arising directly or indirectly from the use of the Company's products irrespective of any information given to us as to intended use of such products. It is therefore recommended that prospective users should test a sample of this product under their own conditions to satisfy themselves that the product is suitable for the purpose intended.

**Regupol® and Regufoam® are registered trade marks of BSW GmbH**

**Scotland Office:**  
1 Netherton Road, Wishaw ML2 0EQ

**Central/Southern Office:**  
Unit 2 Lyncastle Road, Warrington, Cheshire WA4 4SN

email: [info@cmsdanskin.co.uk](mailto:info@cmsdanskin.co.uk) website: [www.cmsdanskin.co.uk](http://www.cmsdanskin.co.uk)

t: 01698 356000 f: 01698 372222

t: 01925 577711 f: 01925 577733