

TECHNICAL INFORMATION SHEET

ROBUST DETAIL APPROVED BEAM & BLOCK FLOORS (E-FC-6)



Benefits

- **The UK's only Robust Detail approved system for beam and block floors**
- **European Technical Approval ETA 10/0056**
- Independent Test Data available for both site and field tests to show compliance with both Approved Document E and Section H of the Building Regulations.
- Excellent impact and airborne performance
- Offers long term performance without collapse or "bottoming" out under high point loads
- Resistant to ageing and deformation
- Quick and easy to install with no need for separate perimeter strips
- Minimises construction heights
- Mildew and moisture proof
- Zero global warming potential (GWP) and zero ozone depletion potential (ODP)
- Accreditation to ISO 9001, ISO 14001 and ISO 18001
- Product manufactured using Recycled Materials and 100% recyclable

Applications

Regupol® E48 has been developed to offer enhanced isolation and impact sound performance in:

- apartments
- hotels
- schools
- hospitals
- retail.

Description

Regupol® E48 is a recycled tyre crumb product designed to isolate screeds from the main structure of the building, reducing impact energy generated by general footfall.

With a dimpled surface on one side, which increases air movement and dissipates energy in channels, Regupol® E48 offers enhanced isolation performance and delivers impact sound insulation of 47dB, even under heavy loads.

Physical Information

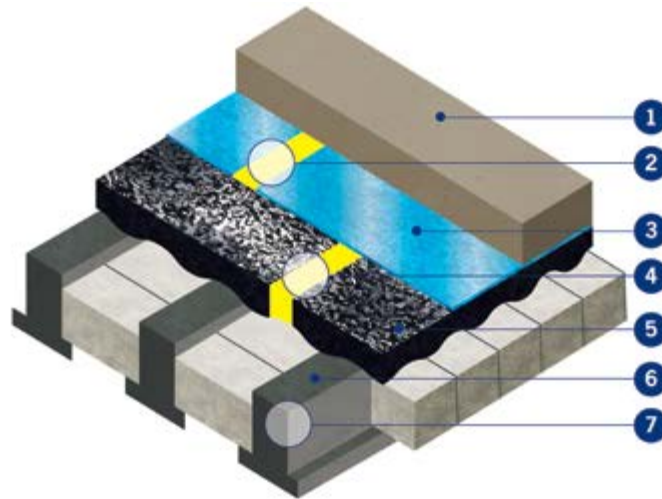
Sheet length	1.15m
Sheet width	13m
Material thickness	8mm nominal (dimpled one side)

Technical Information

Density	approx 600kg/m ³
Tensile strength (DIN 53571)	approx 0.5N/mm ²
Thermal conductivity	approx 0.14W/mK
Elongation at break	approx 47%
Mean Value of Dynamic Stiffness	47MN/m ³
Maximum load bearing capacity	3000kg/m ² (30kN/m ²)
Temperature resistance	-40 °C to +110 °C
Airborne sound insulation (DnT,w + Ctr)	49dB (mean average)
Impact sound insulation (L'nT,w (Ci))	47dB (mean average)

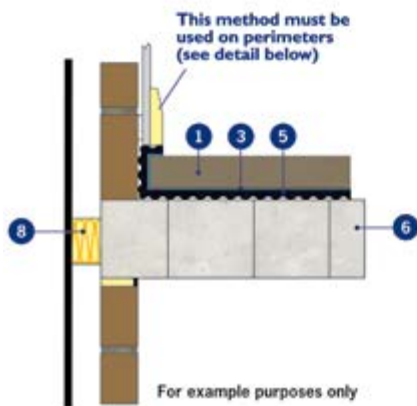
Installation Service

In addition to supply of this product CMS Danskin Acoustic Solutions can provide a listing of competitively-priced approved installers that service anywhere in the UK. Use of this service ensures that installation is performed to the highest standards by tradesmen fully experienced in the specialist skills of fitting CMS Danskin acoustic materials correctly. Please contact CMS Danskin on 01925 577711 for a list of approved and qualified installers.



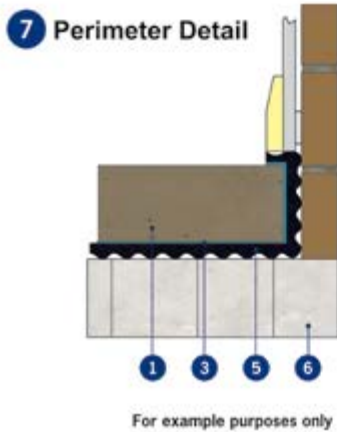
For example purposes only

Ceiling View



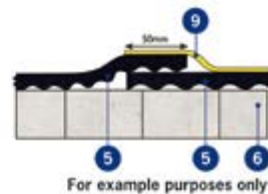
For example purposes only

- | | |
|---|--|
| 1 | 65mm sand cement screed or minimum 40mm proprietary screed |
| 2 | Taped joint* |
| 3 | Minimum 500 gauge polythene |
| 4 | Joint detail** |
| 5 | Regupol® E48 8mm layer |
| 6 | Beam & Block floor, minimum 300kg/m ² |
| 7 | Perimeter detail |
| 8 | Acoustic cavity closer |
| 9 | Regupol® hi-tack tape |
- * DPM overlap to be minimum 100mm
** For Proprietary Screeds



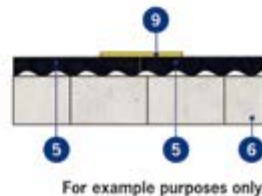
For example purposes only

4 Joint Detail (overlapped)
(Preferred method of installation)



For example purposes only

4 Alternative Joint Detail (butted)



For example purposes only



To access the CMS Danskin website for further product information please scan the QR code

Important Notes:

- Regupol® E48 must be installed dimple side down.
- Manual Handling Guidelines and health and safety datasheets are available on request.

IMPORTANT: Directions for use are given for guidance only and are not intended to form part of any contract. They should be varied or adapted to suit your particular materials or conditions of use. Goods supplied by the company are made to approved standards from the highest quality raw materials but no warranty or guarantee is given as to their suitability for any particular purpose or application, and no liability is accepted for any loss or damage arising directly or indirectly from the use of the Company's products irrespective of any information given to us as to intended use of such products. It is therefore recommended that prospective users should test a sample of this product under their own conditions to satisfy themselves that the product is suitable for the purpose intended.

Regupol® and Regufoam® are registered trade marks of BSW GmbH

Scotland Office:
1 Netherton Road, Wishaw ML2 0EQ
Central/Southern Office:
Unit 2 Lyncastle Road, Warrington, Cheshire WA4 4SN
email: info@cmsdanskin.co.uk website: www.cmsdanskin.co.uk

t: 01698 356000 f: 01698 372222

t: 01925 577711 f: 01925 577733