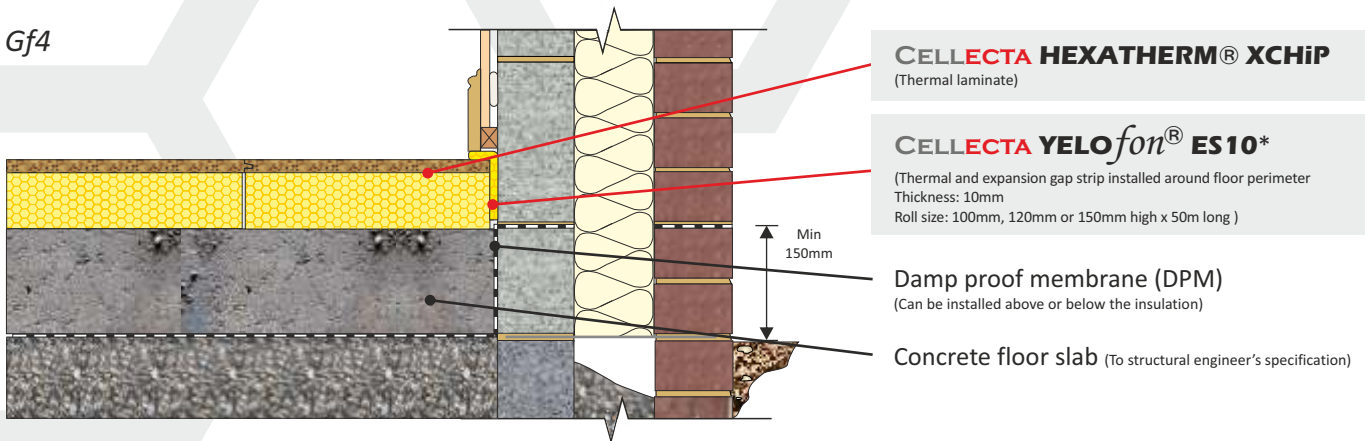


GROUND BEARING CONCRETE FLOOR SLAB



CELLECTA HEXATHERM® XCHIP chipboard/thermal laminate floor board
In-situ concrete floor slab

Gf4



CELLECTA HEXATHERM® XCHIP
(Thermal laminate)

CELLECTA YELOfon® ES10*

(Thermal and expansion gap strip installed around floor perimeter
Thickness: 10mm
Roll size: 100mm, 120mm or 150mm high x 50m long)

Damp proof membrane (DPM)
(Can be installed above or below the insulation)

Concrete floor slab (To structural engineer's specification)



Product Information



CELLECTA XCHIP combines the benefits of a **HEXATHERM** high performance thermal insulation with a P5 moisture resistant, tongue and groove chipboard to produce a high compressive strength, interlocking floor board.

Product Benefits

- Excellent life-long thermal performance
- High compressive strength
- Interlocking, moisture resistant chipboard facing
- Quick to install

Physical Properties (Insulation)

| | | XCHIP |
|--|-------|--------------|
| Thermal Conductivity | ≤80mm | 0.033 |
| EN 12667 (W/mK) | ≥81mm | 0.034 |
| Strength at 10% compression EN 826 (kPa) | ≤30mm | 250 |
| | ≥40mm | 300 |
| Strength at 2% compression EN 1606 (kPa) | ≤30mm | 80 |
| | ≥40mm | 125 |
| Long term water absorption by immersion EN 12087 | | 0.7% |
| Temperature range | | -50/+75 °C |
| Board size (mm) | | 600 x 2400 |
| Overall thickness' including 18mm P5 chipboard facing (mm) (other sizes manufactured to order) | | 38 43 |
| | | 48 58 |
| | | 68 78 |
| | | 93 98 |
| | | 118 138 |
| | | 138 178 |
| Edge profile | | T&G |

*Not applicable under Q-mark Certification

Typical Thickness of Insulation Required

| P/A ratio | HEXATHERM® XCHIP (mm) | | | | | | | |
|-----------|-----------------------|------|------|------|------|------|------|------|
| 0.7 | 100 | 110 | 125 | 150 | 165 | 190 | 230 | 280 |
| 0.6 | 80 | 110 | 120 | 140 | 160 | 190 | 230 | 280 |
| 0.5 | 75 | 100 | 110 | 130 | 150 | 180 | 220 | 270 |
| 0.4 | 75 | 100 | 100 | 120 | 140 | 160 | 210 | 260 |
| 0.3 | 60 | 75 | 90 | 110 | 130 | 150 | 200 | 250 |
| | 0.25 | 0.22 | 0.20 | 0.18 | 0.16 | 0.14 | 0.12 | 0.10 |

U-value (W/m²K)

Calculated in accordance with ISO 15370

Third Party Accreditation and Approvals



Environmental Credentials



Code for Sustainable Homes

The following Code for Sustainable Homes credits are obtainable as a result of incorporating **HEXATHERM®** into the construction detailed.

| Pol 1 | | Mat 1 | |
|--------------|-----------------------------|--------------------|-----------|
| | HEXATHERM XPS boards | Element N° | 820100056 |
| GWP value | <5 | Green Guide rating | C |
| Code credits | 1 | Code credits | 0.5 |

Note. Pol.1 Code credits have an approximate weighted value of 0.7

Note. Mat.1 Code credits have an approximate weighted value of 0.3