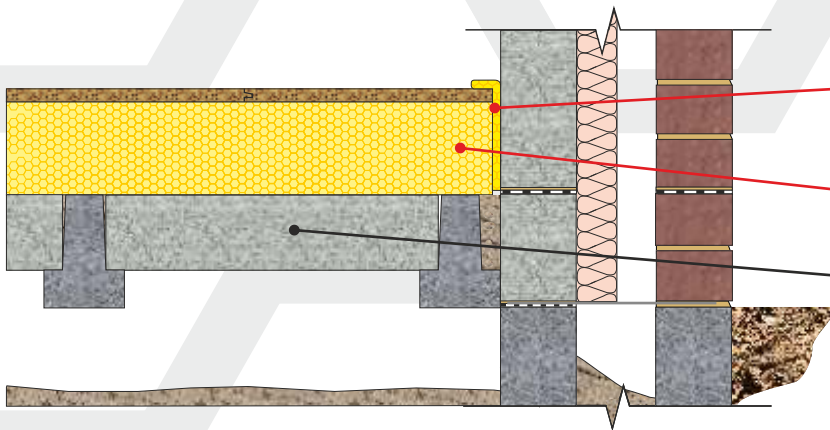


SUSPENDED BEAM AND BLOCK GROUND FLOOR



CELLECTA HEXATHERM® XCHIP chipboard/thermal laminate floor board
Suspended beam and block floor



CELLECTA YELOfon® ES10*

(Thermal and expansion gap strip installed around floor perimeter
Thickness: 10mm
Roll size: 100mm, 120mm or 150mm high x 50m long)

CELLECTA HEXATHERM® XCHIP

(Thermal laminate)

Beam and block flooring

(To structural engineers' specification)

Note: Calculation based on aircrete blocks with a thermal conductivity of 0.19W/mk



Product Information



CELLECTA XCHIP combines the benefits of a **HEXATHERM** high performance thermal insulation with a tongue and groove moisture resistant chipboard to produce a high compressive strength, interlocking floor board.

Product Benefits

- Excellent life-long thermal performance
- High compressive strength
- Interlocking, moisture resistant chipboard facing
- Quick to install

Physical Properties (Insulation)

		XCHIP
Thermal Conductivity	≤80mm	0.033
EN 12667 (W/mK)	≥81mm	0.034
Strength at 10% compression EN 826 (kPa)	≤30mm	250
	≥40mm	300
Strength at 2% compression EN 1606 (kPa)	≤30mm	80
	≥40mm	125
Long term water absorption by immersion EN 12087		0.7%
Temperature range		-50/+75 °C
Board size (mm)		600 x 2400
Overall thickness' including 18mm P5 chipboard facing (mm) (other sizes manufactured to order)		38 43
		48 58
		68 78
		93 98
		118 138
		138 178
Edge profile		T&G

*Not applicable under Q-mark Certification

Typical Thickness of Insulation Required

P/A ratio	HEXATHERM® XCHIP (mm)							
0.7	75	100	110	130	150	180	215	270
0.6	75	100	110	130	150	180	210	270
0.5	75	90	100	120	140	170	220	250
0.4	60	80	100	110	130	160	200	250
0.3	60	75	90	100	130	160	200	240
	0.25	0.22	0.20	0.18	0.16	0.14	0.12	0.10

U-value (W/m²k)

Calculated in accordance with ISO 13370

Third Party Accreditation and Approvals



N° 10224



BE 009119-1



Environmental Credentials



Code for Sustainable Homes

The following Code for Sustainable Homes credits are obtainable as a result of incorporating **HEXATHERM®** into the construction detailed.

Pol 1		Mat 1	
	HEXATHERM XPS boards	Element N°	820140019
GWP value	<5	Green Guide rating	A+
Code credits	1	Code credits	3

Note. Pol.1 Code credits have an approximate weighted value of 0.7

Note. Mat.1 Code credits have an approximate weighted value of 0.3