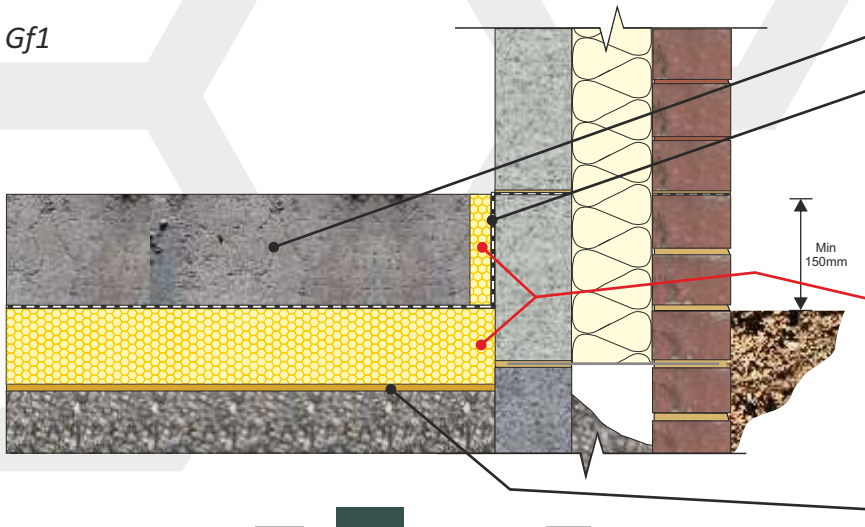


GROUND BEARING CONCRETE FLOOR SLAB



CELLECTA HEXATHERM® XFLOOR insulation installed below the concrete slab

Gf1



Concrete slab (To structural engineer's specification)

Damp proof membrane (DPM)
(Can be installed above or below the insulation)

CELLECTA HEXATHERM® XFLOOR 250 (Domestic/commercial applications)

CELLECTA HEXATHERM® XFLOOR 300 (Domestic/commercial applications)

CELLECTA HEXATHERM® XFLOOR 500 (Commercial/industrial applications)

CELLECTA HEXATHERM® XFLOOR 700 (Industrial applications)

Blinding



Product Information



XFLOOR extruded polystyrene thermal insulation boards are designed specifically for domestic, commercial and industrial flooring applications where a high resistance to compression and water absorption is required.

Product Benefits

- ⬡ Excellent life-long thermal performance
- ⬡ High compressive strength
- ⬡ Very low water absorption
- ⬡ Closed cell structure

Physical Properties

	XFLOOR			
	250	300	500	700
Thermal Conductivity $\leq 80\text{mm}$ EN 12667 (W/mK)	0.033 -	0.033 0.034	0.035	0.034 0.036
Strength at 10% compression EN 826 (kPa)	250 kPa	300 kPa	500 kPa	700 kPa
Strength at 2% compression EN 1606 (kPa)	80 kPa	125 kPa	180 kPa	250 kPa
Long term water absorption by immersion EN 12087	0.7%	0.7%	0.7%	0.7%
Temperature range	-50/+75 °C	-50/+75 °C	-50/+75 °C	-50/+75 °C
Board size (mm)	600 x 2500	600 x 2500	600 x 1250	600 x 1250
Thickness* (mm) (other sizes manufactured to order)	20 25 30	40 50 60 75 80 100 120 140 160	50 60 75 80 100 120 140 160	50 60 80 100 120 140 160
Edge profile				
	Square	Square	Shiplap	Shiplap

(1) Excluding XFLOOR 500 (2) Excluding XFLOOR 700

Typical Thickness of Insulation Required

P/A ratio	HEXATHERM® XFLOOR 300 (mm)							
0.7	100	110	125	150	165	190	230	280
0.6	80	110	120	140	160	190	230	280
0.5	75	100	110	130	150	180	220	270
0.4	75	100	100	120	140	160	210	260
0.3	60	75	90	110	130	150	200	250
	0.25	0.22	0.20	0.18	0.16	0.14	0.12	0.10

U-value (W/m²K)
Calculated in accordance with ISO 15370

Third Party Accreditation and Approvals



Environmental Credentials



Code for Sustainable Homes

The following Code for Sustainable Homes credits are obtainable as a result of incorporating **HEXATHERM®** into the construction detailed.

Pol 1	
HEXATHERM XPS boards⁽¹⁾	
GWP value	<5
Code credits	1

Mat 1	
Element N°	820100010
Green Guide rating	C
Code credits	0.5

Note. Pol.1 Code credits have an approximate weighted value of 0.7

Note. Mat.1 Code credits have an approximate weighted value of 0.3