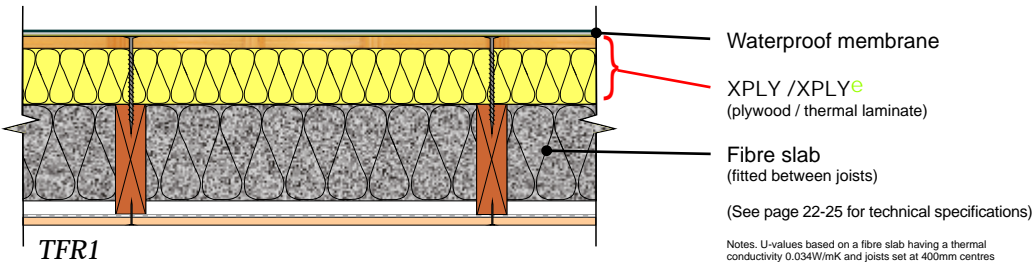


# Flat roof: Timber

## Timber Flat Roof

Plywood/thermal laminate roof board  
Fibre slab fitted between joists



Thickness of fibre slab between joists	Typical thickness of XPLY <sup>e</sup> req'd (mm)			
	42 mm	62 mm	92 mm	112 mm
100mm	0.24	0.21	0.18	0.16
150mm	0.18	0.16	0.14	0.13
200mm	0.14	0.13	0.12	0.11
U-value (W/m <sup>2</sup> K) <small>Calculated in accordance with ISO 6946: 1997</small>				

Pol 1		
	XPLY <sup>e</sup>	XPLY
GWP value	<5	≥5
Code credits	1	0

Note: Pol1 Code credits have an approximate weighted value of 0.7