

# Magply

## RENDER SUBSTRATE INSTALATION GUIDANCE

**TIMBER FRAME SUBSTRATE**  
**SHEATHING BOARD**  
**BREATHER MEMBRANE**  
**25 X 50 TREATED BATTEN**  
**60 MM DPC STRIP TO FACE OF BATTEN**  
**12MM MAGPLY**  
**RENDER BASE COAT & MESH**  
**RENDER PRIMER**  
**RENDER TOPCOAT**

**NOTE**

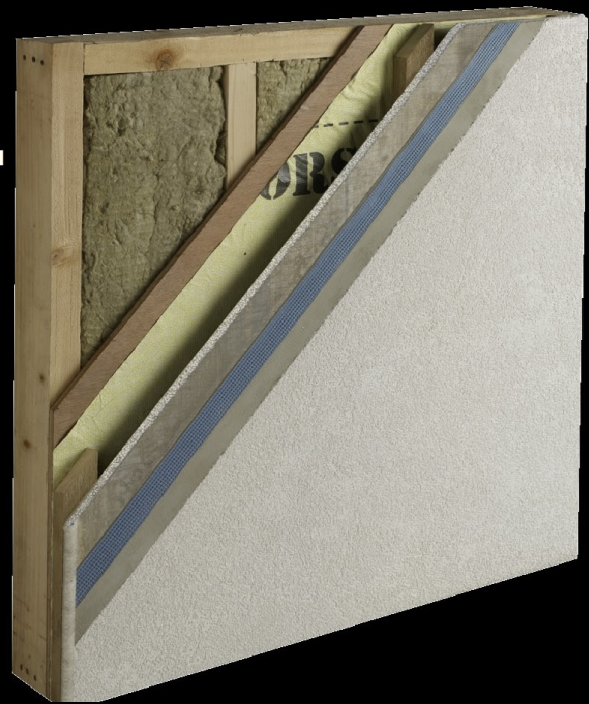
**IN WINTER CONDITIONS BOARD MUST BE BELOW 16% MOISTURE BEFORE APPLYING RENDER TO THE MAGPLY SUBSTRATE BOARD**

**MAGPLY BOARD MUST BE BRUSHED AND FREE OF ALL DEBRIS BEFORE APPLYING RENDER**

**NO PVA BASED PRIMERS CAN BE USED ON MAGPLY BOARD**

**THE DESIGNER OR ARCHITECT SHOULD ALLOW FOR MOVEMENT AND ALLOW FOR EXPANSION JOINTS WHERE REQUIRED**

**IT IS RECOMMENDED TO INSERT A DEFLECTION BEAD ABOVE ALL WINDOWS AND DOORS**



CONSTANT AIR FLOW IN CAVITY



WE ADVISE 60MM OF DPC TO THE FACE OF THE BATTEN BEFORE FITTING THE BOARD

45MM STAINLESS STEEL WOOD SCREWS FIXED AT 300MM CENTRES 10-15MM IN FROM THE BOARD EDGE



150MM SCREW CENTRES AROUND DOORS AND WINDOWS AND ON THE PERIMETER OF THE BOARD



BOARD MUST FINISH AT LEAST 150MM ABOVE GROUND

CONSTANT AIR FLOW IN CAVITY



BOARD MUST FINISH AT LEAST 150MM ABOVE GROUND LEVEL  
 INSECT MESH IF USED MUST BE CLEAR OF DEBRIS  
 CAVITY MUST BE CLEAR TOP TO BOTTOM WITH NO HORIZONTAL TIMBERS

5MM EXPANSION GAP ON ALL BOARD JOINTS

