

# isocheck™

## Isomat 7 Low Deflection System



Recyclable post-use

### OVERLAY PLATFORM SYSTEM DIRECT TO FLOORBOARDS

- New build
- Refurbishments
- Conversions
- Listed buildings requiring minimal structural change



Taking the *mystery* out of Acoustics

#### DESCRIPTION

- ❑ The Isocheck Isomat 7 is a low deflection underboard treatment to reduce sound transmission through traditional timber joisted timber floors.
- ❑ Isocheck Isomat 7 consists of a 6mm layer of Isofiba bonded to performance enhancing barrier membrane. This membrane is placed surface up to receive t&g 9mm, 18mm or 22mm chipboard, OSB, MDF or Plywood.
- ❑ When installed as part of a complete sound reduction system, it enables a timber floor to meet the sound transmission regulations of Approved Document E 2003 and subsequent amendments in 2004, 2010, 2013 and 2015.

#### APPLICATIONS

- ❑ To be used over existing floorboards for new build, refurbishments, conversions or listed buildings requiring minimal structural change with an Isoblock and Isobar ceiling system.



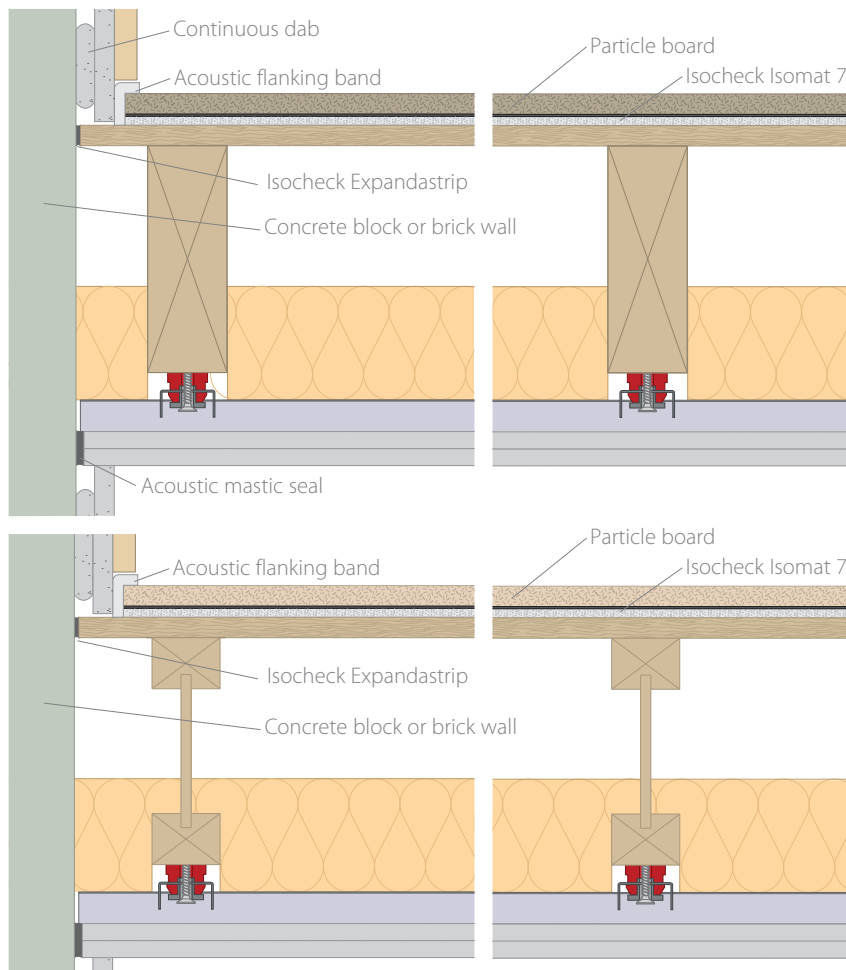
## Product data

Overall size:	1200mm x 1000mm x 7mm tile
Resilient layer:	5.5mm Isofiba
Weight:	2.5kg per tile

## Typical performance expectations (on the constructions illustrated)

Treated floor with:	Airborne		Impact	
	$R_w + C_{tr}$	$D_{nT,w} + C_{tr}$	$L'_{nw}$	$L'_{nT,w}$
Isomat 7 + 22mm t&g floor	<b>59dB</b>	<b>52dB</b>	<b>45dB</b>	<b>52dB</b>
Isomat 7 + 18mm t&g floor	<b>58dB</b>	<b>51dB</b>	<b>45dB</b>	<b>52dB</b>
Isomat 7 + 9mm t&g floor	<b>56dB</b>	<b>49dB</b>	<b>43dB</b>	<b>50dB</b>

Site results (in red) for Building Control approval. Laboratory results (in blue) for comparison.\*



- ❑ Isocheck Isomat 7 under t&g particle board panels and over floorboards.
- ❑ Min. 200mm x 70mm joists @ 450mm centres with min. 100mm 45kg/m<sup>3</sup> insulation between joists.
- ❑ Isoblock and Isobar system fitted to joists at max. 600mm centres and 150mm from edges.
- ❑ Min. 20kg/m<sup>2</sup> double boarded 25mm o/a plasterboard.

Every effort has been taken in the preparation of this sheet to ensure the accuracy of representations contained herein. Recommendations as to the use of materials, construction details and methods of installation are given in good faith and relate to typical situations. However, every site has different characteristics and reliance should not be placed upon the foregoing recommendations. Advice can be given as to specific applications of the products, upon request to isomass building products.

\*Laboratory results are predicted to enable a comparison

[www.isomass.co.uk](http://www.isomass.co.uk)

## SPECIFICATION

The acoustic floor shall be:

- ❑ Isocheck Isomat 7 system, supplied by Isomass Ltd.  
Unit 14 Papworth Business Park, Stirling Way, Papworth Everard, Cambridgeshire CB23 3GY and installed in accordance with manufacturer's instructions / recommendations.

## INSTALLATION

- ❑ Apply Isocheck Acoustic Angled Flanking Band against the perimeter wall to ensure the Isomat 7 and board finish are isolated from the wall.
- ❑ Lay Isocheck Isomat 7 over a structural timber sub-floor. Push the Isomat 7 up to the Flanking band and butt-joint all Isomat 7 panels together.
- ❑ Apply the selected t&g flooring. Glue all joints with Isocheck or another appropriate adhesive.
- ❑ Turn down the Flanking Band. Install the skirting and trim off excess Flanking Band.
- ❑ A detailed (project specific) section drawing can be supplied FOC for additional guidance, upon receipt of the existing structural floor and adjacent wall details.

For advice on treatment of services and penetrations, consult our brochure or visit our website. Please ask Isomass for guidance when considering the weight of any new blocks which will be incorporated in a wall directly surrounding a timber separating floor.