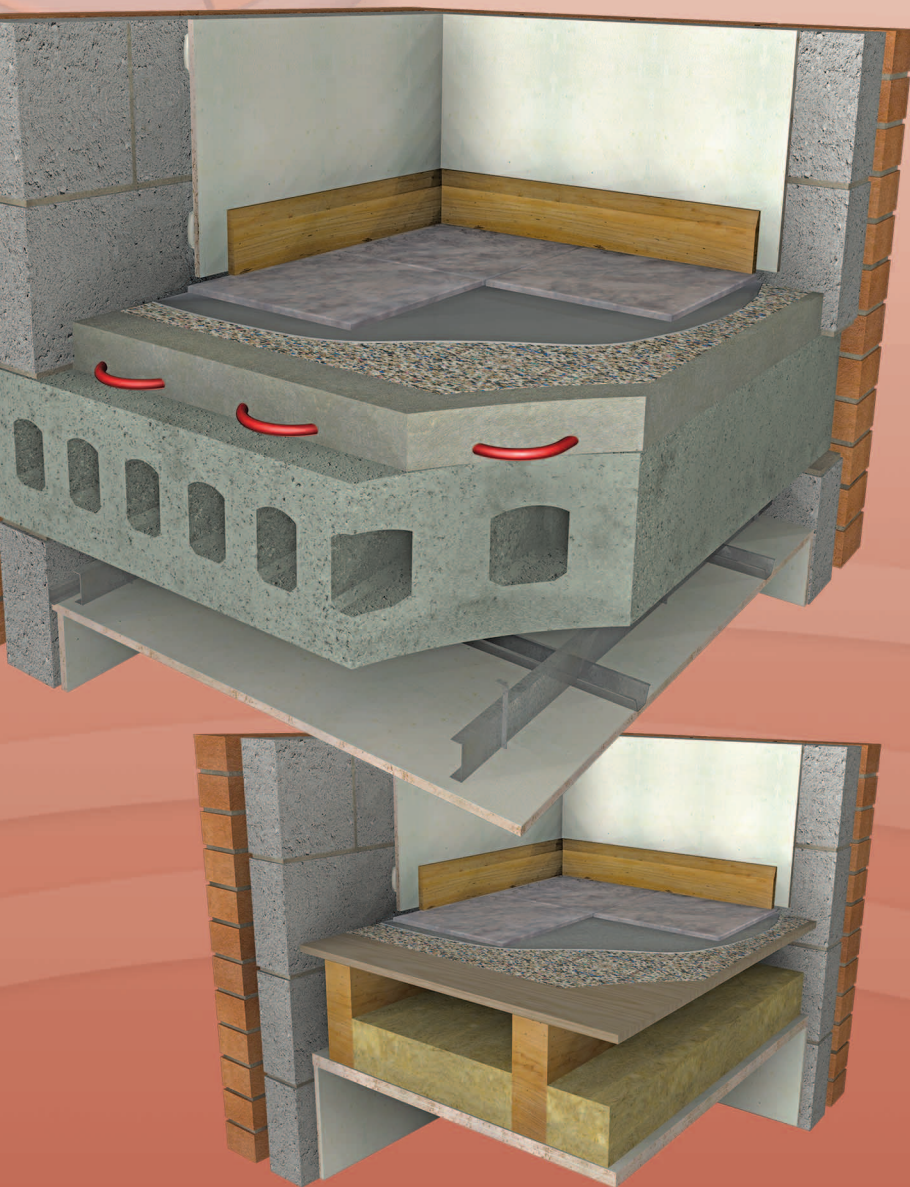


One of the **isomass** systems range

isocheck™

Re-Mat LVT System



18dB IMPACT IMPROVEMENT SYSTEM FOR LVT FLOOR FINISHES ON CONCRETE & TIMBER FLOORS

- New build
- Refurbishment
- Conversion



DESCRIPTION

- ❑ The Re-Mat LVT system is designed to reduce impact sound transmission through concrete and timber floor decks beneath a luxury vinyl tile and similar finishes.
- ❑ Isocheck Re-Mat LVT consists of a 1.6mm layer of matting constructed from cork mixed with waste rubber from the sports shoe industry along with a polymer binder to form an acoustic resilient mat.
- ❑ Isocheck Re-Mat LVT's remarkable 1.6mm thickness ensures a minimal increase in the final finished floor height.

APPLICATIONS

- ❑ Re-Mat LVT is suitable for heavy domestic and general commercial uses in new build, refurbishments and conversion projects.
- ❑ A heated floor system can also be installed beneath Re-Mat LVT.



Taking the *mystery* out of Acoustics

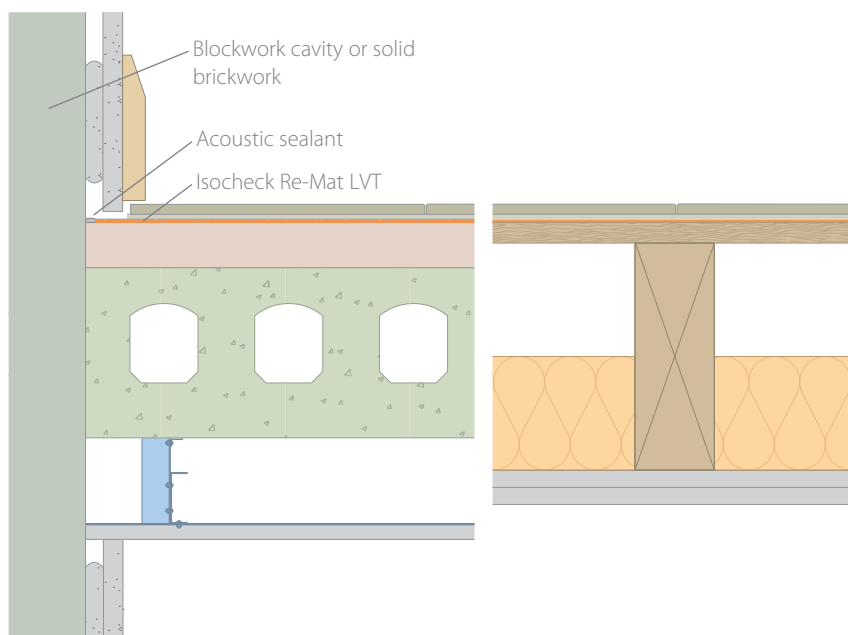
Product data

Roll size:	1m x 15m
Thickness:	1.6mm
Colour:	Multi-coloured
Weight:	1.04kg/m ²
Density:	650kg/m ³
Tensile strength:	>500kPa
Compression:	15%
Operating temperature range:	-30° to 90°

Performance

Isocheck Re-Mat LVT will achieve **18dB** ΔL_w when placed beneath a 2.5mm luxury vinyl tile (LVT) floor finish.

Typical floor upgrade sections



Every effort has been taken in the preparation of this sheet to ensure the accuracy of representations contained herein. Recommendations as to the use of materials, construction details and methods of installation are given in good faith and relate to typical situations. However, every site has different characteristics and reliance should not be placed upon the foregoing recommendations. Advice can be given as to specific applications of the products, upon request to isomass building products.

SPECIFICATION

The acoustic floor shall be:

- Isocheck Re-Mat LVT system, supplied by Isomass Ltd. Unit 14 Papworth Business Park, Stirling Way, Papworth Everard, Cambridgeshire CB23 3GY and installed in accordance with manufacturer's instructions / recommendations.

INSTALLATION

- Ensure the subfloor is clean, dry, level, structurally sound and free from cracks and contamination. The subfloor must be as smooth as possible.
- Any imperfections in timber floors (warping, shrinkage, unevenness) must be made good and all varnish and wax removed to ensure an effective bond.
- Bond Isocheck Re-Mat LVT over the entire subfloor with Isomass LVT Mat Adhesive with all joints butted.
- Roll Isocheck Re-Mat LVT into the adhesive with a 68kg articulated flooring roller to ensure full adhesion to the subfloor.
- Seal perimeters with acoustic sealant to isolate the Re-Mat LVT.
- Full installation instructions are available and must be used in conjunction when laying this floor system.