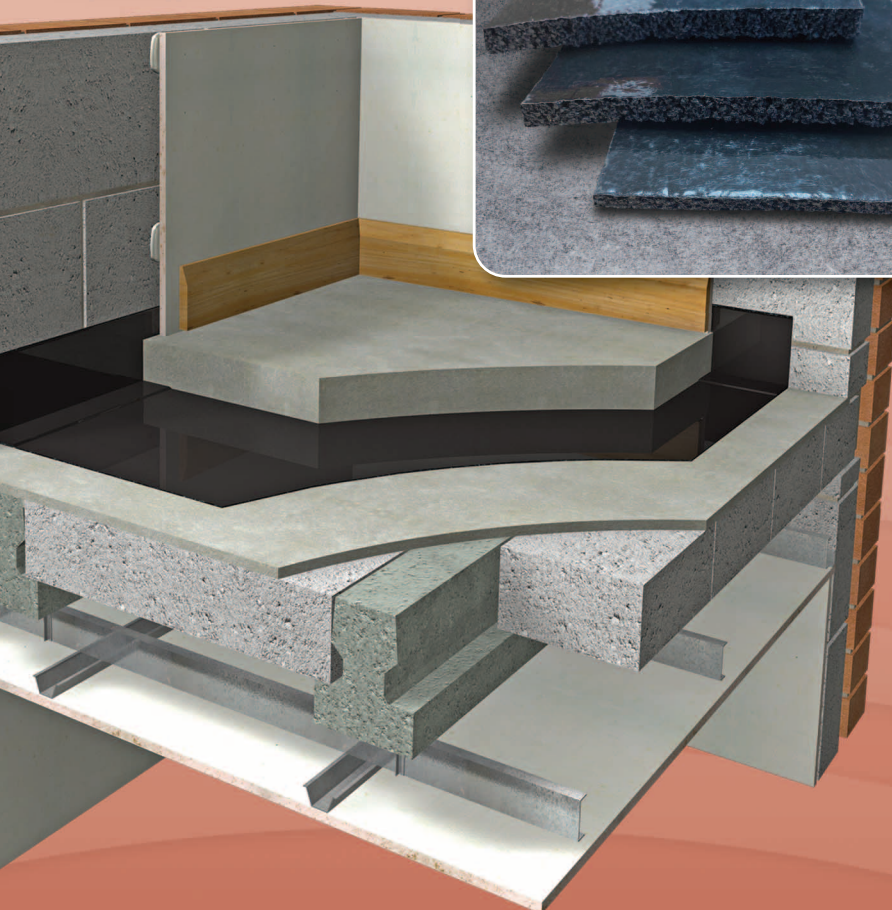
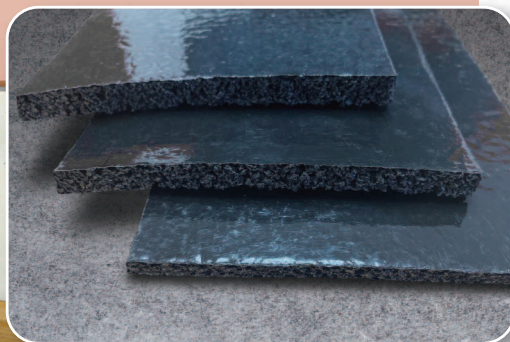


isocheck™

ResiScreed 6, 8 & 10 Systems



UNDER SCREED SYSTEMS FOR ALL TYPES OF CONCRETE FLOORS

- New build
- Refurbishments
- Conversions



DESCRIPTION

- ❑ The Isocheck ResiScreed systems are designed to reduce impact sound transmission through all types of structural concrete floors.
- ❑ Isocheck ResiScreed 6, 8 & 10 comprises a 6mm, 8mm or 10mm a reconstituted rubber crumb layer bonded to a DPM fibreglass backing that has been designed to be placed within a masonry structural floor directly below the screed. This isolates the screed from the structural sub floor, and provide sufficient impact absorption to place it amongst the top performing systems available.
- ❑ By ensuring that all the joints are taped, bridging will be eliminated which is the single greatest cause of failure of any system of this type.
- ❑ Isocheck ResiScreed comes with the backing of a free indemnified design details (that incorporate Isomass products) guaranteed to pass a Part E compliant sound test.

BENEFITS

- ❑ Tested as a single layer.
- ❑ Composition prevents water transmission which can impair acoustic performance.
- ❑ All installations over 250m² come with a free site pre screed inspection.

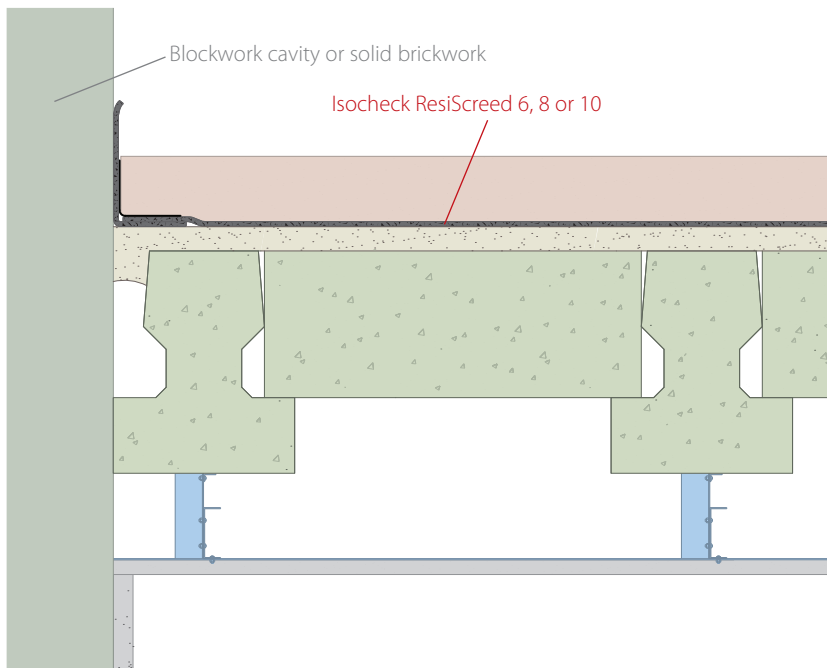


Taking the *mystery* out of Acoustics

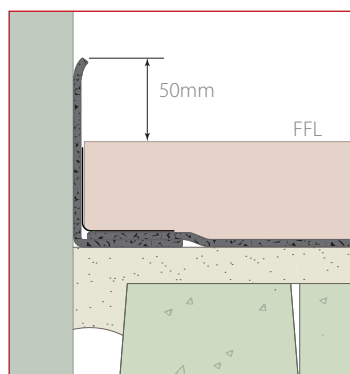
isocheck™
acoustic insulating products

Product data

Dimensions:	ResiScreed 6	1.00m wide x 15m long x 6mm thick rolls
	ResiScreed 8	1.00m wide x 15m long x 8mm thick rolls
	ResiScreed 10	1.00m wide x 15m long x 10mm thick rolls
Composition:	Bonded rubber fibres (80% recycled tyres)	
Density:	365kg/m ³ ±5%	
Compression test: (BS 4098)	73J/m ²	
Thermal conductivity (BS 4745):	1.01 Togs	
Impact Improvement:	25dB Δ L _w	



- ❑ min 80kg/m² - 65mm sand cement screed or 40mm liquid proprietary screed.
- ❑ Optional plastic sheeting - to aid screed pouring and maintain joints in Isocheck ResiScreed 6, 8 or 10.
- ❑ Isocheck ResiScreed 6, 8 or 10.
- ❑ ≥300kg/m² minimum structural beam and block floor with optional levelling screed.
- ❑ 75mm min. void formed by metal frame suspended ceiling system and ≥10kg/m² fire-rated board ceiling.



SPECIFICATION

The acoustic floor shall be:

- ❑ Isocheck ResiScreed 6, 8 or 10, supplied by Isomass Ltd.
Unit 14 Papworth Business Park,
Stirling Way, Papworth Everard,
Cambridgeshire CB23 3GY and
installed in accordance with
manufacturer's instructions /
recommendations.

INSTALLATION

- ❑ The floor surface should be swept free of any loose debris that may damage or bridge the system.
- ❑ Butt joint and seal all roll edges of isocheck ResiScreed 6, 8 or 10. At perimeters overlap ResiScreed 6, 8 or 10 onto a right angle flanking edge strip which should be turned up all vertical surfaces to allow a minimum 50mm to protrude above the intended FFL of the screed.
- ❑ Perimeter overlaps or butt joints should be sealed with a min 100mm wide Isocheck jointing tape.
- ❑ Services that penetrate the screed should be isolated by wrapping with ResiScreed 6, 8 or 10 which again would be taped.
- ❑ When trafficking the floor take care not to perform any unnecessary actions that may cause any of the taped joints to be forced apart.

Every effort has been taken in the preparation of this sheet to ensure the accuracy of representations contained herein. Recommendations as to the use of materials, construction details and methods of installation are given in good faith and relate to typical situations. However, every site has different characteristics and reliance should not be placed upon the foregoing recommendations. Advice can be given as to specific applications of the products, upon request to isomass building products.