

One of the **isomass**
standard systems range

Monodeck™ acoustic insulating boards (17)

monodeck™

20T system



OVERLAY PLATFORM SYSTEM DIRECT TO FLOORBOARDS

- New build
- Refurbishments
- Conversions



DESCRIPTION

- ❑ Monodeck 20T system is designed to reduce transmission through timber floors in situations where finished floor height is critical.
- ❑ Monodeck 20T boards consist of a layer of 8mm reconstituted ACF (Acoustic Chip Foam) bonded to 12mm p5 moisture resistant chipboard.
- ❑ When installed as part of a complete sound reduction system, it enables a timber floor to meet the sound transmission regulations of Approved Document E 2003 and subsequent amendments in 2004, 2010, 2013 & 2015.

APPLICATIONS

- ❑ To be used over existing floorboards for conversions, refurbishments or most decoupled ceilings in new build projects.



Taking the *mystery* out of Acoustics

overlay system direct to floorboards

Product data

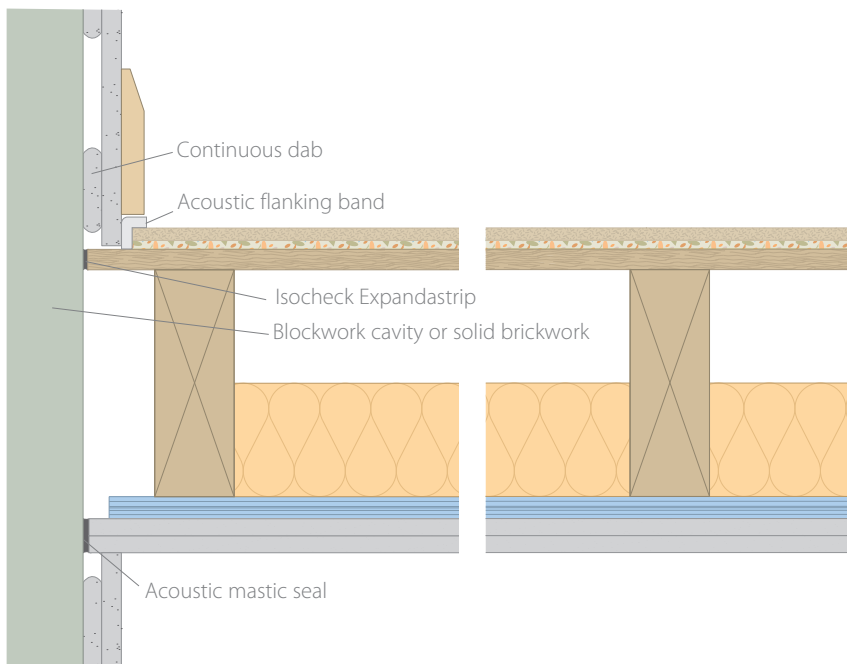
Overall size:	2400mm x 600mm x 20mm
Resilient layer thickness:	8mm
Resilient layer:	Reconstituted ACF (Acoustic Chip Foam)
Resilient layer fire test:	Tested to BS 5852-2:1982
Weight:	11.8kg per sheet

Typical performance expectations

(On the party floors as illustrated below with a joist depth not less than 200mm)

Treated floor with:	Airborne		Impact	
	$R_w + C_{tr}$	$D_{nT,w} + C_{tr}$	L'_{nw}	$L'_{nT,w}$
Monodeck 20T	54dB	48dB	43dB	48dB
		Impact improvement		
		18dB ΔL_w		

Site results (in red) for Building Control approval. Laboratory results (in blue) for comparison.*



- ❑ Monodeck 20T system on existing timber floor (subject to condition) or a new 18mm chipboard deck.
- ❑ 200mm x 50mm timber joists @ max. 450mm centres.
- ❑ 100mm 45kg/m³ insulation between joists.
- ❑ Min. 20kg/m² double boarded ceiling on resilient bars @400mm centres perpendicular to joist direction.
- ❑ Acoustic flanking band reduces impact vibration leaking via structural walls and assists in reducing airborne sound paths.

Every effort has been taken in the preparation of this sheet to ensure the accuracy of representations contained herein. Recommendations as to the use of materials, construction details and methods of installation are given in good faith and relate to typical situations. However, every site has different characteristics and reliance should not be placed upon the foregoing recommendations. Advice can be given as to specific applications of the products, upon request to isomass building products.

*Laboratory results are predicted to enable a comparison

www.isomass.co.uk

SPECIFICATION

The acoustic floor shall be:

- ❑ Monodeck 20T, supplied by Isomass Ltd. Unit 14 Papworth Business Park, Stirling Way, Papworth Everard, Cambridgeshire CB23 3GY and installed in accordance with manufacturer's instructions / recommendations.

INSTALLATION

- ❑ Apply Isocheck Acoustic Angled Flanking Band on the edges of the Isocheck boards just before they are pushed against the perimeter walls to isolate the board from the wall (as shown in the diagrams).
- ❑ Lay Monodeck 20T over existing floor boards in broken bond pattern, applying adhesive to all tongue and grooved panel joints.
- ❑ Install skirting over exposed flanking band and trim off any excess.
- ❑ Full installation instructions are available for download from our website and must be used in conjunction when laying this floor system.

Please ask Isomass for guidance when considering the weight of any new blocks which will be incorporated in a wall directly surrounding a timber separating floor.

**isomass**[®]
building acoustics

Isomass Limited, Unit 14 Papworth Business Park,
Stirling Way, Papworth Everard, Cambridgeshire CB23 3GY

Tel: 0330 175 8228 • Fax: 01223 651 530

Email: info@isomass.co.uk • www.isomass.co.uk