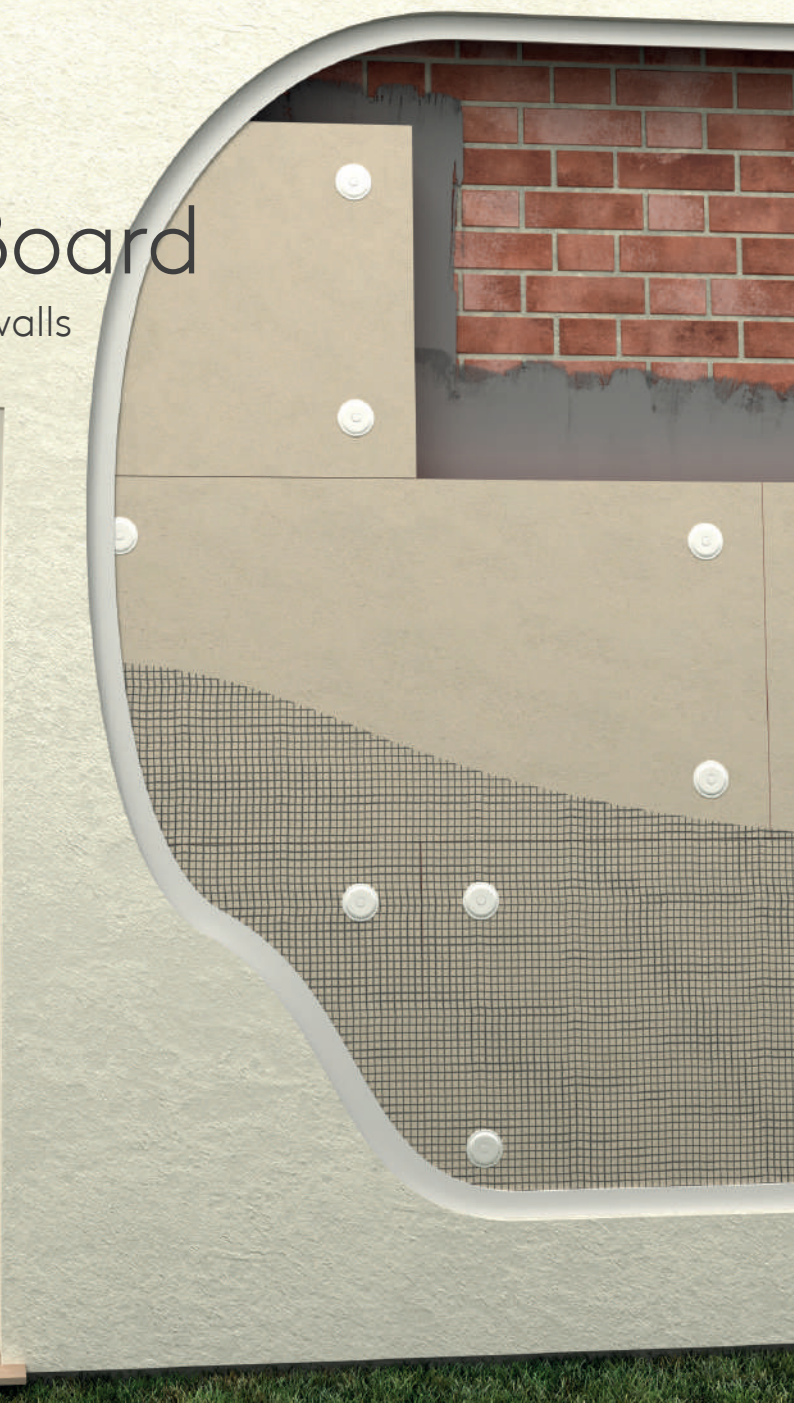


Kooltherm® K5

External Wall Board

External insulation for masonry walls



Contents

Introduction	1
Product details	2
The facings	2
The core	2
Standards & approvals	2
Standard dimensions	2
Compressive strength	2
Resistance to solvents, fungi & rodents	2
Fire performance	3
Thermal properties	3
Typical constructions & U-values	4
Assumptions	4
U-value table key	4
Refurbishment	5
New build	7
Design considerations	8
Linear thermal bridging at junctions	8
Environmental impact & responsible sourcing	10
Sustainability & responsibility	10
Specification clause	10
Product classifications	10
Building Information Modelling (BIM)	10
Water vapour control / condensation	10
Fire stop & cavity barrier strategy	10
Sitework	11
Insulated render systems	11
General	13
About Kingspan Insulation	14
Products & solutions	14
Company details	18
Services	18
Planet Passionate	19

Introduction

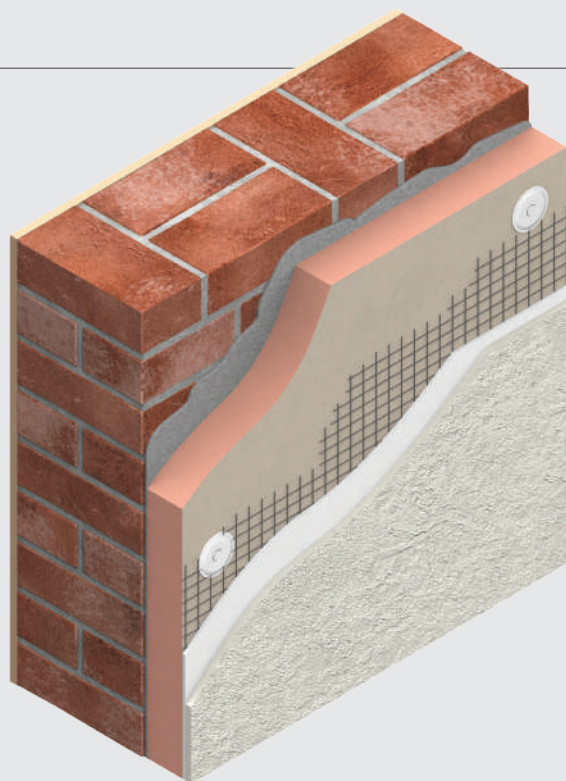
- Premium performance rigid thermoset insulation - thermal conductivities as low as 0.021 W/mK
- Suitable for use behind traditional and lightweight polymer modified renders
- Unaffected by air infiltration
- Resistant to the passage of water vapour
- Ideal for new build and refurbishment



Visit our **free online U-value calculator**.
Offering free, quick and easy calculations
for wall, floor and roof constructions.

[Click here for Great Britain](#)

[Click here for Ireland](#)



Useful links

Website

[Great Britain: Kingspan Kooltherm® K5 webpage](#)

[Ireland: Kingspan Kooltherm® K5 webpage](#)

Declaration of Performance (DoP)

[Kingspan Kooltherm® K5 Declaration of Performance](#)

Safety information

[Kingspan Kooltherm® product safety information](#)

Product details

The facings

Kingspan Kooltherm® K5 is faced on both sides with a glass tissue based facing, autohesively bonded to the insulation core during manufacture.

The core

The core of Kingspan Kooltherm® K5 is a premium performance rigid thermoset fibre-free phenolic insulant.

Standards and approvals

Kingspan Kooltherm® K5 is manufactured under a management system certified to ISO 9001: 2015 (Quality management systems), ISO 14001: 2015 (Environmental management systems), ISO 37301: 2021 (Compliance management systems), ISO 45001: 2018 (Occupational health and safety management systems) and ISO 50001: 2018 (Energy management systems).

Kingspan Kooltherm® K5 is used as an integral component of several BBA / NSAI Agrément Certified rendered external wall insulation systems. For further details of BBA / NSAI Agrément Certification please contact the Kingspan Insulation Technical Service Department (see rear cover for details).

Standard dimensions

Kingspan Kooltherm® K5 is available in the following standard size:

Nominal dimension		Availability
Length	(mm)	1200
Width	(mm)	600
Insulant thickness	(mm)	Refer to local distributor or Kingspan Insulation for current stock and non-stock sizes.

Compressive strength

The declared compressive strength of Kingspan Kooltherm® K5 is 100 kPa when tested to EN 826: 2013 (Thermal insulating products for building applications. Determination of compression behaviour).

Resistance to solvents, fungi & rodents

The insulation core is resistant to short-term contact with petrol and with most dilute acids, alkalis and mineral oils. However, it is recommended that any spills be cleaned off fully before the boards are installed. Ensure that safe methods of cleaning are used, as recommended by suppliers of the spilt liquid. The insulation core is not resistant to some solvent-based bedding compound / adhesive systems, particularly those containing methyl ethyl ketone. Bedding compound / adhesives containing such solvents should not be used in association with this product. Damaged boards or boards that have been in contact with harsh solvents or acids should not be used.

The insulation core and facings used in the manufacture of Kingspan Kooltherm® K5 resist attack by mould and microbial growth and do not provide any food value to vermin.

Product details

Fire performance

There are potential restrictions placed upon this product which vary dependant on building type, height, construction and location. For guidance regarding the routes to compliance for meeting the fire safety requirements of the Building Regulations / Standards, refer to www.kingspaninsulation.co.uk/fireregulations (for GB) or contact technical services at technical@kingspaninsulation.ie (for Ireland).

Kingspan Kooltherm® K5 achieves European Classification (Euroclass) C-s2,d0 when classified to EN 13501-1: 2018 (Fire classification of construction products and building elements. Classification using data from reaction to fire tests).

Please see the table below for further test information, conditions and field of application.

Test report number	EUI-22-SBI-000352 EUI-22-SFB-000352
Classification report number	EUI-22-000352
Product thickness	25 - 100 mm
Substrate	Valid with any substrate except plasterboards, of at least A2-s1, d0 class and 870 ± 50 kg/m ³ density
Joints / edges	Valid for all joints arrangements

Kingspan Kooltherm® K5 is assessed under Assessment and Verification of Constancy of Performance (AVCP) System 1 for Reaction for Fire.

Certificate of Constancy of Performance	1812-CPR-2124
---	---------------

Further details of the fire performance of Kingspan Insulation products may be obtained from the Kingspan Insulation Technical Service Department (see rear cover for details).

Thermal properties

The λ -values and R-values detailed below are quoted in accordance with EN 13166: 2012 + A2: 2016 (Thermal insulation products for buildings. Factory made phenolic foam (PF) products. Specification).

Thermal conductivity

The boards achieve a thermal conductivity (λ -value) of:
0.022 W/mK (insulant thickness 25 - 44 mm)
0.021 W/mK (insulant thickness 45 - 100mm).

Thermal resistance

Thermal resistance (R-value) varies with thickness and is calculated by dividing the thickness of the board (expressed in metres) by its thermal conductivity. The resulting number is rounded down to the nearest 0.05 (m²K/W).

Insulant thickness (mm)	Thermal resistance (m ² K/W)
25	1.10
30	1.35
40	1.80
50	2.35
60	2.85
70	3.30
80	3.80
90	4.25
100	4.75

NB Refer to local distributor or Kingspan Insulation for current stock and non-stock sizes.

Typical constructions & U-values

Assumptions

The U-values in the tables that follow have been calculated using the method detailed in ISO 6946: 2017 (Building components and building elements. Thermal resistance and thermal transmittance. Calculation methods), and using the conventions set out in BR 443 (Conventions for U-value calculations). They are valid for the constructions shown in the details immediately above each table.

For the refurbishment examples, the internal wall finish is taken as 13 mm dense plaster unless stated otherwise. For the new build examples, the internal wall finish is taken to be a 3 mm skim coated 12.5 mm plasterboard on dabs, unless stated otherwise. In all examples, the external wall rendered finish is taken to be a 10 mm polymer render.

NB When calculating U-values to ISO 6946: 2017, the type of mechanical fixing used may change the thickness of insulation required. These calculations assume telescopic tube fasteners with a thermal conductivity of 1.00 W/mK or less, the effect of which is insignificant.

NB For the purposes of these calculations the standard of workmanship has been assumed good, and therefore the correction factor for air gaps has been ignored.

NB The figures below are for guidance only. A detailed U-value calculation and a condensation risk analysis should be completed for each project.

NB If your construction is different from those specified, and / or to gain a comprehensive U-value calculation along with a condensation risk analysis of your project, please consult the Kingspan Insulation Technical Service Department for assistance.

NB There are potential restrictions placed upon this product which vary dependant on building type, height, construction and location. For guidance regarding the routes to compliance for meeting the fire safety requirements of the building regulations / standards, refer to www.kingspaninsulation.co.uk/fireregulations (for GB) or contact technical services at technical@kingspaninsulation.ie (for Ireland).

U-value table key

Further information on the applicable notional and area weighted average limiting U-values is available in the relevant geographical documentation:

- Approved Documents L to the Building Regulations for England
- Approved Documents L to the Building Regulations for Wales
- Technical Handbooks Section 6 to the Building Standards for Scotland
- Technical Guidance Document L (Dwellings) and Technical Guidance Document L (Buildings other than dwellings) to the Building Regulations for the Republic of Ireland.
- Technical Booklets F1 & F2 to the Building Regulations for Northern Ireland

Typical constructions & U-values

Refurbishment

100 mm brick / 50 mm cavity / 100 mm brick wall

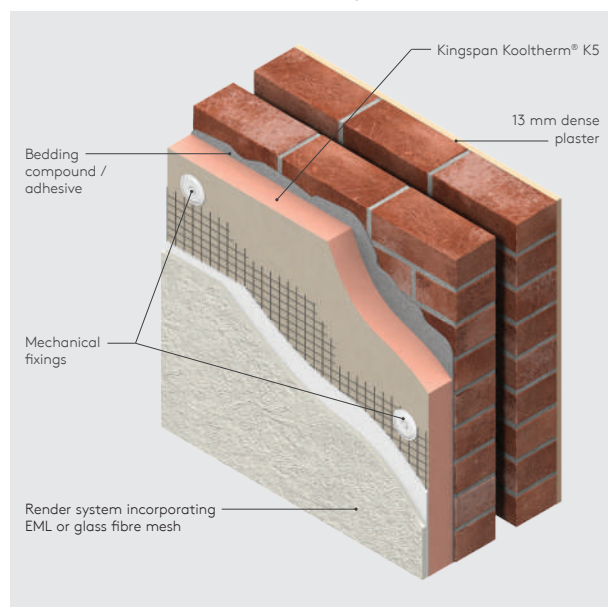


Figure 1

U-values (W/m ² K) for various thicknesses of Kingspan Kooltherm® K5 with 10 mm polymer render	
Insulant thickness (mm)	U-values (W/m ² K)
40	0.39
50	0.32
60	0.28
70	0.24
80	0.22
90	0.20
100	0.17
50 + 60	0.17
60 + 60	0.15
70 + 70	0.14

NB Refer to local distributor or Kingspan Insulation for current stock and non-stock sizes.

Solid brick wall

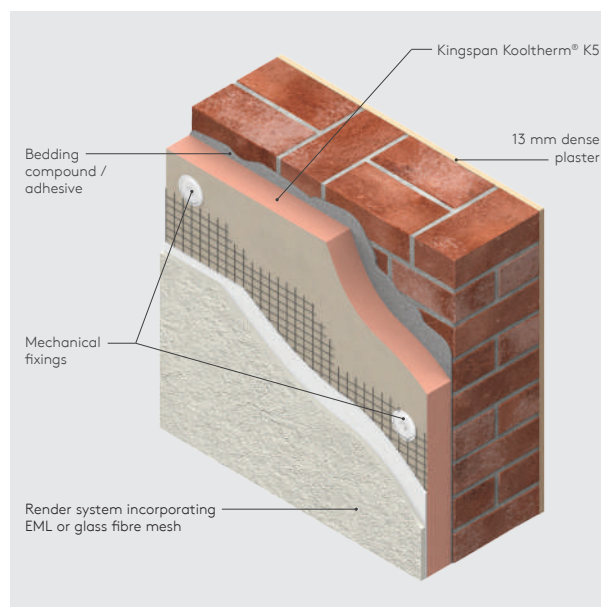


Figure 2

U-values (W/m ² K) for various thicknesses of Kingspan Kooltherm® K5 on different thicknesses of brickwork with 10 mm polymer render		
Insulant thickness (mm)	Brickwork thickness (mm)	
	102.5	215
40	0.45	0.42
50	0.36	0.34
60	0.31	0.29
70	0.27	0.26
80	0.24	0.23
90	0.21	0.21
100	0.19	0.19
50 + 60	0.18	0.17
60 + 60	0.16	0.16
70 + 70	0.14	0.14

NB Refer to local distributor or Kingspan Insulation for current stock and non-stock sizes.

Typical constructions & U-values

102.5 mm brick / 50 mm cavity / 100 mm block wall

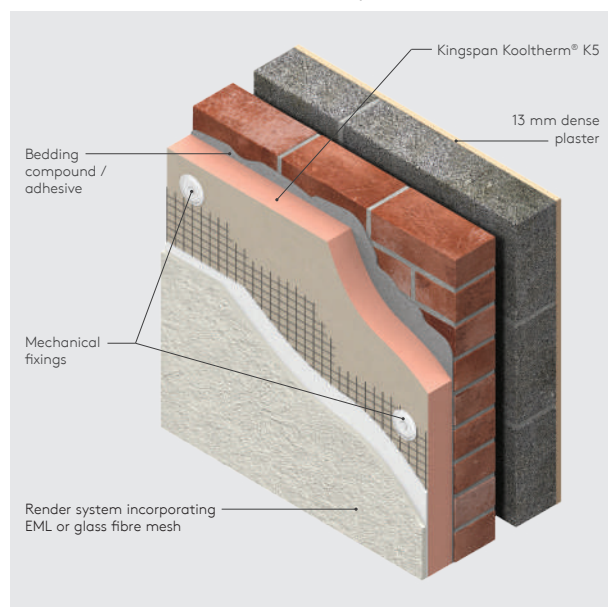


Figure 3

U-values (W/m ² K) for various thicknesses of Kingspan Kooltherm® K5 with 10 mm polymer render				
Insulant thickness (mm)	Inner leaf blockwork density and λ -value (W/mK)			
	Dense (1.13)	Medium (0.51)	Lightweight (0.15)*	Aerated (0.11)*
40	0.44	0.38	0.33	0.32
50	0.33	0.32	0.28	0.27
60	0.28	0.27	0.25	0.24
70	0.25	0.24	0.22	0.21
80	0.22	0.22	0.20	0.19
90	0.20	0.20	0.18	0.18
100	0.18	0.18	0.17	0.16
50 + 60	0.17	0.17	0.16	0.15
60 + 60	0.16	0.15	0.15	0.14
70 + 70	0.14	0.13	0.13	0.12

* A 6.6% thermal bridging factor has been assumed for the effect of mortar joints.
NB Refer to local distributor or Kingspan Insulation for current stock and non-stock sizes.

Refurbishment

100 mm dense block* / 50 mm cavity / 100 mm dense block* wall (original render removed)

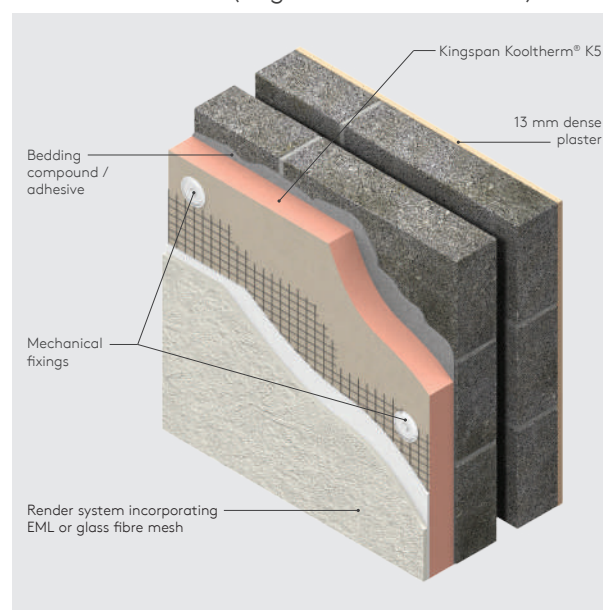


Figure 4

U-values for various thicknesses of Kingspan Kooltherm® K5 with 10 mm polymer render	
Insulant thickness (mm)	U-values (W/m ² K)
40	0.41
50	0.33
60	0.29
70	0.25
80	0.22
90	0.20
100	0.18
50 + 60	0.17
60 + 60	0.16
70 + 70	0.14

* Calculations assume dense block of λ -value 1.13 W/mK.
NB Refer to local distributor or Kingspan Insulation for current stock and non-stock sizes.

Typical constructions & U-values

New build

215 mm solid blockwork wall

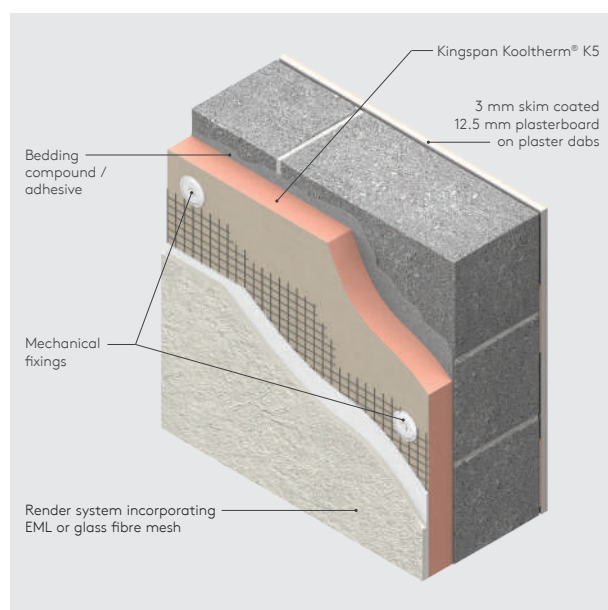


Figure 5

U-values (W/m ² K) for various thicknesses of Kingspan Kooltherm® K5 with 10 mm polymer render					
Insulant thickness (mm)	Blockwork density and λ -value (W/mK)				
	Dense (1.13)	Medium (0.51)	Light-weight (0.15)*	Aerated (0.11)*	Thin joint aerated (0.11)**
40	0.40	0.37	0.29	0.26	0.24
50	0.33	0.31	0.25	0.23	0.21
60	0.28	0.27	0.22	0.20	0.19
70	0.25	0.23	0.20	0.19	0.18
80	0.22	0.21	0.18	0.17	0.16
90	0.20	0.19	0.17	0.16	0.15
100	0.18	0.18	0.15	0.15	0.14
50 + 60	0.17	0.16	0.14	0.14	0.13
60 + 60	0.16	0.15	0.13	0.13	0.12
70 + 70	0.14	0.13	0.12	0.11	0.11

* A 6.6% thermal bridging factor has been assumed for the effect of mortar joints.

** A 1.4% thermal bridging factor has been assumed for the effect of mortar joints.

NB Refer to local distributor or Kingspan Insulation for current stock and non-stock sizes.

100 mm dense block* outer leaf / 50 mm cavity / 100 mm block inner leaf

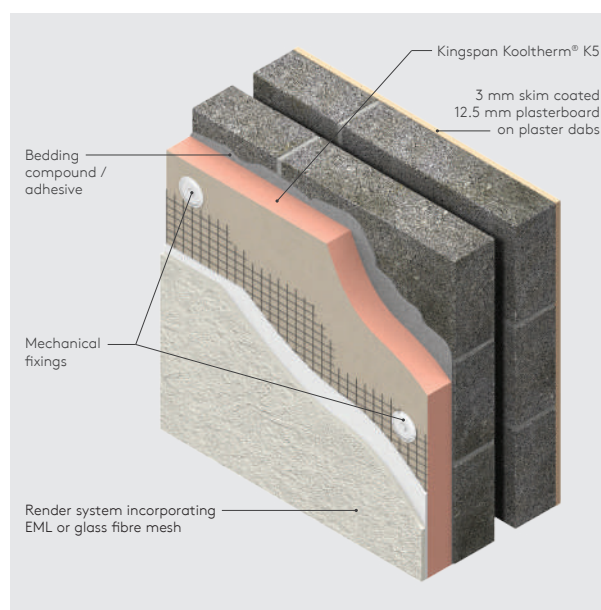


Figure 6

U-values (W/m ² K) for various thicknesses of Kingspan Kooltherm® K5 with 10 mm polymer render					
Insulant thickness (mm)	Inner leaf blockwork density and λ -value (W/mK)				
	Dense (1.13)	Medium (0.51)	Light-weight (0.15)**	Aerated (0.11)**	Thin Joint Aerated (0.11)***
40	0.38	0.36	0.32	0.30	0.29
50	0.31	0.30	0.27	0.26	0.25
60	0.27	0.26	0.24	0.23	0.22
70	0.24	0.23	0.22	0.21	0.20
80	0.22	0.21	0.20	0.19	0.18
90	0.20	0.19	0.18	0.17	0.17
100	0.18	0.18	0.16	0.16	0.16
50 + 60	0.16	0.16	0.15	0.15	0.15
60 + 60	0.15	0.15	0.14	0.14	0.14
70 + 70	0.13	0.13	0.12	0.12	0.12

* Calculations assume dense block of λ -value 1.13 W/mK

** A 6.6% thermal bridging factor has been assumed for the effect of mortar joints.

*** A 1.4% thermal bridging factor has been assumed for the effect of mortar joints.

NB Refer to local distributor or Kingspan Insulation for current stock and non-stock sizes.

Design considerations

Linear thermal bridging at junctions

Basic principles

Linear thermal bridging describes the heat loss / gain that occurs at junctions between elements e.g. where an external wall meets the roof, or at junctions around openings in the building fabric where thermal insulation is discontinuous e.g. sills, jambs and lintels.

Interruptions within the insulation by materials with poorer insulating properties can result in a thermal bridge, which can lead to problems of condensation and mould growth, especially if there is a drop in surface temperature.

The heat flow at these junctions and opening locations, over and above that through the adjoining plane elements is the linear thermal transmittance of the thermal bridge: measured in W/mK ; referred to as a 'psi-value'; and expressed as a ψ -value.

The lower the ψ -value, the better the performance. ψ -values are taken into account in the calculation methodologies e.g. the Standard Assessment Procedure (SAP) that are used to assess the operational CO_2 emissions and, where applicable, the fabric energy efficiency of buildings, primary energy or delivered energy rates. ψ -values can comprise either, or a combination of, calculated and assumed values.

Existing building junction losses are not typically accounted for in whole building heat loss calculations and only the risks of surface condensation and mould growth are considered.

Reducing linear thermal bridging

Heat typically flows through the easiest path. For a wall insulated with Kingspan Kooltherm® K5 the main linear thermal bridges are the reveals, the junction between the walls and the roof, and where the external wall and ground floor meet.

Whilst there are some industry designed details available for External Wall Insulation (EWI), they are largely targeted at new build constructions. However, they are also considered good practice for refurbishment.

Detailing at junctions to minimise the effects of thermal bridging and the associated risk of condensation or mould growth is important and there are some simple design considerations that can be adopted when insulating to help mitigate the risks and to reduce heat loss.

Detailing at junctions to minimise the effects of thermal bridging and the associated risk of condensation or mould growth is important and there are some simple design considerations that can be adopted when insulating to help mitigate the risks and to reduce heat loss.

Continuity of insulation is the best approach to limit losses through junctions. Failing continuity, overlap of insulation layers and use of lower conductivity materials represents a good practice approach. However, where neither option is possible, the risk of condensation will require particular consideration in determining an appropriate approach. Details and designs should be considered in the context of the property, its construction, characteristics, condition and ventilation provisions.

where insulating externally or sheathing a frame construction, there are some simple design considerations that can be adopted to help reduce heat losses.

- The reveal linear thermal bridge can be avoided either by positioning the window frame so that its outer face is flush with the outer surface of the masonry wall, and overlapping the window frame with the external wall insulation. Or, if this is not possible, the linear thermal bridge can be reduced by insulating the reveal at jambs, head and sill. The key factor is the thermal resistance (R-value) of this insulation layer.
- Reveals should be designed to accommodate the 25 mm of Kingspan Kooltherm® K5 required to achieve a minimal thermal resistance of $0.6 m^2K/W$, and the depth of the cladding system (see Figure 7).

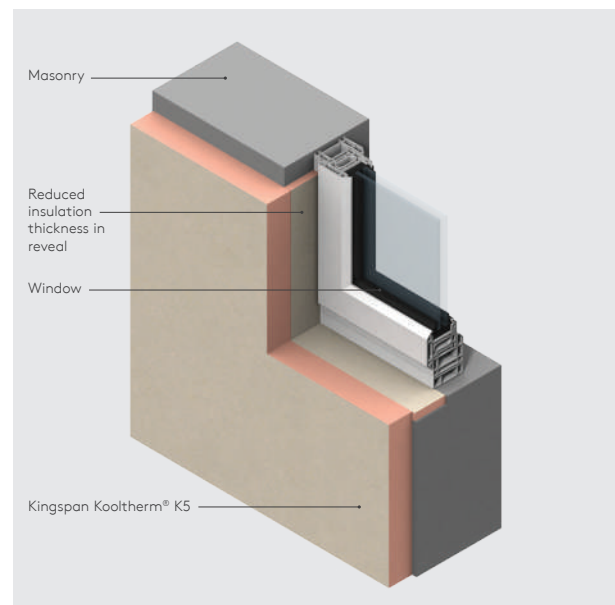


Figure 7

Design considerations

- Heat loss through reveal junctions can also be reduced by internally accommodating 37.5 mm (min.) of Kingspan Kooltherm® K118 Insulated Plasterboard (in Great Britain) or Kingspan Kooltherm® K18 Insulated Plasterboard (in Ireland) around the openings.
- Where existing windows or doors are not replaced as part of renovation works, design and detailing should consider the potential for future replacement works.
- At ground floor junctions where Kingspan Kooltherm® K5 is used on an existing substrate, good practice is to extend the insulation below the starter rail as an insulated plinth to ground level (for example using Kingspan GreenGuard® GG301 Upstand board). Best practice would be to excavate and extend the external insulation below ground level by at least 300 mm below finished floor level to increase the heat flow path and reduce junction losses. A starter rail / track formed from a low conductivity material can also help to reduce losses through this junction.
- For a new build construction, where Kingspan Kooltherm® K5 is used to sheath a frame construction at the edge of ground floors, the distance between the top surface of the floor insulation or perimeter insulation upstand, and the bottom of the wall insulation must be a minimum of 150 / 225* mm for a concrete floor and 200 mm for a suspended timber floor. The further appropriate wall insulation extends past the floor insulation, the better the thermal performance of the junction between the wall and the floor will be.
- At junctions with roofs, the required thickness of Kingspan Kooltherm® K5 may be accommodated within the existing eaves and gables overhang. This can avoid the necessity of either a step out from the eaves at the wall insulation, or for extending the roof eaves or verge over the external wall insulation system. Loft insulation should overhang the externally applied insulation layer effectively to avoid a significant thermal bridge occurring. Best practice where the overhang is insufficient to accommodate Kingspan Kooltherm® K5 should be to extend the existing roof and to maintain continuity of insulation between the roof and walls.
- Best practice should be to reposition existing rainwater guttering and downpipes, maintaining continuity of insulation (and reducing losses from the junction) whilst also increasing robustness at interfaces to reduce the risk of water entering and damaging the Kingspan Kooltherm® K5.
- It is also important to consider other obstructions to the continuity of insulation, such as meter boxes, satellite dishes, flues, ventilation ducts and grilles, and gas and mains water connections. Best practice should be for these to be removed and re-fixed to the surface of the external wall finish to ensure continuity of insulation by appropriate persons/agencies.
- There will be instances where separation from flues / air ducts and combustible material is required and appropriate instructions and guidance should be sought and followed where applicable.

* 150 mm applies to the UK and 225 mm to the Republic of Ireland.

For further advice on details to reduce linear thermal bridging please contact the Kingspan Insulation Technical Service Department (see rear cover for details).

Design considerations

Environmental impact & responsible sourcing

Environmental Product Declaration

An Environmental Product Declaration (EPD), certified by BRE Global to the BRE Environmental Profiles 2013 Product Category Rules for Type III environmental product declaration of construction products to EN 15804: 2012 + A1: 2013, has been created for Kingspan Kooltherm® K5 produced at Kingspan Insulation's Castleblayney, Co. Monaghan manufacturing facility.

Responsible sourcing

Kingspan Kooltherm® K5 produced at Kingspan Insulation's Castleblayney, Co. Monaghan manufacturing facility is certified to BES 6001 (Framework Standard for the Responsible Sourcing of Construction Products) 'Good'.



To download the EPD or certification please visit our [website](#).

Sustainability & responsibility

Kingspan Insulation has a long-term commitment to sustainability and responsibility: as a manufacturer and supplier of insulation products; as an employer; as a substantial landholder; and as a key member of its neighbouring communities.

A report covering the sustainability and responsibility of Kingspan Insulation Ltd's British operations at its Pembridge, Herefordshire and Selby, North Yorkshire manufacturing facilities is available upon request from literature@kingspaninsulation.co.uk.

Specification clause

Kingspan Kooltherm® K5 should be described in specifications as:

The external wall insulation shall be Kingspan Kooltherm® K5 External Wall Board ____ mm thick: comprising a premium performance rigid thermoset fibre-free phenolic insulation core on both sides with a glass tissue based facing. The product shall be manufactured under a management system certified to ISO 9001: 2015, ISO 14001: 2015, ISO 37301: 2021, ISO 45001: 2018 and ISO 50001: 2018; by Kingspan Insulation Limited; and installed in accordance with the instructions issued by them.

Product classifications

Uniclass UK

Pr_25_71_63_59 Phenolic foam boards
Pr_80_77_76_62 Phenolic foam insulation

CAWS

M21 20, M21 210, M21 220, M21 230 (Standard and Intermediate) M21 20 (Minor works)

Details also available on [NBS Source](#).

Building Information Modelling (BIM)

BIM objects for Kingspan Kooltherm® K5 can be downloaded using the Kingspan BIM Designer Software Tool available at www.kingspaninsulation.co.uk/k5.

Water vapour control / condensation

Consideration should be given to the risk of condensation, when designing thermal elements.

A condensation risk analysis should be carried out following the procedures set out in BS 5250: 2021 (Management of moisture in buildings. Code of practice). The Kingspan Insulation Technical Service Department (see rear cover for details) can provide this service.

Fire stop & cavity barrier strategy

Current guidance to the Building Regulations / Standards should be considered with regard to the performance requirements for, and the provision of fire stops and cavity barriers.

Sitework

Insulated render systems

- The installation guidance for Kingspan Kooltherm® K5 outlined in this section must only be followed after considering the below.
- There are potential restrictions placed upon this product which vary dependant on building type, height, construction and location. For guidance regarding the routes to compliance for meeting the fire safety requirements of the Building Regulations / Standards, refer to www.kingspaninsulation.co.uk/fireregulations (for GB) or contact technical services at technical@kingspaninsulation.ie (for Ireland).
- Because insulated render systems are proprietary and utilise different mechanisms for attaching insulation to the wall structure, sitework guidance should always be sought from the render system manufacturer. However, in the absence of any other guidance, the instructions laid out below may be followed.
- The external masonry wall should be clean, flat, and free from protrusions.
- Where an uneven surface remains, it is recommended that a bedding compound can be applied prior to securing the insulation boards in place.
- External wall insulation should start a suitable distance below the top surface of the ground floor insulation / perimeter insulation upstand (whichever is higher) and align with the requirement of the respective accredited construction details.
- Insulation boards should be installed break-bonded, with joints lightly butted.
- Insulation boards are to be restrained to the substrate with bedding compound / adhesive and mechanical fixings when the system is to be fixed to a new or existing building.
- Care should be taken to install the specified thickness of insulation around reveals (see Figure 7).
- Insulation boards of Kingspan Kooltherm® K5 are mechanically fixed to the exterior of masonry external walls, preferably using thermally broken telescopic tube fasteners.

- A minimum of 5 fixings are required to secure an insulation board to the masonry wall.
- Board edges at openings and external corners should be fixed with fasteners at maximum 300 mm centres.
- Fasteners at board edges must be located > 50 mm, and < 150 mm, from edges and corners of the board, and not overlap board joints.
- The requirement for additional fixings is dependent on the render system being applied and the type of fixing being used.

For details on fixings refer to:

Ejot UK Limited +44 (0) 1977 687 040
www.ejot.co.uk

Helifix Limited +44 (0) 2087 355 222
www.helifix.co.uk

MAK Fasteners +353 (0) 1 451 99 00
www.makfasteners.com

SFS Intec +44 (0) 1132 085 500
www.sfsintec.biz/uk

Wallfast Limited +44 (0) 2392 298 443
www.wallfast.co.uk

Sitework

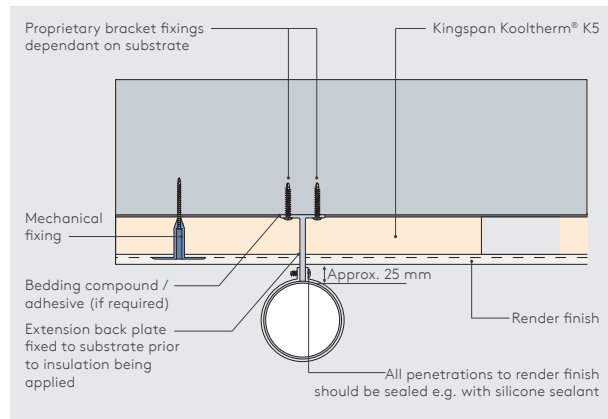


Figure 8 - Drainpipe extension detail (applicable to a variety of external building ancillaries)

- Base cementitious render application should be in two coats, incorporating a scrim reinforcement layer between them, then completed with a finishing coat. All render coats should be strictly applied in accordance with the system suppliers accreditation and their current application guidance, paying particular attention to thickness and cure times between layers.
- Minimum total render thicknesses should average 8 mm and not drop below 6 mm at any point.
- In refurbishment projects, sill extenders and flashings should be used around openings, with care taken to avoid cold bridging (see Figure 9).

For best practice and guidance please refer to the European Association for External Thermal Insulation Composite System (EAE).

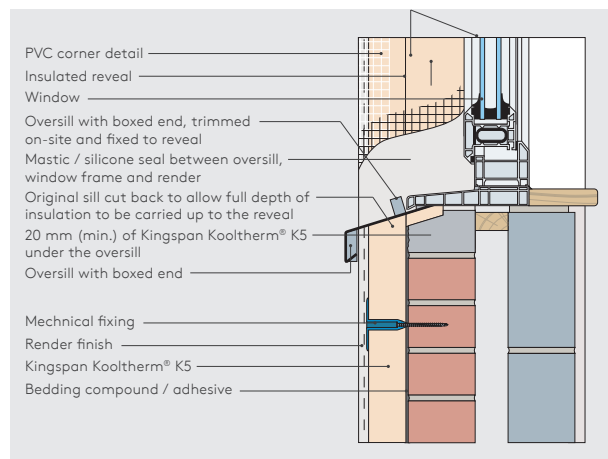


Figure 9 - Overall extension detail (refurbishment)

- Wherever possible, care should be taken to avoid cold bridging when attaching services and ancillaries to the exterior of the building (see Figure 8).
- Depending on the render finish being applied, advice must be sought from the render manufacturer on the EML / glass fibre mesh and bedding mortar to be applied.

Sitework

General

Cutting

- Cutting should be carried out either by using a fine toothed saw, or by scoring with a sharp knife, snapping the board over a straight edge and then cutting the facing on the other side.
- Ensure accurate trimming to achieve close-butting joints and continuity of insulation.

Daily working practice

- At the completion of each day's work, or whenever work is interrupted for extended periods of time, insulation boards should be protected from inclement weather.

Availability

- Kingspan Kooltherm® K5 is available through specialist insulation distributors and selected builders' merchants throughout the UK and Ireland.

Packaging and storage

- The polyethylene packaging of Kingspan Insulation products, which is recyclable, should not be considered adequate for outdoor protection.
- Ideally, boards should be stored inside a building. If, however, outside storage cannot be avoided, then the boards should be stacked clear of the ground and covered with an opaque polythene sheet or weatherproof tarpaulin. Boards that have been allowed to get wet should not be used.

Health and safety

- Kingspan Insulation products are chemically inert.
- A Safety Information Data Sheet for this product is available from the Kingspan Insulation website www.kingspaninsulation.co.uk/safety or www.kingspaninsulation.ie/safety.

Warning - do not stand on or otherwise support your weight on this product unless it is fully supported by a load bearing surface.

About Kingspan Insulation

Products & solutions

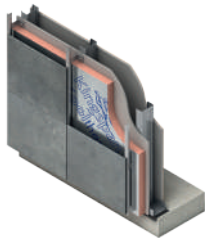
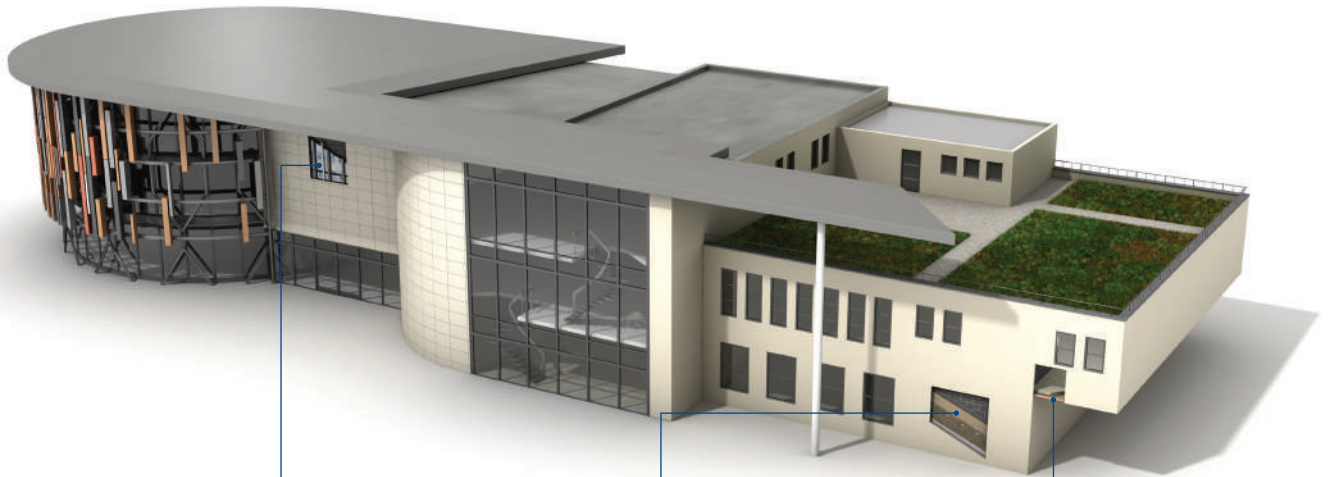
Rigid insulation products for building fabric applications, including roofs, walls and floors.

- Kingspan AlphaCore® – microporous silica-based insulation.
- Kingspan OPTIM-R® – vacuum insulation panel (VIP) systems.
- Kingspan Kooltherm® – phenolic insulation.
- Kingspan Therma™ – PIR insulation.
- K-Roc® – rock mineral fibre insulation.
- Kingspan GreenGuard® – extruded polystyrene insulation (XPS).
- Kingspan Aerobord® – extruded polystyrene (EPS).
- Kingspan TEK® – structural insulated panels (SIPs).
- Cavity closers – PVC-U extrusions with an insulation core.
- Membranes – for pitched roofs and walls.



About Kingspan Insulation

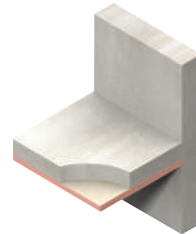
Solutions available for roofs, walls and floors of commercial buildings, from schools to retail.



Insulation for use behind rainscreen or masonry façade systems



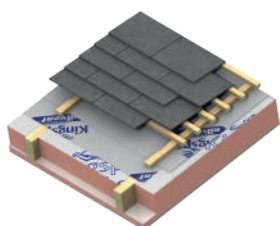
External insulation for masonry walls



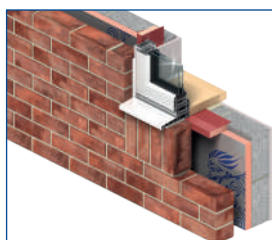
Insulation for structural ceilings (soffits)

About Kingspan Insulation

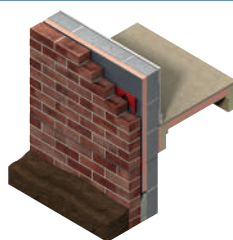
From new housing developments to refurbishing your home, we offer a number of different solutions for roof, wall and floor applications.



Insulation for tiled or slated pitched warm roof spaces

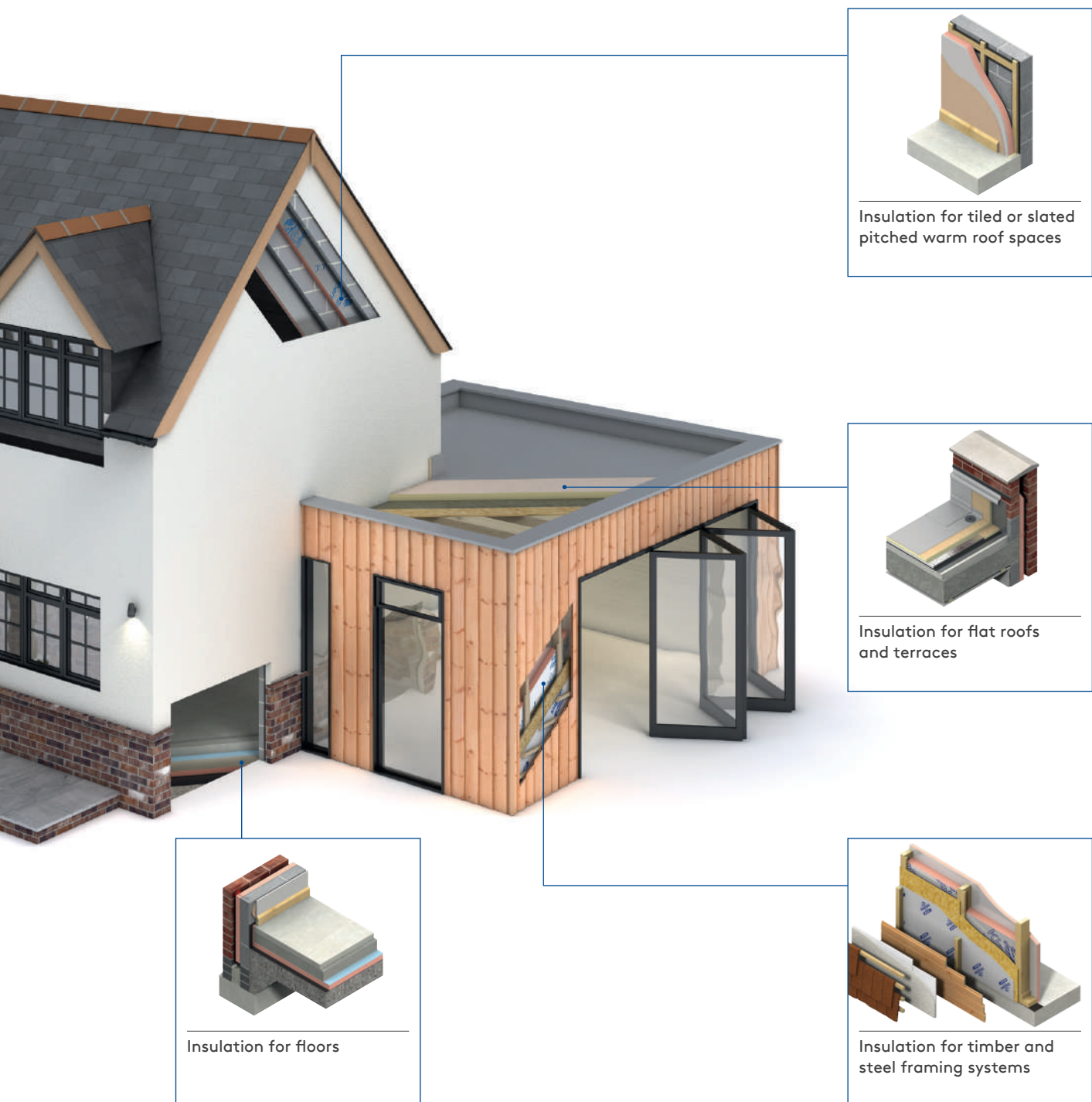


Insulated extrusions for closing wall cavities at openings



Full and partial fill cavity wall insulation





Insulation for tiled or slated pitched warm roof spaces

Insulation for flat roofs and terraces

Insulation for floors

Insulation for timber and steel framing systems

About Kingspan Insulation

Company details

Kingspan Insulation Ltd is part of the Kingspan Group plc., one of Europe's leading construction product manufacturers. The Kingspan Group was formed in the late 1960s and is a publicly quoted group of companies headquartered in Kingscourt, County Cavan, Ireland.



Kingspan Insulation Ltd is a leading manufacturer of rigid insulation products and insulated systems for building fabric and building services applications.

Our GB head office is located in Pembridge, in the heart of rural Herefordshire. Our northern hub is near Selby in North Yorkshire. We also have a site in Castleblayney, Ireland. All three sites are accredited to the independent compliance standard ISO 37301: 2021.



Services

Our support services provide fast and accurate advice no matter what your role is. Visit our website to access the following services.

- U-value calculations – free, quick and easy U-value calculations with our U-value Calculator.
- Help and advice on your projects, including stockists, how to guides, regulatory guidance and e-learning.
- Dedicated Specification and Sales teams to support projects.
- Building Information Modelling (BIM) – download BIM objects for our products.
- Tapered roofing service – Kingspan Insulation's tapered roofing systems come with a supporting design service to ensure the most cost-effective solution for a roof is identified.



- CPDs – Kingspan Insulation offers a number of free CPD seminars for architects and specifiers covering a wide range of industry topics. CPDs can be booked or a range of courses can be found online.
- Product awareness training – build your team's knowledge with on-site training and support with one of our experienced product technicians who cover the full range of Kingspan products and applications, from flooring to roofing and everything in-between with both internal and external wall insulations.





Planet Passionate is our group wide global sustainability programme.

Our Planet Passionate programme aims to have a positive impact on three big global challenges: climate change, circularity and protection of our natural world.



Scan for our latest progress report to learn more about our targets, partnerships and global commitments.



Contact details

Great Britain

Pembridge | Leominster
Herefordshire | HR6 9LA

T: +44 (0) 1544 388 601

E: info@kingspaninsulation.co.uk

www.kingspaninsulation.co.uk

For individual department contact details please visit

www.kingspaninsulation.co.uk/contact



Visit our free online U-value calculator.
Offering free, quick and easy calculations
for wall, floor and roof constructions.

Ireland

Kingspan Insulation Ltd
Castleblayney | County Monaghan

T: +353 (0) 42 979 5000

E: info@kingspaninsulation.ie

www.kingspaninsulation.ie

For individual department contact details please visit

www.kingspaninsulation.ie/contact



Visit our free online U-value calculator.
Offering free, quick and easy calculations
for wall, floor and roof constructions.



For the most up-to-date
version of this brochure
please scan or click [here](#).

To access pre-existing product information or information relating to previously sold/discontinued products please email literature@kingspaninsulation.co.uk.

The information contained in this brochure is believed to be correct at the date of publication. Kingspan Insulation Limited ("Kingspan Insulation") reserves the right to alter or amend the product specifications without notice due to continuous improvement commitments. There may also be relevant changes between publications with regard to legislation, or other developments affecting the accuracy of the information contained in this brochure. Product thicknesses shown in this document should not be taken as being available ex-stock and reference should be made to the current Kingspan Insulation price-list or advice sought from Kingspan Insulation's Customer Service Department. The information, technical details and fixing instructions etc. included in this literature are given in good faith and apply to uses described. Kingspan Insulation does not accept responsibility for issues arising from using products in applications different from those described within this brochure or failure to correctly follow the information or instructions as described within this brochure. Recommendations for use should be verified with a suitable expert or professional for suitability and compliance with actual requirements, specifications and any applicable laws and regulations. For other applications or conditions of use, Kingspan Insulation offers a technical advisory service (see above for contact details), the advice of which should be sought for uses of Kingspan Insulation products that are not specifically described herein. Please check that your copy of this literature is current by contacting the Kingspan Insulation Marketing Department.

© Kingspan, AlphaCore, Kingspan GreenGuard, Kooltherm, K-Roc, OPTIM-R, TEK and the Lion Device are Registered Trademarks of the Kingspan Group plc in the UK, Ireland and other countries. All rights reserved.

TM Therma is a Trademark of the Kingspan Group plc.

Kingspan Insulation Ltd is not associated with, and its products have not necessarily been tested by, the GREENGUARD Environmental Institute.

Registered in England & Wales, No. 01882722. Registered Office: Pembridge, Leominster, Herefordshire HR6 9LA UK. VAT GB428602456.

Registered in Ireland, No. 54621. Registered Office: Bree Industrial Estate, Castleblayney, Co. Monaghan, Ireland. VAT IE4575069I.

