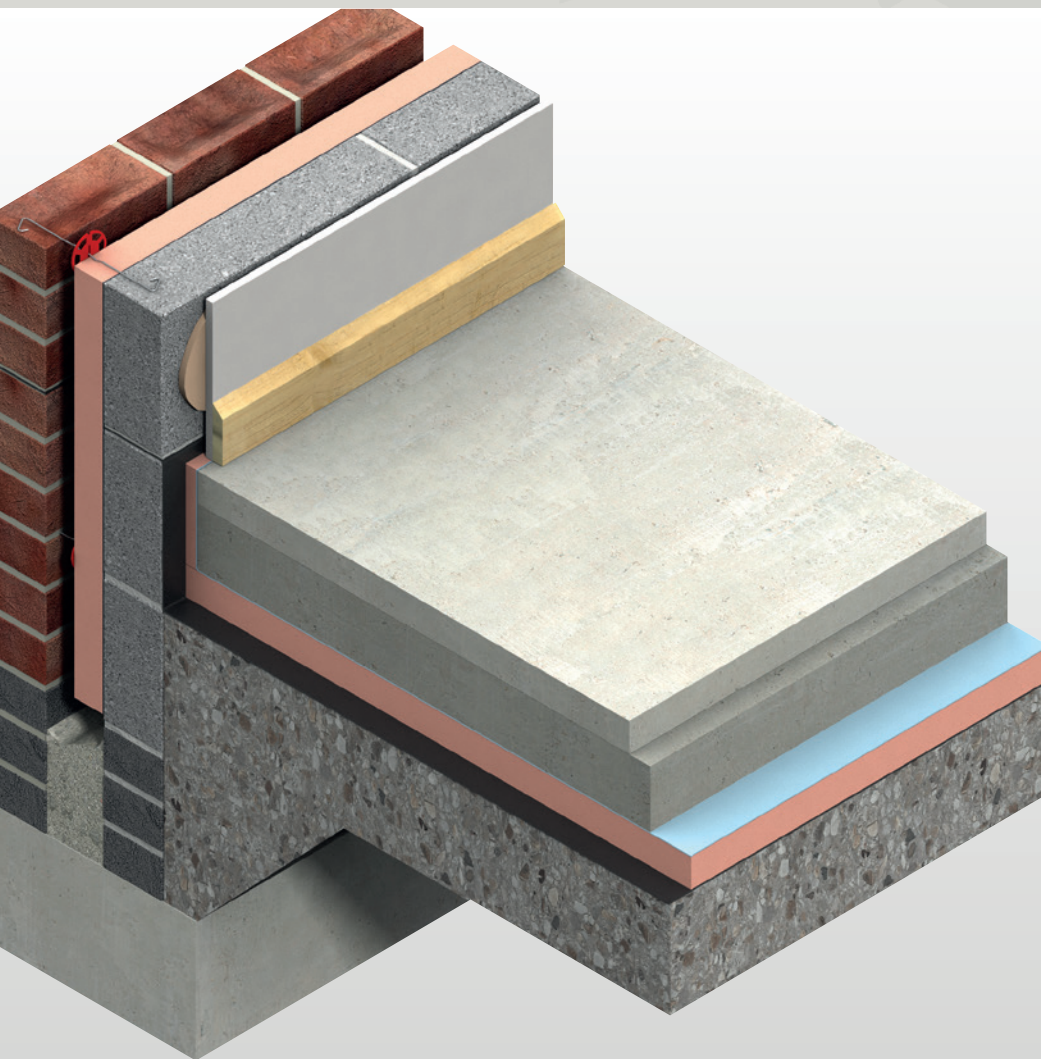




Kooltherm® K103 Floorboard

INSULATION FOR FLOORS



- Premium performance rigid thermoset phenolic insulation – thermal conductivity of 0.018 W/m·K
- Can reduce the cost of related items – soil removal, service connections
- Unaffected by air infiltration
- Resistant to the passage of water vapour
- Easy to handle and install
- Ideal for new build and refurbishment
- Non-deleterious material
- Manufactured with a blowing agent that has zero ODP and low GWP



Low Energy –
Low Carbon Buildings

Typical Constructions and U-values

Assumptions

The U-values in the tables that follow have been calculated, under a management system certified to the BBA Scheme for Assessing the Competency of Persons to Undertake



U-value and Condensation Risk Calculations, using the method detailed in BS / I.S. EN ISO 13370: 2007 (Thermal performance of buildings. Heat transfer via the ground. Calculation methods), and using the conventions set out in BR 443 (Conventions for U-value calculations). They are valid for the constructions shown in the details immediately above each table.

Unlike roofs, walls and intermediate floors, U-value calculations for ground floors cannot be calculated with reference to the construction detail alone. Heat loss from ground floors depends upon the ratio of the exposed floor perimeter to the total floor area, the thickness of any basement wall and the depth of any basement.

Floor dimensions should be measured between the finished internal surfaces of the external walls. Non-usable heated space such as ducts and stairwells should be included when determining the area of the floor. Unheated spaces outside of the insulated fabric, such as attached garages or porches, should be excluded when determining the area of the floor, but the length of the wall between the heated building and the unheated space should be included when determining the perimeter. The floor dimensions of semi-detached, terraced or other joined premises / dwellings can be taken either as those of the premises / dwelling itself or those of the whole building. Where extensions to existing buildings are under consideration, the floor dimensions should be taken as those of the extension.

If the P/A ratio lies between two of the numbers shown in the tables that follow, for a safe estimate, please use the P/A ratio shown that is the next highest i.e. for 0.57 use 0.6.

For buildings with relatively small ground floor areas (primarily domestic properties), if the ground floor is left uninsulated, the thermal performance will be poor. To enhance the thermal performance, complete insulation of the ground floor should be adopted (Figures 1 & 7).

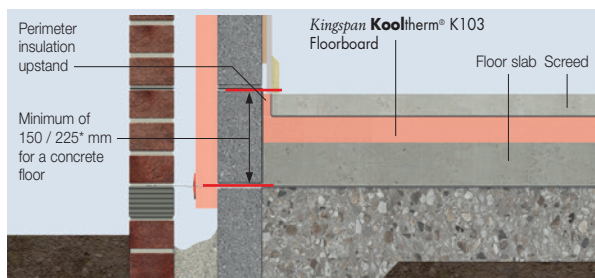


Figure 1: Complete Masonry Floor Insulation

For buildings with large ground floor areas (primarily non-domestic properties), complete insulation of the ground floor may be unnecessary. Insulating the perimeter may provide adequate thermal performance (Figure 2). For further advice on the width of the perimeter insulation please contact the Kingspan Insulation Technical Service Department.

Calculations in the tables that follow assume complete insulation of the floor area, please contact the Kingspan Insulation Technical Service Department for calculations with perimeter strip insulation only.

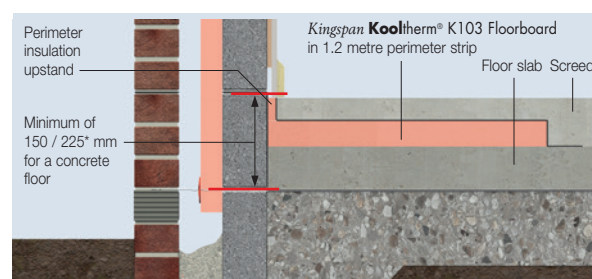


Figure 2: Perimeter Strip Masonry Floor Insulation

NB The figures quoted are for guidance only. A detailed U-value calculation should be completed for each project.

NB For the purposes of these calculations, using the method as detailed in BS / I.S. EN ISO 13370: 2007, the soil has been assumed to be sand or gravel, the wall insulation is assumed to overlap the floor insulation by minimum 150 / 225 mm for a concrete floor and 200 mm for a timber floor, and the standard of workmanship has been assumed good, and therefore the correction factor for air gaps has been ignored.*

NB If your construction is different from those specified, and / or to gain a comprehensive U-value calculation for your project, please consult the Kingspan Insulation Technical Service Department for assistance (see rear cover).

** 150 mm applies to the UK and 225 mm to the Republic of Ireland.*

U-value Table Key

Where an **X** is shown, the U-value is higher than the worst of the maximum new build area weighted average U-values allowed by the:

- 2013 editions of Approved Documents L to the Building Regulations for England;
- 2014 editions of Approved Documents L to the Building Regulations for Wales;
- 2015 editions of Technical Handbooks Section 6 to the Building Standards for Scotland;
- 2012 editions of Technical Booklets F1 & F2 to the Building Regulations for Northern Ireland; and
- 2011 edition of Technical Guidance Document L (Dwellings) and 2008 edition of Technical Guidance Document L (Buildings other than Dwellings) to the Building Regulations for the Republic of Ireland.

Beam and Dense* Block Ground Floors

Insulation Below the Floor Screed

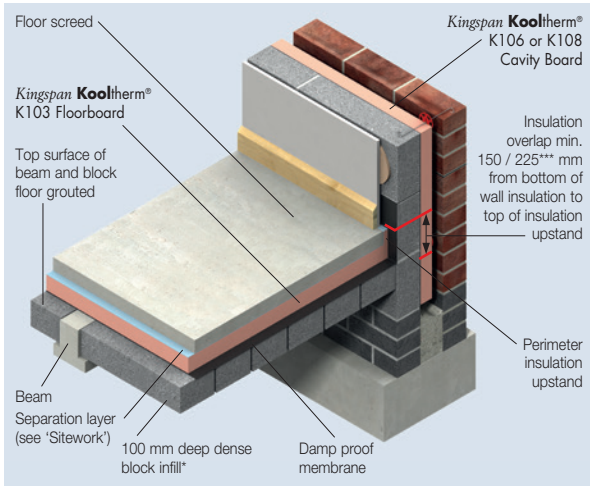


Figure 3

U-values (W/m²·K) for Various Thicknesses of Kingspan Kooltherm® K103 Floorboard and Floor Perimeter / Area Ratios

Insulant Thickness (mm)	Perimeter / Area (m ⁻¹)					
	0.2	0.3	0.4	0.5	0.6	0.7
25	X	X	X	X	X	X
30	X	X	X	X	X	X
40	0.23	0.25	X	X	X	X
45	0.22	0.24	0.25	X	X	X
50	0.20	0.22	0.24	0.24	0.25	0.25
60	0.18	0.20	0.21	0.21	0.22	0.22
70	0.17	0.18	0.19	0.19	0.20	0.20
75	0.16	0.17	0.18	0.18	0.19	0.19
80	0.15	0.16	0.17	0.17	0.18	0.18
90	0.14	0.15	0.15	0.16	0.16	0.16
100	0.13	0.14	0.14	0.15	0.15	0.15
110	0.12	0.13	0.13	0.13	0.14	0.14
120	0.11	0.12	0.12	0.13	0.13	0.13
125	0.11	0.12	0.12	0.12	0.12	0.12
130	0.11	0.11	0.12	0.12	0.12	0.12
140	0.10	0.11	0.11	0.11	0.11	0.11
150	0.10	0.10	0.10	0.10	0.10	0.11
80 + 80	0.09	0.09	0.10	0.10	0.10	0.10
80 + 90**	0.09	0.09	0.09	0.09	0.09	0.09

* Calculations assume dense block infill of λ -value (1.13 W/m·K)

** Where multiple layers of insulation of different thicknesses are used, the thickest layer should be installed as the outermost layer in the construction.

*** 150 mm applies to the UK and 225 mm to the Republic of Ireland.

Suspended Timber Ground Floors

Insulation Between Joists

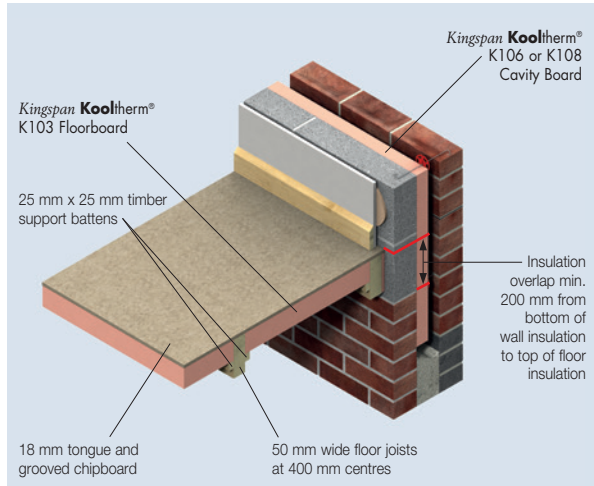


Figure 4

U-values (W/m²·K) for Various Thicknesses of Kingspan Kooltherm® K103 Floorboard and Floor Perimeter / Area Ratios

Insulant Thickness (mm)	Perimeter / Area (m ⁻¹)					
	0.2	0.3	0.4	0.5	0.6	0.7
45	X	X	X	X	X	X
50	X	X	X	X	X	X
60	0.24	X	X	X	X	X
70	0.22	0.25	X	X	X	X
75	0.22	0.24	0.25	X	X	X
80	0.21	0.23	0.24	0.25	X	X
90	0.20	0.21	0.23	0.23	0.24	0.24
100	0.18	0.20	0.21	0.22	0.22	0.23
110	0.17	0.19	0.20	0.20	0.21	0.21
120	0.17	0.18	0.19	0.19	0.20	0.20
125	0.16	0.17	0.18	0.19	0.19	0.19
130	0.16	0.17	0.18	0.18	0.18	0.19
140	0.15	0.16	0.17	0.17	0.17	0.18
150	0.14	0.15	0.16	0.16	0.17	0.17
80 + 80	0.14	0.15	0.15	0.15	0.16	0.16
80 + 90*	0.13	0.14	0.14	0.15	0.15	0.15
75 + 100***	0.13	0.14	0.14	0.14	0.15	0.15

* Where multiple layers of insulation of different thicknesses are used, the thickest layer should be installed as the outermost layer in.

**Suspended timber ground floor joists are typically 200 mm deep and, therefore, U-values have been calculated with a maximum insulation thickness of 175 mm, in order to accommodate 25 x 25 mm timber support battens.

Typical Constructions and U-values

Solid Concrete Ground Based Floors

Insulation Below the Floor Slab

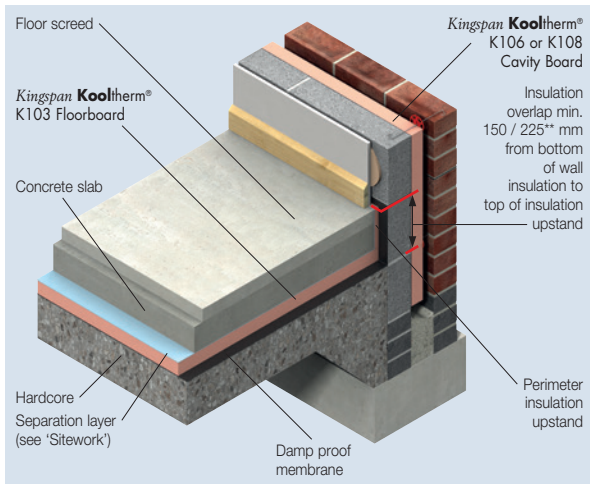


Figure 5

Insulation Below the Floor Screed

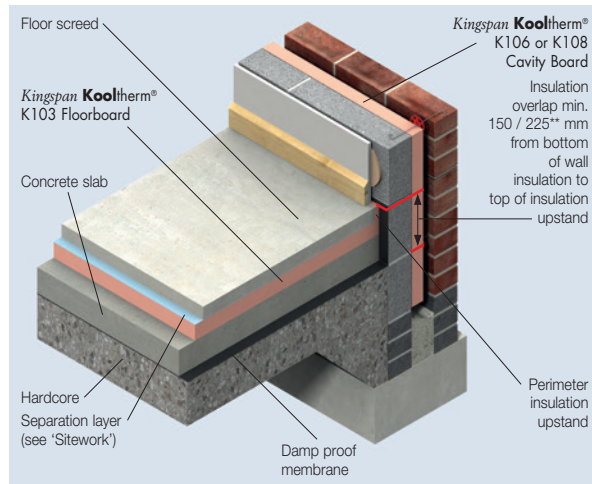


Figure 6

U-values (W/m²·K) for Various Thicknesses of Kingspan Kooltherm® K103 Floorboard and Floor Perimeter / Area Ratios

Insulant Thickness (mm)	Perimeter / Area (m ⁻¹)					
	0.2	0.3	0.4	0.5	0.6	0.7
25	0.25	X	X	X	X	X
30	0.24	X	X	X	X	X
40	0.21	0.24	X	X	X	X
45	0.20	0.22	0.24	0.25	X	X
50	0.18	0.21	0.23	0.24	0.25	0.25
60	0.17	0.19	0.20	0.21	0.22	0.22
70	0.15	0.17	0.18	0.19	0.19	0.20
75	0.14	0.16	0.17	0.18	0.18	0.19
80	0.14	0.15	0.16	0.17	0.17	0.18
90	0.13	0.14	0.15	0.16	0.16	0.16
100	0.12	0.13	0.14	0.14	0.15	0.15
110	0.11	0.12	0.13	0.13	0.14	0.14
120	0.11	0.11	0.12	0.12	0.13	0.13
125	0.10	0.11	0.12	0.12	0.12	0.12
130	0.10	0.11	0.11	0.12	0.12	0.12
140	0.09	0.10	0.11	0.11	0.11	0.11
150	0.09	0.10	0.10	0.10	0.10	0.11
80 + 80	0.09	0.09	0.09	0.10	0.10	0.10
80 + 90*	0.08	0.09	0.09	0.09	0.09	0.09
75 + 100*	0.08	0.09	0.09	0.09	0.09	0.09

* Where multiple layers of insulation of different thicknesses are used, the thickest layer should be installed as the outermost layer in the construction.

**150 mm applies to the UK and 225 mm to the Republic of Ireland.

U-values (W/m²·K) for Various Thicknesses of Kingspan Kooltherm® K103 Floorboard and Floor Perimeter / Area Ratios

Insulant Thickness (mm)	Perimeter / Area (m ⁻¹)					
	0.2	0.3	0.4	0.5	0.6	0.7
25	0.25	X	X	X	X	X
30	0.24	X	X	X	X	X
40	0.21	0.24	X	X	X	X
45	0.20	0.22	0.24	0.25	X	X
50	0.18	0.21	0.23	0.24	0.25	0.25
60	0.17	0.19	0.20	0.21	0.22	0.22
70	0.15	0.17	0.18	0.19	0.19	0.20
75	0.14	0.16	0.17	0.18	0.18	0.19
80	0.14	0.15	0.16	0.17	0.17	0.18
90	0.13	0.14	0.15	0.16	0.16	0.16
100	0.12	0.13	0.14	0.14	0.15	0.15
110	0.11	0.12	0.13	0.13	0.14	0.14
120	0.11	0.11	0.12	0.12	0.13	0.13
125	0.10	0.11	0.12	0.12	0.12	0.12
130	0.10	0.11	0.11	0.12	0.12	0.12
140	0.09	0.10	0.11	0.11	0.11	0.11
150	0.09	0.10	0.10	0.10	0.10	0.11
80 + 80	0.09	0.09	0.09	0.10	0.10	0.10
80 + 90*	0.08	0.09	0.09	0.09	0.09	0.09
75 + 100*	0.08	0.09	0.09	0.09	0.09	0.09

* Where multiple layers of insulation of different thicknesses are used, the thickest layer should be installed as the outermost layer in the construction.

**150 mm applies to the UK and 225 mm to the Republic of Ireland.

Heat Loss and Linear Thermal Bridging

Linear thermal bridging describes the heat losses that occur at junctions between elements, which is additional to the losses occurring through roofs, walls and floors. This heat loss is represented by the junction's psi (ψ) value. The lower the ψ -value, the better the performance of a junction detail. The ψ -values and lengths of linear thermal bridges are accounted for in whole building energy and carbon dioxide emissions calculations.

In a typical wall-to-ground floor junction the heat will flow through the easiest path, for example in a masonry cavity wall the linear thermal bridge is primarily the inner leaf of masonry and in a timber frame wall the linear thermal bridge is primarily the sole plate and the construction below it. These linear thermal bridges can be reduced by increasing the distance that the heat has to travel.

Approved details, such as the Accredited Construction Details (England & Wales / Scotland / Northern Ireland) and Acceptable Construction Details (Republic of Ireland), collectively referred to here as ACDs, can uplift performance to provide a clear starting point towards achieving compliance, but they are limited in scope and applicability. The greatest opportunity for mitigating the impact of linear thermal bridges can come from following accurately 'modelled' details that take into account the following design considerations.

In order to minimise cold bridging at the edge of the floor, the distance between the top surface of the floor insulation or perimeter insulation upstand, and the bottom of the wall insulation must be a minimum of 150 / 225* mm for a concrete floor (see Figures 1 & 2) and 200 mm for a suspended timber floor (see Figure 7). The further down the wall insulation extends past the floor insulation, the better the thermal performance of the junction between the wall and the floor.

* 150 mm applies to the UK and 225 mm to the Republic of Ireland.

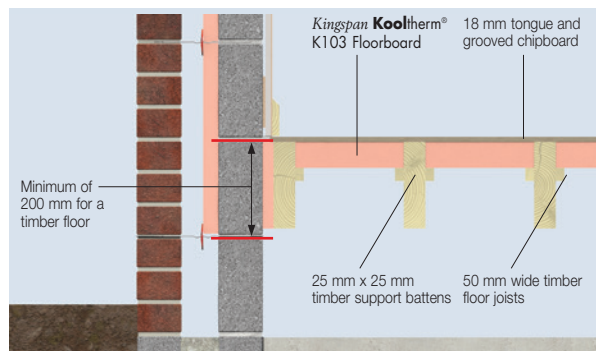


Figure 7: Complete Timber Floor Insulation

Perimeter upstand insulation helps to reduce heat losses from the junction between the floor and external walls. The upstand insulation helps to increase the distance that the heat has to travel in order to escape through the junction, which therefore helps to reduce heat loss. Omitting this, or using a poorer performing insulation, can increase these losses.

Using better thermally performing 'lightweight' aggregate blockwork on the inner leaf in adjacency to the junction with the floor can assist with lowering heat losses from the junction.

An internal lining of insulation on the warm side of the construction can help to reduce the heat losses through the junction. The internal lining could be a wall lining for the whole wall area, such as Kingspan Kooltherm K118 Insulated Plasterboard, or could be a localised insulation behind the plasterboard to help reduce a junction's losses through the timber sole plate.

For further advice on details to reduce linear thermal bridging please contact the Kingspan Insulation Technical Service Department (see rear cover for details).

Design Considerations

Responsible Sourcing

Kingspan Kooltherm[®] K103 Floorboard produced at Kingspan Insulation's Pembridge manufacturing facility is certified to BES 6001 (Framework Standard for the Responsible Sourcing of Construction Products) 'Excellent'.

NB The above information is correct at the time of writing. Please confirm at the point of need by contacting Kingspan Insulation's Technical Service Department (see rear cover), from which a copy of Kingspan Insulation's BES 6001 certificate can be obtained.



Sustainability & Responsibility

Kingspan Insulation has a long-term commitment to sustainability and responsibility: as a manufacturer and supplier of insulation products; as an employer; as a substantial landholder; and as a key member of its neighbouring communities.

A report covering the sustainability and responsibility of Kingspan Insulation Ltd's British operations at its Pembridge, Herefordshire and Selby, North Yorkshire manufacturing facilities is available at www.kingspaninsulation.co.uk/sustainabilityandresponsibility.

NBS Specifications

Details also available in NBS Plus.
NBS users should refer to clause(s):
E20 200, M10 290, M13 260
(Standard and Intermediate)
E20 30 (Minor Works)



Specification Clause

Kingspan Kooltherm[®] K103 Floorboard should be described in specifications as:-

The floor insulation shall be *Kingspan Kooltherm*[®] K103 Floorboard ____ mm thick: comprising a premium performance rigid thermoset fibre-free phenolic insulation core faced on both sides with a flexible facing. The product shall be manufactured: with a blowing agent that has zero Ozone Depletion Potential (ODP) and low Global Warming Potential (GWP); under a management system certified to ISO 9001: 2008, ISO 14001: 2004; BS OHSAS 18001: 2007 and ISO 50001: 2011; by Kingspan Insulation Limited; and installed in accordance with the instructions issued by them.

Design Standards

Consideration should be given to the recommendations of BS 8102: 2009 (Code of practice for protection of buildings against water from the ground), BS 8215: 1991 (Code of practice for design and installation of damp proof courses in masonry construction), and the information given in Building Research Establishment Digest 104 (Floor Screeds).

Compressive Loads

Un-reinforced floor screeds can be used in conjunction with *Kingspan Kooltherm*[®] K103 Floorboard in most applications. The compressive strength of *Kingspan Kooltherm*[®] K103 Floorboard offers considerable advantages over some other floor insulants. Providing a minimum compressive strength of 120 kPa at 10% compression allows greater floor loads to be considered and therefore additional scope in the use of *Kingspan Kooltherm*[®] K103 Floorboard. However, where floor loads are to be excessive, consideration should be given to the use of *Kingspan Styrozone*[®] extruded polystyrene insulation which has greater compressive strength. For further information please contact the Kingspan Insulation Technical Service Department (see rear cover).

Substrate

Kingspan Kooltherm[®] K103 Floorboard is not recommended for use in direct contact with subsoil and must be used over a DPM.

Lightning Protection

Building designers should give consideration to the requirements of BS / I.S. EN 62305 (Protection against lightning).

Underfloor Heating Systems

The constructions shown in the Typical Constructions and U-values section can be readily converted to accommodate underfloor heating systems.

For a solid concrete floor, the position of the insulation is important in either exposing the thermal mass of the concrete floor to the heat provided by the system, or isolating the thermal mass from it.

For a 24 hour heating cycle, allowing the heat from the underfloor heating system to penetrate the concrete slab will provide a more even heating regime over a 24 hour period (Figure 8).

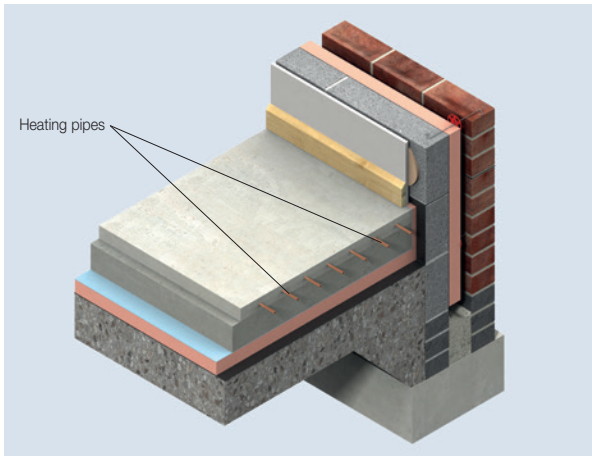


Figure 8: 24 Hour Heating Application – Below the Floor Slab

For intermittent heating applications, where a fast response time is required, it is beneficial to have less thermal mass available to take up heat from the system and so placing the insulation layer below the screed but above the concrete slab (Figure 9) or beam and block floor (Figure 10) is the best solution.

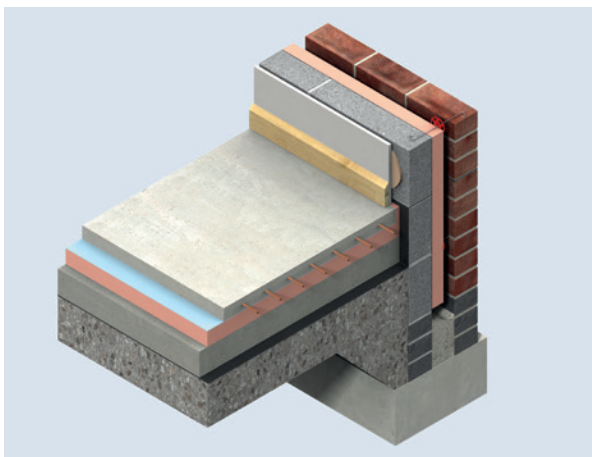


Figure 9: Intermittent Heating Applications – Below the Floor Screed

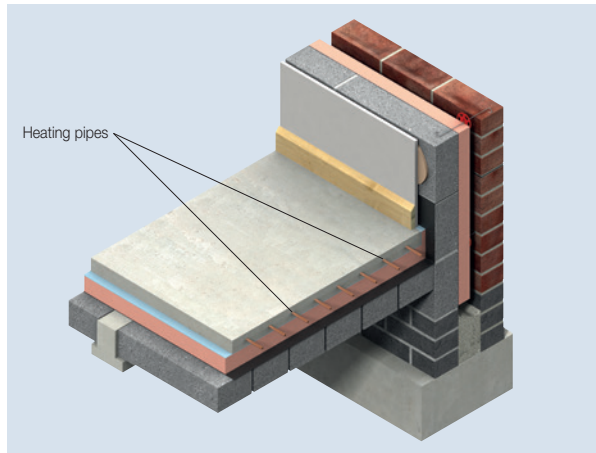


Figure 10: Intermittent Heating Applications – Beam and Block Floor

Underfloor heating systems can also be accommodated in suspended timber floors. This arrangement has low thermal mass and so is more suited to intermittent heating applications (Figure 11).

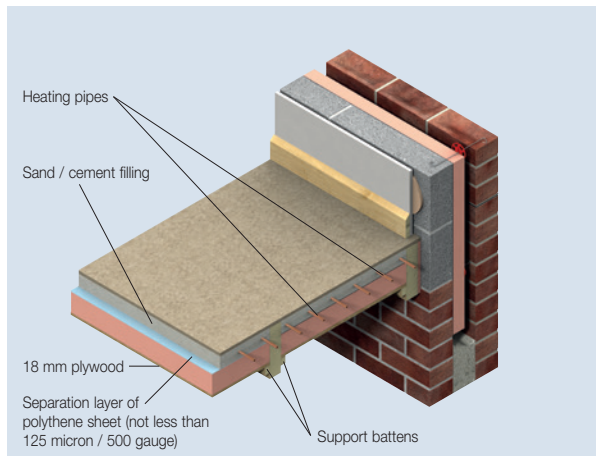


Figure 11: Intermittent Heating Applications – Suspended Timber Floor

Sitework

Installation Below a Floor Slab

- The site should be prepared and foundations, where appropriate, built to damp proof course (DPC) level.
- A thin sand blinding may be used to achieve a continuous level surface free from projections over rolled hardcore.
- The damp proof membrane (minimum 300 micron / 1200 gauge polythene) should be laid with joints well lapped and folded, to prevent the passage of ground water, over well compacted hardcore, prior to laying the insulation boards.
- The membrane should be brought up the surrounding foundation walls until it is sufficiently above the height of the wall DPC so that it will connect with or form the DPC.
- The insulation boards should always be loose-laid break-bonded, with joints lightly butted.
- If two layers of insulation are required, they should be horizontally offset relative to each other so that, as far as possible, the board joints in the two adjacent layers do not coincide with each other (see Figure 12).

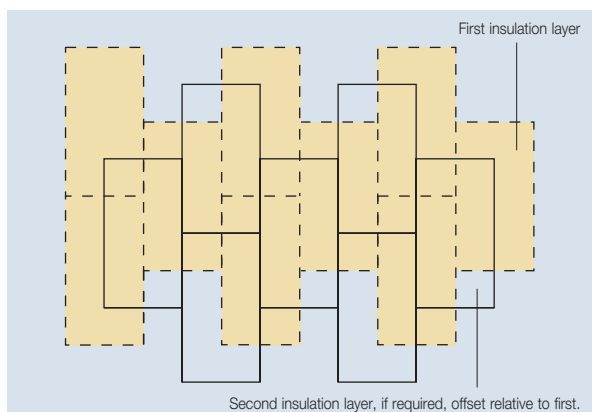


Figure 12 Offsetting of Multiple Insulation Layers

- A strip of the insulation board (minimum 20 mm thick) should be placed vertically around the perimeter of the floor slab in order to prevent cold bridging. The top of the strip of insulation board should be level with the top of the floor screed and the bottom should be level with the bottom of the horizontal floor insulation, and be closely butted up to it.
- Insulation boards should be overlaid with a polythene sheet (not less than 125 micron / 500 gauge), to prevent the wet concrete penetrating the joints between the boards, and to act as a vapour control layer. Ensure the polythene sheet has 150 mm overlaps, taped at the joints, and is turned up 100 mm at the walls.
- The subsequent installation of the concrete slab and screed or other flooring material is carried out in a manner similar to that for an un-insulated floor. The concrete slab and screed should be allowed to dry out prior to the installation of the floor finish.

Installation Below a Floor Screed

- Concrete slabs should be allowed to dry out fully prior to the installation of the insulation boards (average 1 day per mm of slab thickness).
- The surface of the slab should be smooth, flat and free from projections. Beam and block floors should be level and grouted. Rough cast slabs should be levelled using a thin sand blinding to ensure boards are continuously supported.
- The damp proof membrane (minimum 300 micron / 1200 gauge polythene) should be laid with joints well lapped and folded, to prevent the passage of ground water, over the concrete floor slab, or beam and block floor prior to laying the insulation boards.
- The membrane should be brought up the surrounding foundation walls until it is sufficiently above the height of the wall DPC so that it will connect with or form the DPC.
- The insulation boards should always be loose-laid break-bonded, with joints lightly butted.
- If two layers of insulation are required, they should be horizontally offset relative to each other so that, as far as possible, the board joints in the two adjacent layers do not coincide with each other (see Figure 12).
- A strip of the insulation board (minimum 20 mm thick) should be placed vertically around the perimeter of the floor slab in order to prevent cold bridging. The top of the strip of insulation board should be level with the top of the floor screed and the bottom should be level with the bottom of the horizontal floor insulation, and closely butted up to it.
- Insulation boards should be overlaid with a polythene sheet (not less than 125 micron / 500 gauge), to prevent the wet screed penetrating the joints between the boards, and to act as a vapour control layer. Ensure the polythene sheet has 150 mm overlaps, taped at the joints, and is turned up 100 mm at the walls.
- Use sand and cement screed laid to a minimum thickness of 65 mm for domestic construction and 75 mm elsewhere.

Installation in a Suspended Timber Floor

Installation from Above the Floor Joists

- The installation of *Kingspan Kooltherm*® K103 Floorboard in suspended floor constructions should be carried out before commencement of floor boarding.
- The insulation boards should be cut to fit snugly between the floor joists. Measure the distance between the joists prior to cutting the boards as spacings can vary.
- In order to ensure insulation boards are flush with the top surface of the joists, they should be supported on minimum 25 mm x 25 mm treated softwood timber battens, proprietary galvanised steel saddle clips, or galvanised nails partially driven into the side of the joists.

- Battens / nails should be placed at an appropriate height to suit the thickness of board being fitted, and nails should remain 40 mm proud of the joist.
- The insulation boards should then be fitted between the joists so that they are supported by the battens / saddle clips or nails.
- If two layers of insulation are required, they should be horizontally offset relative to each other so that, as far as possible, the board joints in the two adjacent layers do not coincide with each other.
- All board joints should be tightly butted.
- Ensure that insulation boards are fitted tightly between joists, and any gaps are filled with expanding urethane sealant.
- Any narrow gaps between a joist and perimeter wall should be insulated by specially cut pieces of board which in turn should be supported on blocks nailed to the underside of the joists. Gaps less than 25 mm wide should be filled with expanding urethane sealant.
- **Kingspan Kooltherm® K103 Floorboard** is not suitable for installation directly over timber joists.

Installation from Below the Floor Joists

- Floor boards should be fixed over joists prior to fitting **Kingspan Kooltherm® K103 Floorboard** from below.
- The insulation boards should be cut to fit snugly between the floor joists. Measure the distance between the joists prior to cutting the boards as spacings can vary.
- Push the cut insulation boards between the joists so they are flush with the underside of the floor boards.
- If two layers of insulation are required, they should be horizontally offset relative to each other so that, as far as possible, the board joints in the two adjacent layers do not coincide with each other.
- All board joints should be tightly butted.
- Ensure that insulation boards are fitted tightly between joists, and any gaps are filled with expanding urethane sealant.
- Side-nail 25 mm x 25 mm timber battens to the joists or partially drive galvanised nails into the side of the joists in the appropriate position to hold the boards in place.
- Any narrow gaps between a joist and perimeter wall should be insulated by specially cut pieces of board which in turn should be supported on blocks nailed to the underside of the joists. Gaps less than 25 mm wide should be filled with expanding urethane sealant.

Wheeled / Foot Traffic

- Ensure boards are protected during installation from wheeled / foot traffic by using scaffold planks or other protective measures.

Underfloor Heating Systems

- Please refer to the instructions of the specific underfloor heating system manufacturer.

General

Cutting

- Cutting should be carried out either by using a fine toothed saw, or by scoring with a sharp knife, snapping the board over a straight edge and then cutting the facing on the other side.
- Ensure accurate trimming to achieve close-butting joints and continuity of insulation.

Daily Working Practice

- At the completion of each day's work, or whenever work is interrupted for extended periods of time, board edges and joints should be protected from inclement weather.

Availability

- **Kingspan Kooltherm® K103 Floorboard** is available through specialist insulation distributors and selected builders' merchants throughout the UK and Ireland.

Packaging and Storage

- The polyethylene packaging of Kingspan Insulation products, which is recyclable, should not be considered adequate for outdoor protection.
- Ideally, boards should be stored inside a building. If, however, outside storage cannot be avoided, then the boards should be stacked clear of the ground and covered with an opaque polythene sheet or weatherproof tarpaulin. Boards that have been allowed to get wet should not be used.

Health and Safety

- Kingspan Insulation products are chemically inert and safe to use.
- A Safety Information Data Sheet for this product is available from the Kingspan Insulation website www.kingspaninsulation.co.uk/safety or www.kingspaninsulation.ie/safety.

Warning – do not stand on or otherwise support your weight on this product unless it is fully supported by a load bearing surface.

Product Details

The Facings

Kingspan Kooltherm® K103 Floorboard produced at Kingspan Insulation's Pembridge manufacturing facility is faced on both sides with a glass tissue based facing, autohesively bonded to the insulation core during manufacture.

The Core

The core of *Kingspan Kooltherm*® K103 Floorboard is a premium performance rigid thermoset fibre-free phenolic insulant manufactured with a blowing agent that has zero Ozone Depletion Potential (ODP) and low Global Warming Potential (GWP).



Standards & Approvals

Kingspan Kooltherm® K103 Floorboard is manufactured to the highest standards under a management system certified to ISO 9001: 2008 (Quality Management Systems. Requirements), ISO 14001: 2004 (Environmental Management Systems. Requirements), BS OHSAS 18001: 2007 (Occupational Health & Safety Management Systems. Requirements) and ISO 50001: 2011 (Energy Management Systems. Requirements with guidance for use).

Standard Dimensions

Kingspan Kooltherm® K103 Floorboard is available in the following standard size(s):

Nominal Dimension		Availability
Length	(m)	2.4
Width	(m)	1.2
Insulant Thickness	(mm)	Refer to local distributor or Kingspan Insulation price list for current stock and non-stock sizes.

Compressive Strength

The compressive strength of *Kingspan Kooltherm*® K103 Floorboard typically exceeds 120 kPa at 10% compression, when tested to BS / I.S. EN 826: 2013 (Thermal insulating products for building applications. Determination of compression behaviour).

Water Vapour Resistivity

Kingspan Kooltherm® K103 Floorboard produced at Kingspan Insulation's Pembridge manufacturing facility typically achieves a resistivity greater than 300 MN·s/g·m, when tested in accordance with BS EN 12086: 2013 (Thermal insulating products for building applications Determination of water vapour transmission properties).

Durability

If correctly installed, *Kingspan Kooltherm*® K103 Floorboard can have an indefinite life. Its durability depends on the supporting structure and the conditions of its use.

Resistance to Solvents, Fungi & Rodents

The insulation core is resistant to short-term contact with petrol and with most dilute acids, alkalis and mineral oils. However, it is recommended that any spills be cleaned off fully before the boards are installed. Ensure that safe methods of cleaning are used, as recommended by the suppliers of the spilt liquid. The insulation core is not resistant to some solvent-based adhesive systems, particularly those containing methyl ethyl ketone. Adhesives containing such solvents should not be used in association with this product. Damaged boards or boards that have been in contact with harsh solvents or acids should not be used.

The insulation core and facings used in the manufacture of *Kingspan Kooltherm*® K103 Floorboard resist attack by mould and microbial growth, and do not provide any food value to vermin.

Fire Performance

Details on the fire performance of Kingspan Insulation products may be obtained from the Kingspan Insulation Technical Service Department (see rear cover).

Thermal Properties

The λ -values and R-values detailed below are quoted in accordance with BS EN 13166: 2012 (Thermal insulation products for buildings – Factory made products of phenolic foam (PF) – Specification).

Thermal Conductivity

The boards achieve a thermal conductivity (λ -value) of 0.018 W/m·K.

Thermal Resistance

Thermal resistance (R-value) varies with thickness and is calculated by dividing the thickness of the board (expressed in metres) by its thermal conductivity. The resulting number is rounded down to the nearest 0.05 (m²·K/W).

Insulant Thickness (mm)	Thermal Resistance (m ² ·K/W)
25	1.35
30	1.65
35	1.90
40	2.20
45	2.50
50	2.75
60	3.30
70	3.85
75	4.15
80	4.40
90	5.00
100	5.55
110	6.10
120	6.65
125	6.90
130	7.20
140	7.75
150	8.30

NB Refer to local distributor or Kingspan Insulation price list for current stock and non-stock sizes.

Kingspan Insulation

Insulation Product Benefits

Kingspan **OPTIM-R**® Vacuum Insulation Panel (VIP) Products

- With an aged design value thermal conductivity of 0.007 W/m·K, these products provide an insulating performance that is up to five times better than commonly used insulation materials.
- Provides high levels of thermal efficiency with minimal thickness.
- Over 90% (by weight) recyclable.

Kingspan **Kooliherm**® K-range Products

- With a thermal conductivity of 0.018–0.023 W/m·K these are the most thermally efficient insulation products commonly used.
- The thinnest commonly used insulation products for any specific U-value.
- Each product achieves the required fire performance for its intended application.
- Manufactured with a blowing agent that has zero Ozone Depletion Potential (ODP) and low Global Warming Potential (GWP).

Kingspan **Therma**™ Range Products

- With a thermal conductivity of 0.022–0.028 W/m·K these are amongst the more thermally efficient insulation products commonly used.
- Each product achieves the required fire performance for its intended application.
- Manufactured with a blowing agent that has zero Ozone Depletion Potential (ODP) and low Global Warming Potential (GWP).

Kingspan **Styrozone**® Range Products

- Rigid extruded polystyrene insulation (XPS) has the necessary compressive strength to make it the product of choice for specialist applications such as heavy duty flooring, car park decks and inverted roofing.
- Each product achieves the required fire performance for its intended application.
- Manufactured with a blowing agent that has zero Ozone Depletion Potential (ODP).

All Products

- Unaffected by air infiltration – a problem that can be experienced with mineral fibre and which can reduce thermal performance.
- Safe and easy to install.
- If installed correctly, can provide reliable long term thermal performance over the lifetime of the building.

Contact Details

Customer Service

For quotations, order placement and details of despatches please contact the Kingspan Insulation Customer Service Department on the numbers below:

UK	- Tel:	+44 (0) 1544 388 601
	- Fax:	+44 (0) 1544 388 888
	- email:	customerservice@kingspaninsulation.co.uk
Ireland	- Tel:	+353 (0) 42 979 5000
	- Fax:	+353 (0) 42 975 4299
	- email:	info@kingspaninsulation.ie

Literature & Samples

Kingspan Insulation produces a comprehensive range of technical literature for specifiers, contractors, stockists and end users. The literature contains clear 'user friendly' advice on typical design; design considerations; thermal properties; sitework and product data.

Available as a complete Design Manual or as individual product brochures, Kingspan Insulation technical literature is an essential specification tool. For copies please contact the Kingspan Insulation Marketing Department, or visit the Kingspan Insulation website, using the details below:

UK	- Tel:	+44 (0) 1544 387 384
	- Fax:	+44 (0) 1544 387 484
	- email:	literature@kingspaninsulation.co.uk
	- www.kingspaninsulation.co.uk/literature	
Ireland	- Tel:	+353 (0) 42 979 5000
	- Fax:	+353 (0) 42 975 4299
	- email:	info@kingspaninsulation.ie
	- www.kingspaninsulation.ie/literature	

Tapered Roofing

For technical guidance, quotations, order placement and details of despatches please contact the Kingspan Insulation Tapered Roofing Department on the numbers below:

UK	- Tel:	+44 (0) 1544 387 383
	- Fax:	+44 (0) 1544 387 483
	- email:	tapered@kingspaninsulation.co.uk
Ireland	- Tel:	+353 (0) 42 975 4297
	- Fax:	+353 (0) 42 975 4296
	- email:	tapered@kingspaninsulation.ie

Technical Advice / Design

Kingspan Insulation supports all of its products with a comprehensive Technical Advisory Service for specifiers, stockists and contractors.

This includes a computer-aided service designed to give fast, accurate technical advice. Simply phone the Kingspan Insulation Technical Service Department with your project specification. Calculations can be carried out to provide U-values, condensation / dew point risk, required insulation thicknesses etc... Thereafter any number of permutations can be provided to help you achieve your desired targets.

The Kingspan Insulation Technical Service Department can also give general application advice and advice on design detailing and fixing etc... Site surveys are also undertaken as appropriate.

The Kingspan Insulation British Technical Service Department operates under a management system certified to the BBA Scheme for Assessing the Competency of Persons to Undertake U-value and Condensation Risk Calculations.



Please contact the Kingspan Insulation Technical Service Department on the numbers below:

UK	- Tel:	+44 (0) 1544 387 382
	- Fax:	+44 (0) 1544 387 482
	- email:	technical@kingspaninsulation.co.uk
Ireland	- Tel:	+353 (0) 42 975 4297
	- Fax:	+353 (0) 42 975 4296
	- email:	technical@kingspaninsulation.ie

General Enquiries

For all other enquiries contact Kingspan Insulation on the numbers below:

UK	- Tel:	+44 (0) 1544 388 601
	- Fax:	+44 (0) 1544 388 888
	- email:	info@kingspaninsulation.co.uk
Ireland	- Tel:	+353 (0) 42 979 5000
	- Fax:	+353 (0) 42 975 4299
	- email:	info@kingspaninsulation.ie

Kingspan Insulation Ltd. reserves the right to amend product specifications without prior notice. Product thicknesses shown in this document should not be taken as being available ex-stock and reference should be made to the current Kingspan Insulation price-list or advice sought from Kingspan Insulation's Customer Service Department (see above left). The information, technical details and fixing instructions etc. included in this literature are given in good faith and apply to uses described. Recommendations for use should be verified for suitability and compliance with actual requirements, specifications and any applicable laws and regulations. For other applications or conditions of use, Kingspan Insulation offers a Technical Advisory Service (see above), the advice of which should be sought for uses of Kingspan Insulation products that are not specifically described herein. Please check that your copy of this literature is current by contacting the Kingspan Insulation Marketing Department (see left).

Kingspan Insulation Ltd is a member of:
The National Insulation Association (NIA)



Kingspan Insulation Ltd
Pembridge, Leominster, Herefordshire HR6 9LA, UK
Castleblayney, County Monaghan, Ireland

www.kingspaninsulation.co.uk www.kingspaninsulation.ie

® Kingspan, Kooltherm, OPTIM-R, Styrozone and the Lion Device are Registered Trademarks of the Kingspan Group plc in the UK, Ireland and other countries. All rights reserved.
™ Therma is a Trademark of the Kingspan Group plc.

Registered in England & Wales, No. 01882722. Registered Office: Pembridge, Leominster, Herefordshire HR6 9LA UK. VAT GB428602456.
Registered in Ireland, No. 54621. Registered Office: Bree Industrial Estate, Castleblayney, Co. Monaghan, Ireland. VAT IE4575069I.