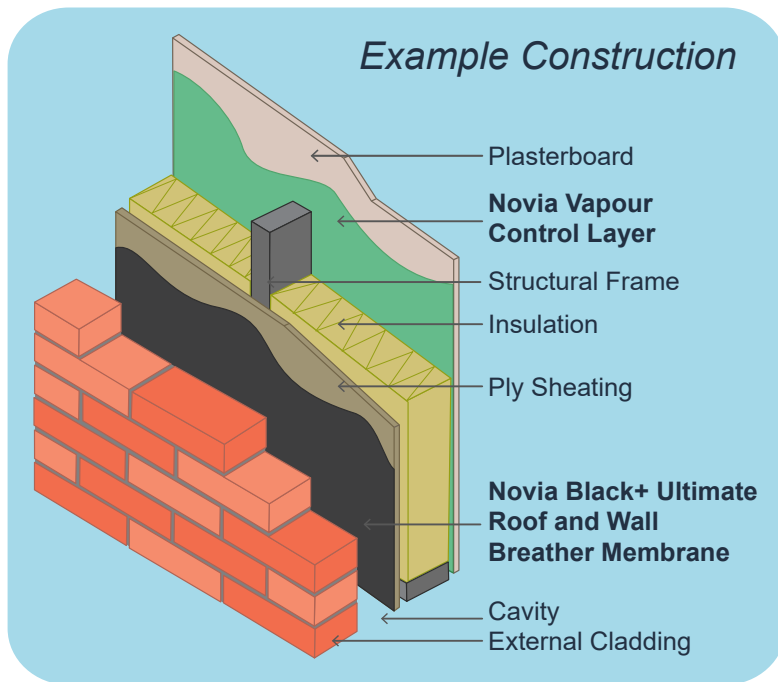
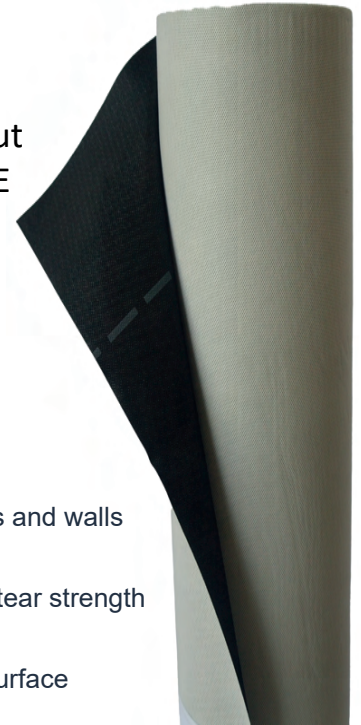


Novia® Black+ Ultimate Breather Membrane is a high quality versatile membrane for all pitched cold and warm roofs, and insulated wall applications. The membrane meets EN 13859-1 for pitched roofing and EN 13859-2 for walls. **Novia® Black+ Ultimate** has excellent water resistance but still provides high breathability; it is strong yet lightweight and meets class E EN 13501-1 fire classification. **Novia® Black+ Ultimate** is coloured black on one side and grey on the other, but with no text or images on either side, except overlap guide lines.



- Highly waterproof
- Highly vapour permeable
- Single product for all roofs and walls
- Excellent tensile and nail tear strength
- Matt finish slip-resistant surface
- Grade E (fire) to EN 13501-1
- Install as per BS 5534: 2014+A2: 2018 UV guidance
- UKCA to EN 13859-1 and EN13859-2
- Tested for BS 5534 wind uplift requirements

	Value	Units	Test Method
Standard Width	1.5	m	
Roll Length	50	m	
Roll Weight	13	kg	EN 1849-2
Nominal weight	170	g/m ²	EN 1849-2
Tensile strength MD / CD	400 / 260	N/50mm	EN 12311-1
Elongation MD / CD	80 / 100	%	EN 12311-1
Resistance to tearing MD / CD	190 / 190	N	EN 12310-1
Sd value	0.029	m	EN 12572
Resistance to water penetration	W1	Class	EN 1928
Resistance to water penetration (after ageing)	W1	Class	EN 1928
Low temperature stability (no cracking at)	-60	°C	EN 1109
Reaction to fire	E	Class	EN 11925-2
UV resistance	Install as per BS 5534: 2014 + A2: 2018 UV Guidance		



DS0123B+ULTBREATH

Installation guidance for walls :

Fix the Novia Black+ Ultimate Breather Membrane to the wall structure; ensure upper layers overlap lower layers. Work from the bottom moving upwards and ensuring there are minimum overlaps of 100 mm on the horizontal joints. Do not begin a vertical lap joint within 300 mm of a corner, and vertical laps should be at least 150 mm. Ensure the bottom timber is also protected by an overlap. Fix at suitable intervals with galvanised nails, stainless staples or similar fixings that will be permanent.

Do not leave the membrane unnecessarily exposed to weathering, high winds, excessive UV etc. as this may cause damage over time. If you must leave the membrane exposed for extended periods of time, consider the use of suitable temporary protection materials.

Installation guidance for roofs :

Novia Black+ Ultimate Breather can be installed within both warm and cold roofs. On insulated warm roofs the membrane may be placed directly onto the insulation. Novia Black+ Ultimate Breather can also be used in conventional cold roof applications. Novia Black+ Breather is also suitable for fully boarded roof applications.

Fix the membrane to the roof structure; ensure upper layers overlap lower layers. Work from the bottom moving upwards and ensure there are minimum overlaps as shown in the table below.

Minimum Overlap

Roof Pitch	Horizontal Lap (mm)	Vertical Lap (mm)
12.5° to under 15°	225	100
15° and above	150	100

The membrane should be overlapped 200 mm on each side of the ridge. All vertical overlaps must be situated on a rafter and must be sealed. Fix at suitable intervals with galvanised nails, stainless staples or similar fixings that will be permanent. At any entry points for services (soil pipes, vents etc.), ensure that Novia Black+ Ultimate Breather is properly sealed. Where pipes etc. penetrate the underlay, cut neatly and accurately and turn edges up to give a tight water-resistant fit.

Wind Uplift

	≤ 345mm batten gauge with battened laps	≤ 250mm batten gauge with battened laps	≤ 345mm batten gauge with taped laps	≤ 345mm batten gauge with minimum 11mm counterbatten
Novia Black+ Zone Suitability	Zone 1 to 4	Zone 1 to 5	Zone 1 to 5	Zone 1 to 5
Novia Black+ Wind Uplift Resistance	1529 Pa	2613 Pa	>1600 Pa	>1600 Pa

Tapes

We strongly advise the use of Novia installation tapes, which will greatly improve the performance and overall airtightness of the roof, even if tape is not specified for mandatory use within a particular zone under the BS 5534 wind uplift test results. We offer a single-sided Novia Breather Membrane Lap Tape for basic installations, and for high specification work where there is even greater emphasis on air-tightness we offer the optional Novia Double-Sided Adhesive Tape. For the very best standards of installation and air-tightness, we advise the use both types of tape, which will ensure a long lasting, high quality, breathable and air-tight seal is formed.

Other notes :

- Ensure that for all wall or warm roof applications, a Novia vapour barrier such as Novia VC2 or VC200 Reflective is installed on the warm side of the insulation to limit unwanted interstitial condensation. As little as 1 - 3% moisture contamination within the insulation can adversely affect the achieved thermal performance by more than 30%.
- Novia Black+ Breather will reduce the risk of condensation within the roof space but in certain atmospheric conditions it can never be totally eliminated.
- Always handle material carefully to prevent tears and punctures and repair all damage.
- Ensure that sufficient ventilation is incorporated to comply with all relevant building regulations and technical standards, such as BS 5250.
- Store product in suitable conditions.

This datasheet represents the latest understanding of the subject. However, it is for the ultimate user to determine suitability of our products within specific applications. The advice and information we have provided is general in nature, and is subject to future revision.

DS0123B+ULTBREATH