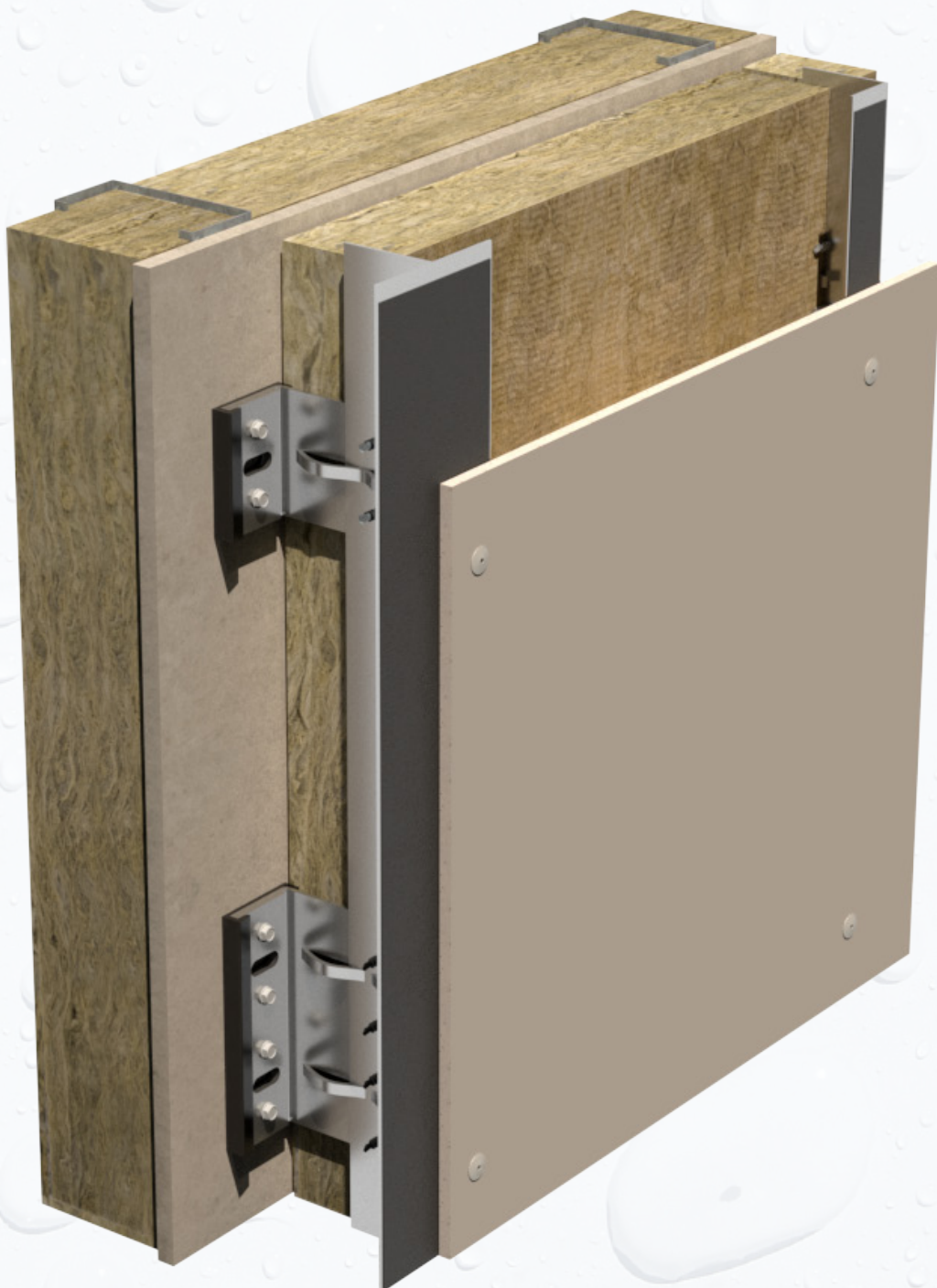
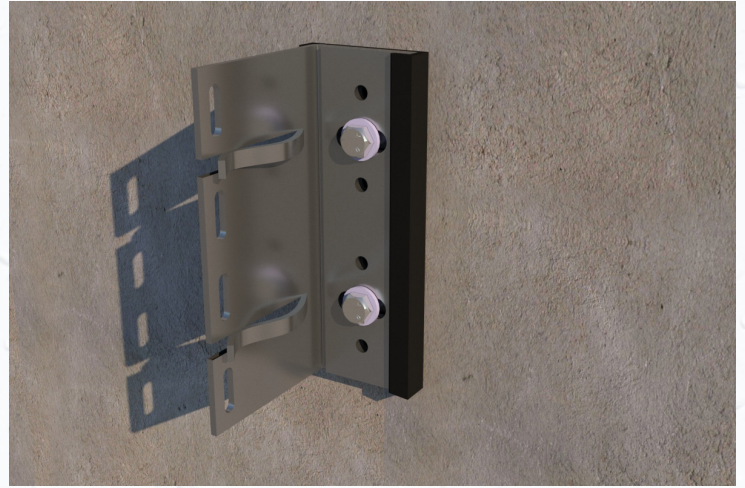


Typical details





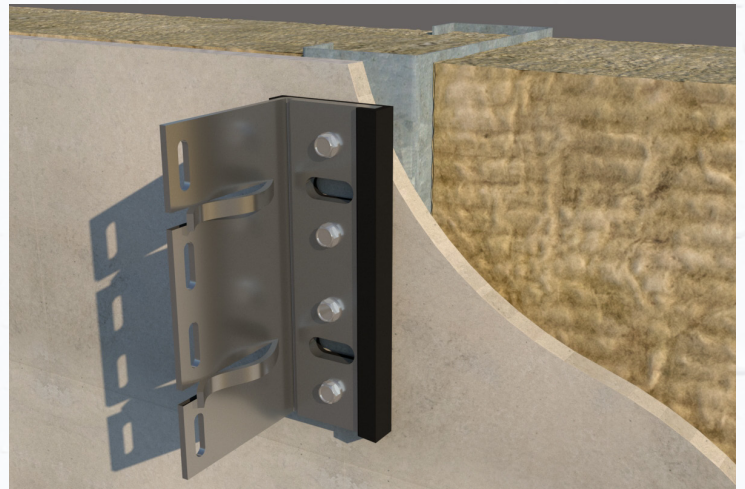
Single bracket on to concrete



Double bracket on to concrete

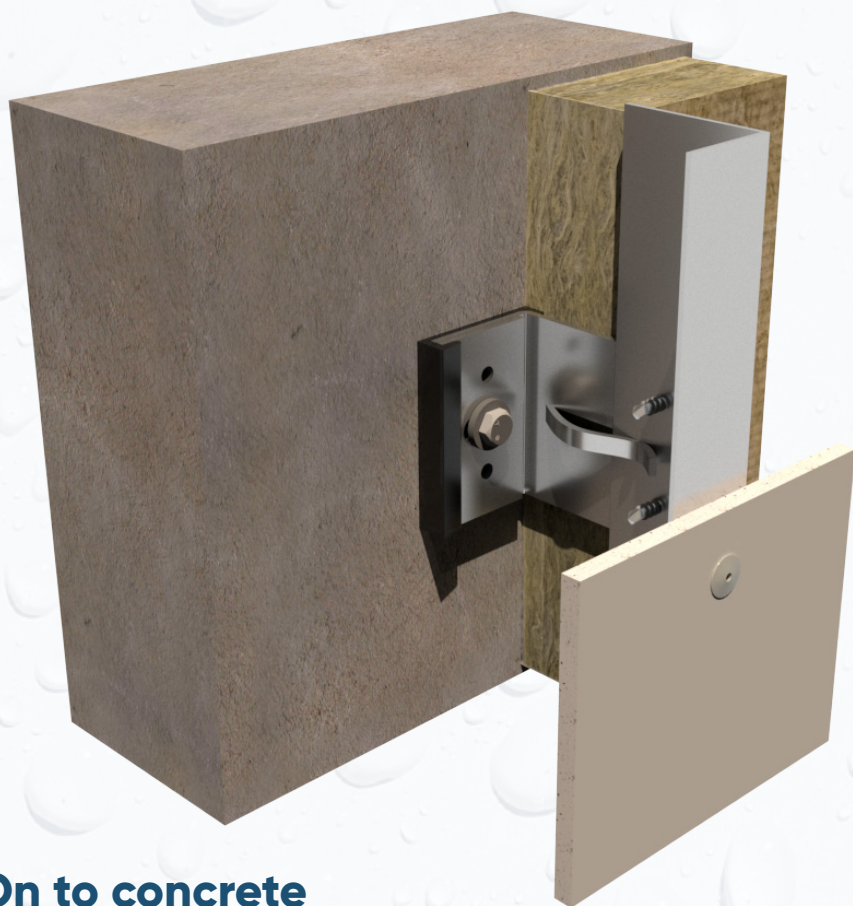


Single bracket on to steel frame

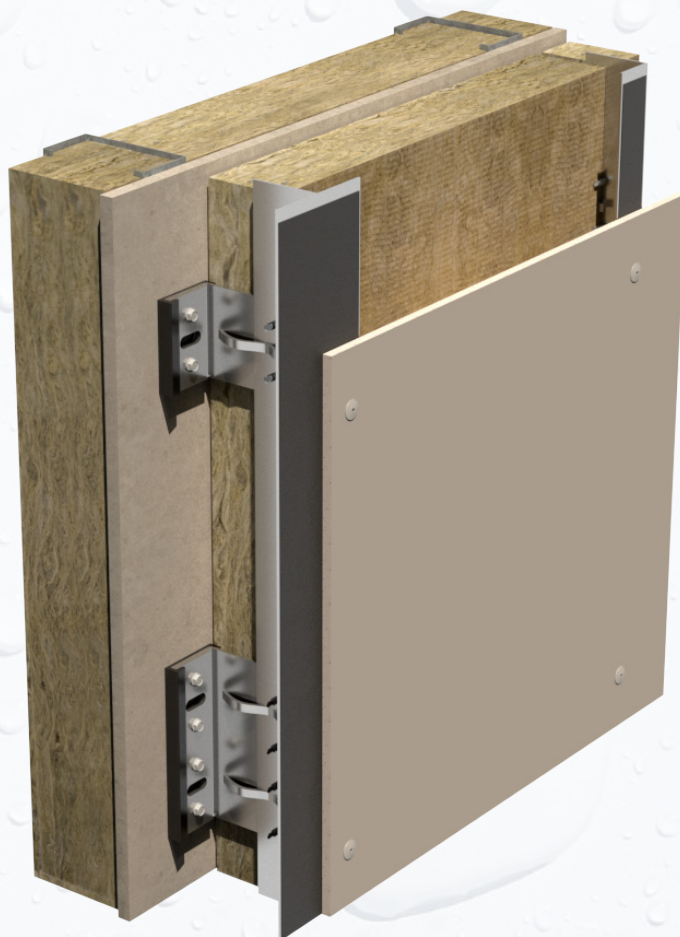


Double bracket on to steel frame

Rivet fix system



On to concrete

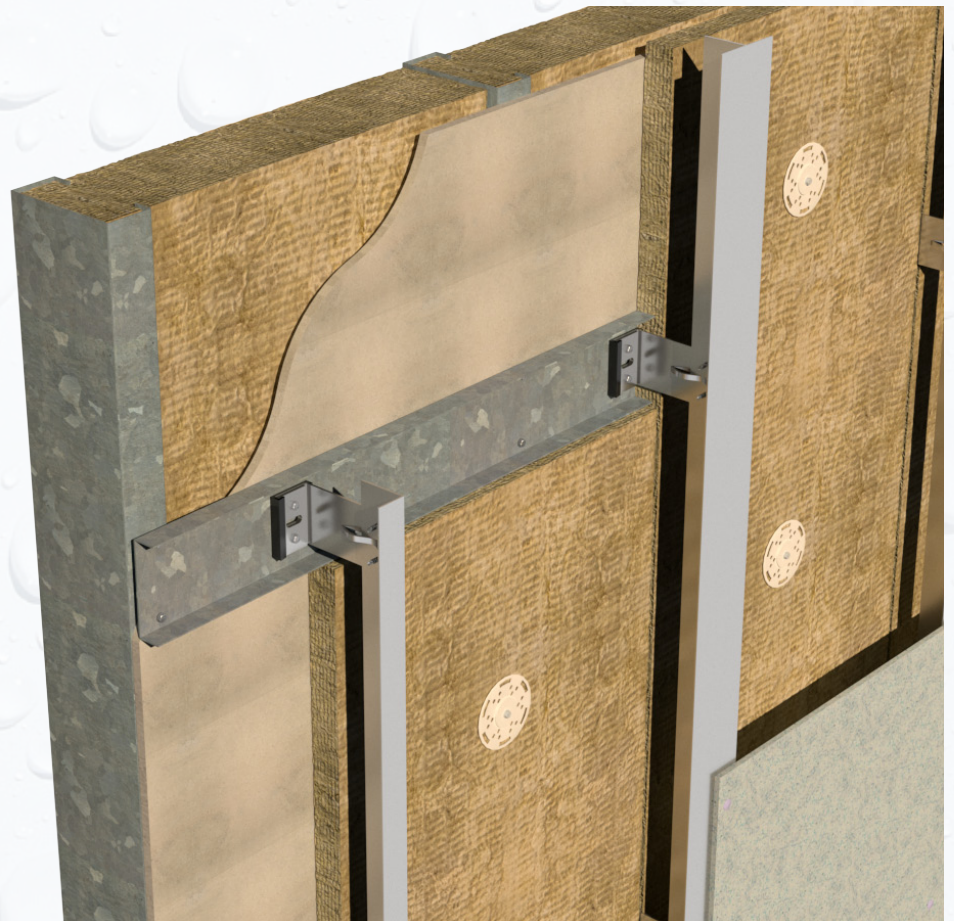


On to light steel frame

Horizontal Channel supports



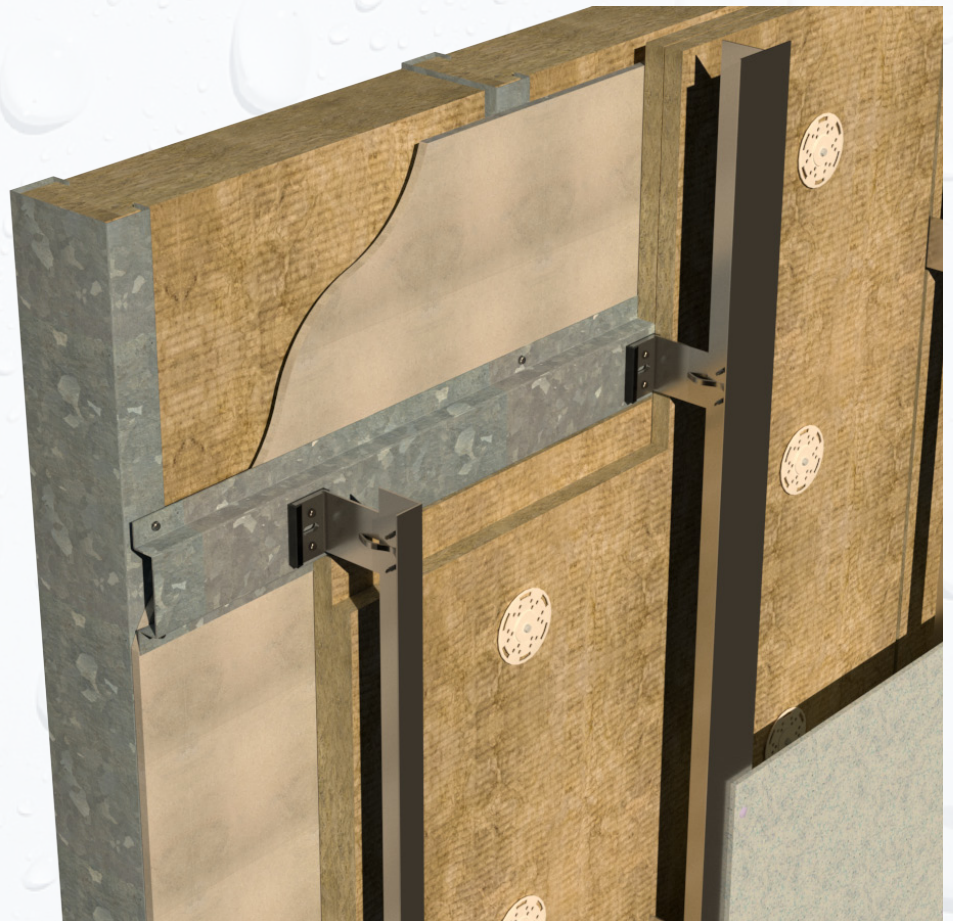
C Channel to support brackets when the panel layout does not line up with the studs. Used for lighter panel systems.

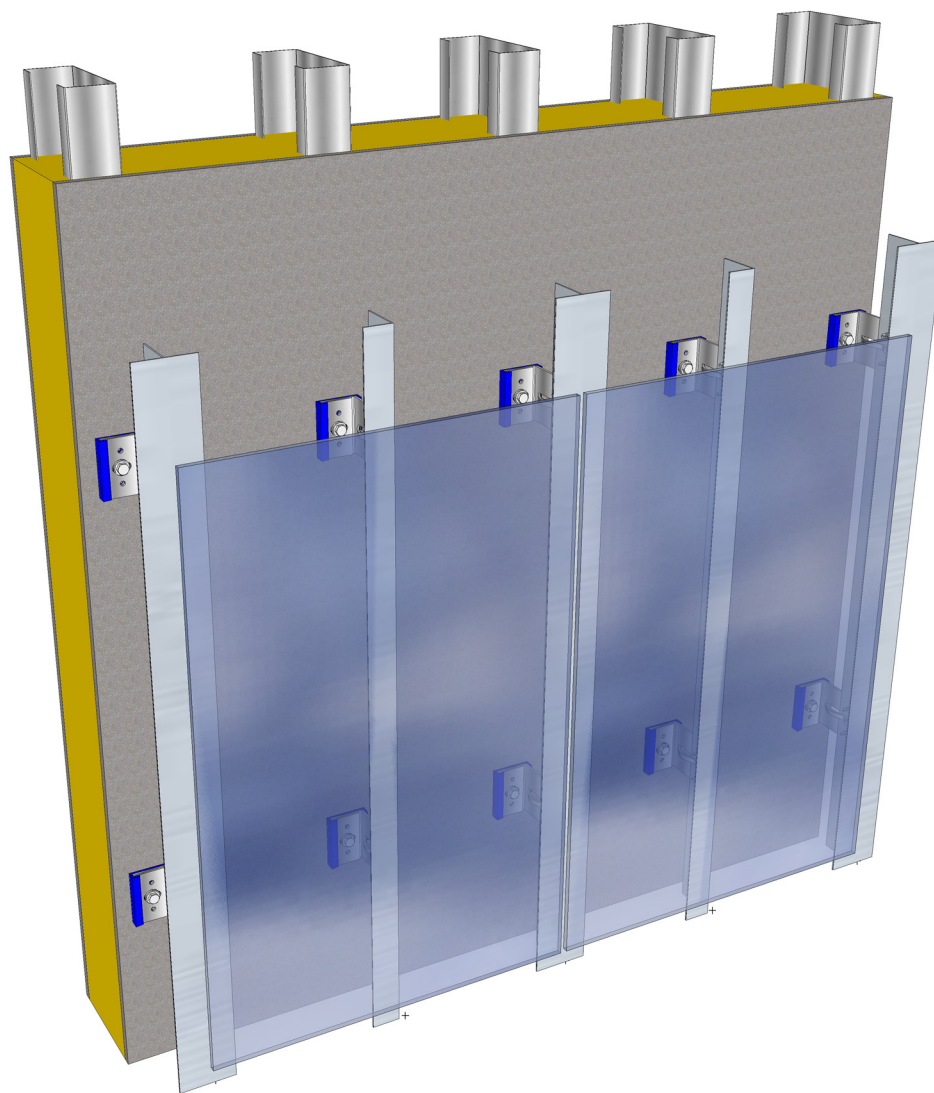


Horizontal top hat support



C Channel to support brackets when the panel layout does not line up with the studs. Used for heavy panel systems.

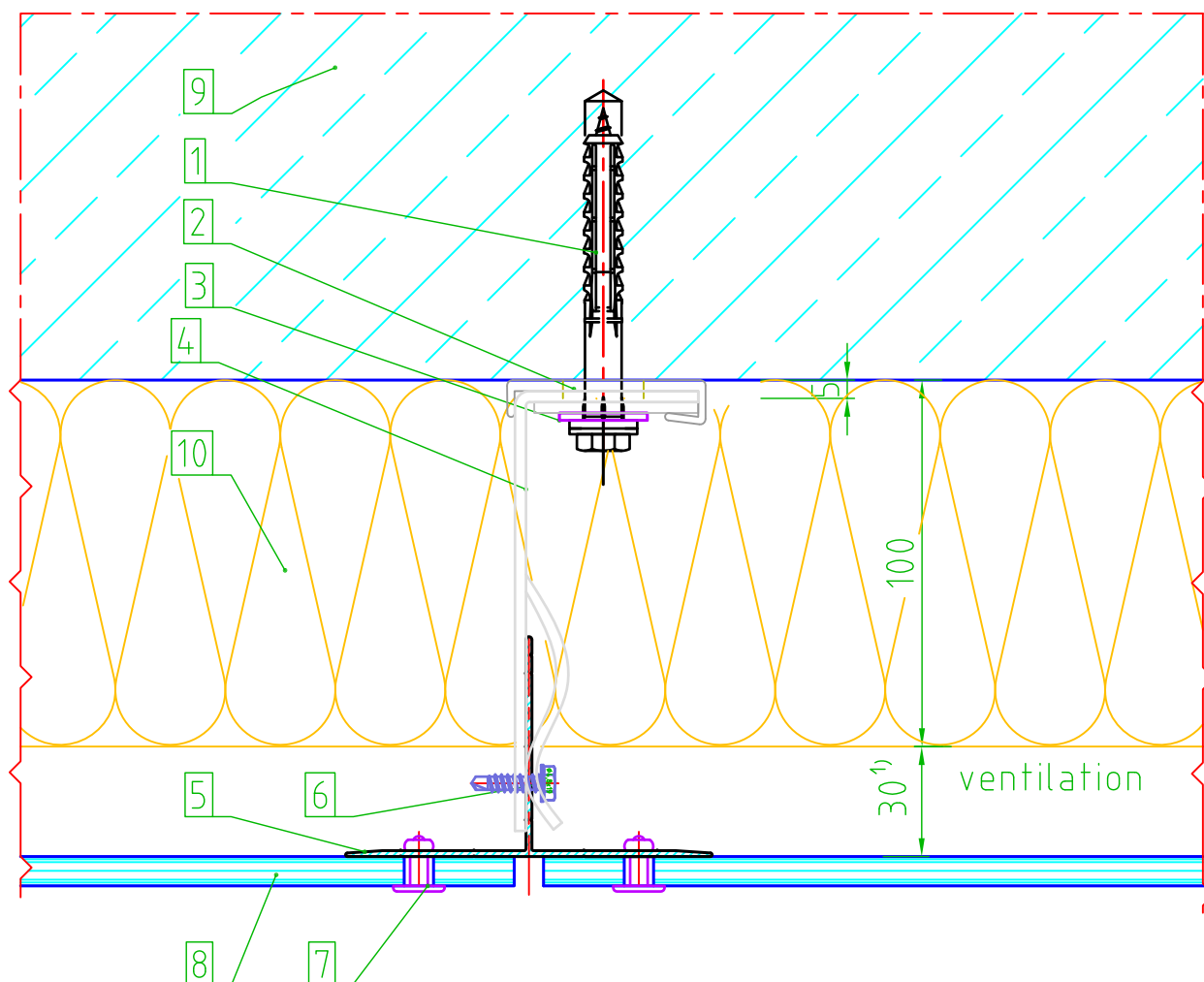


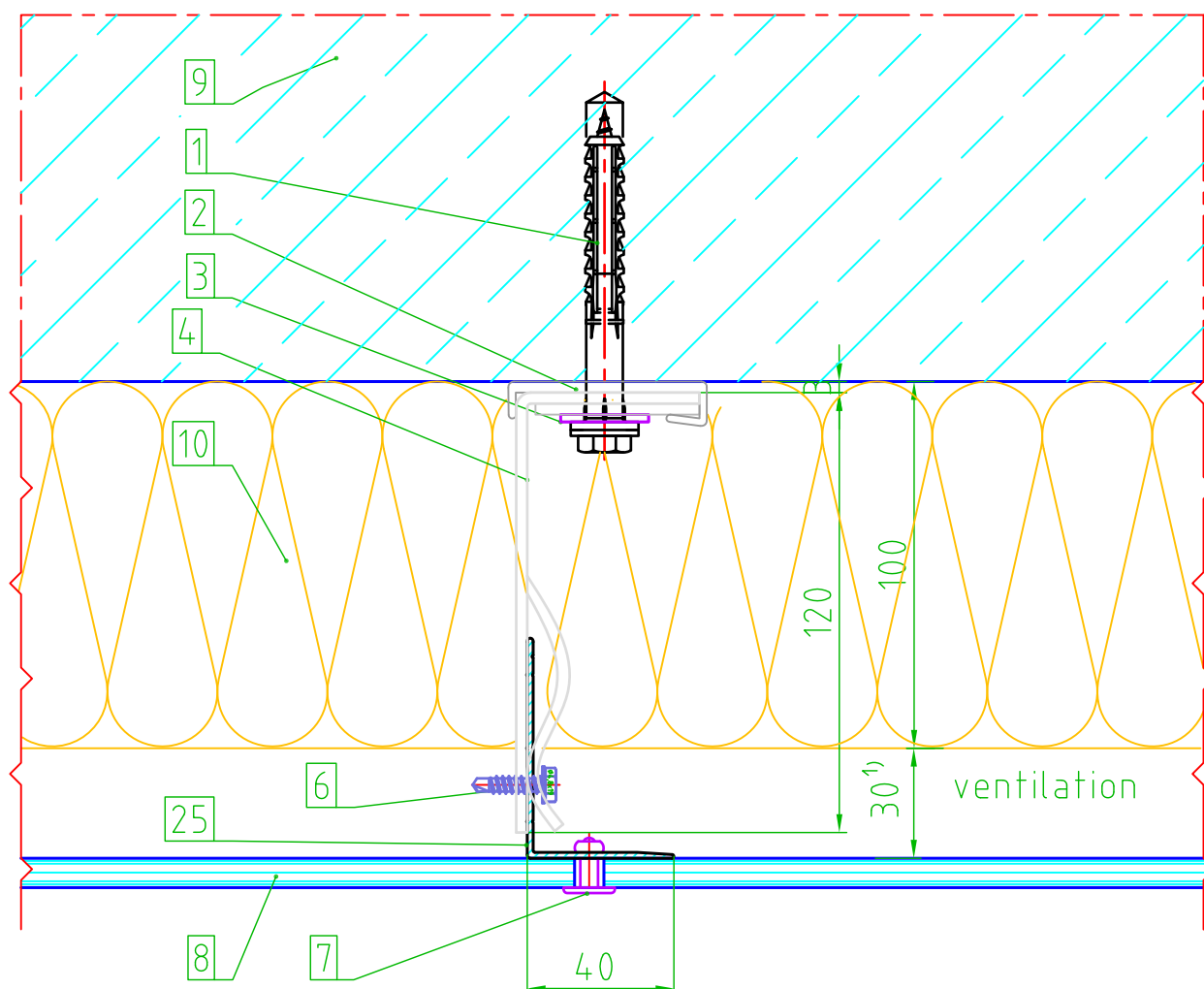


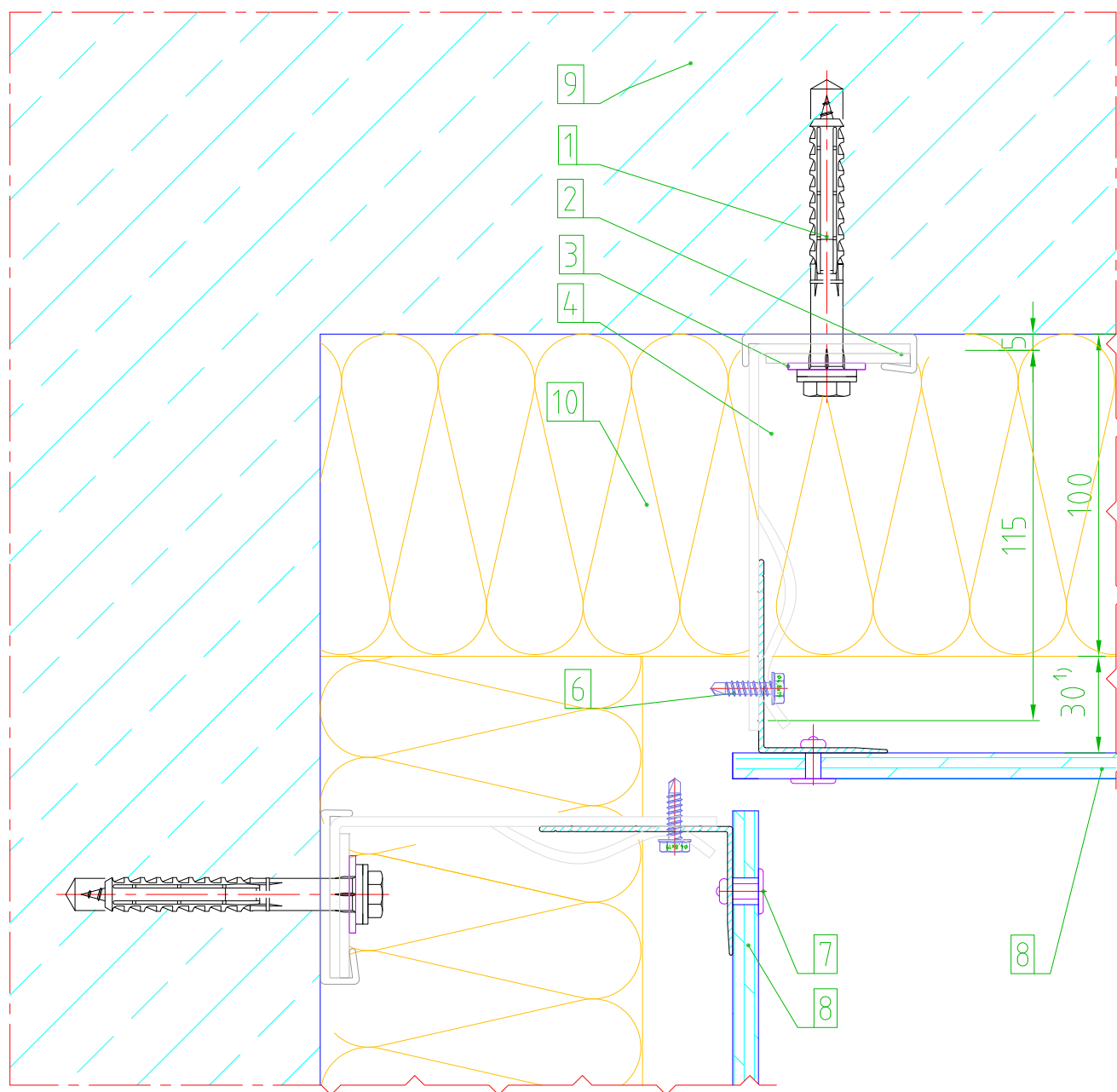
FastFrame

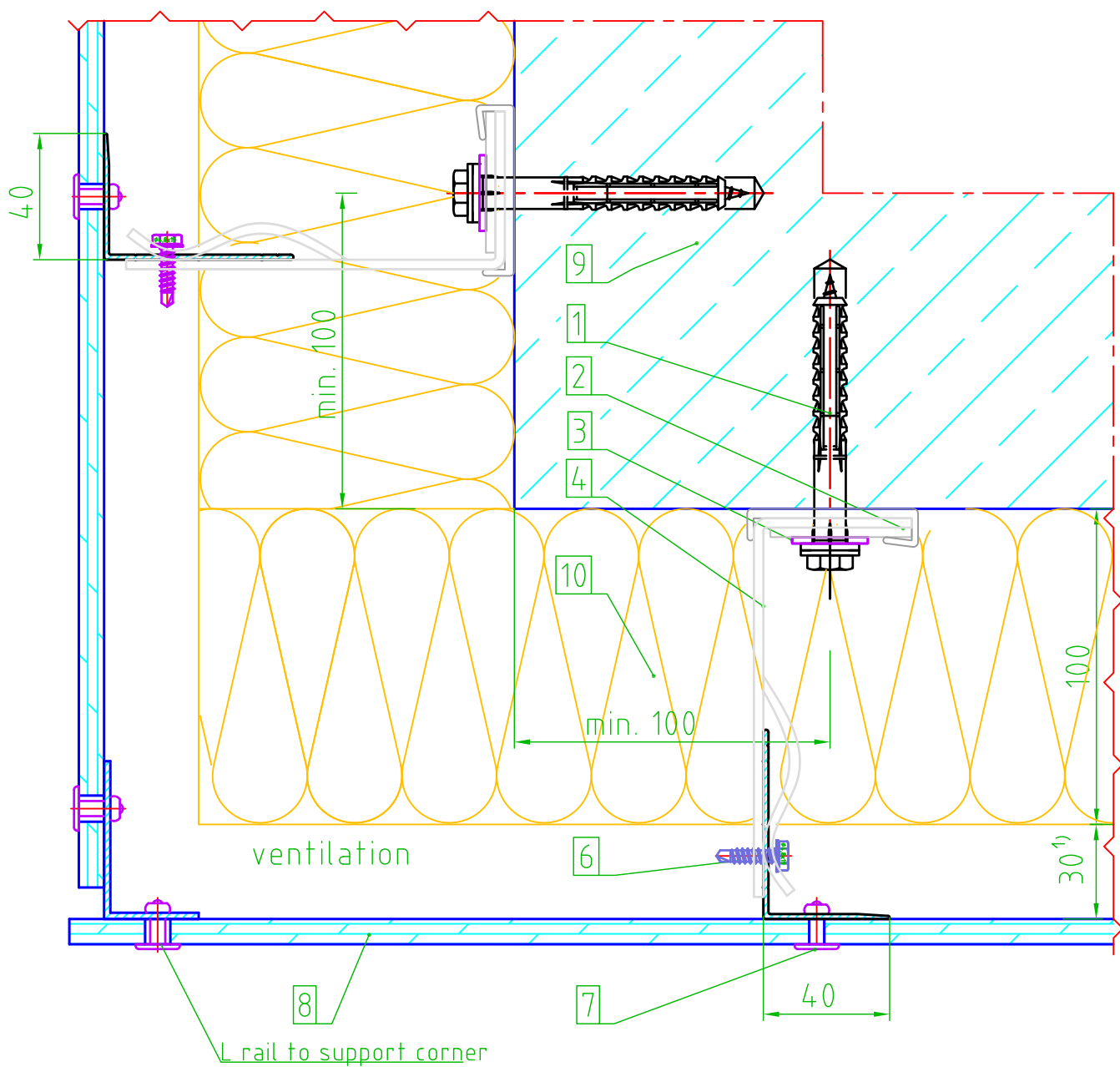
Legend

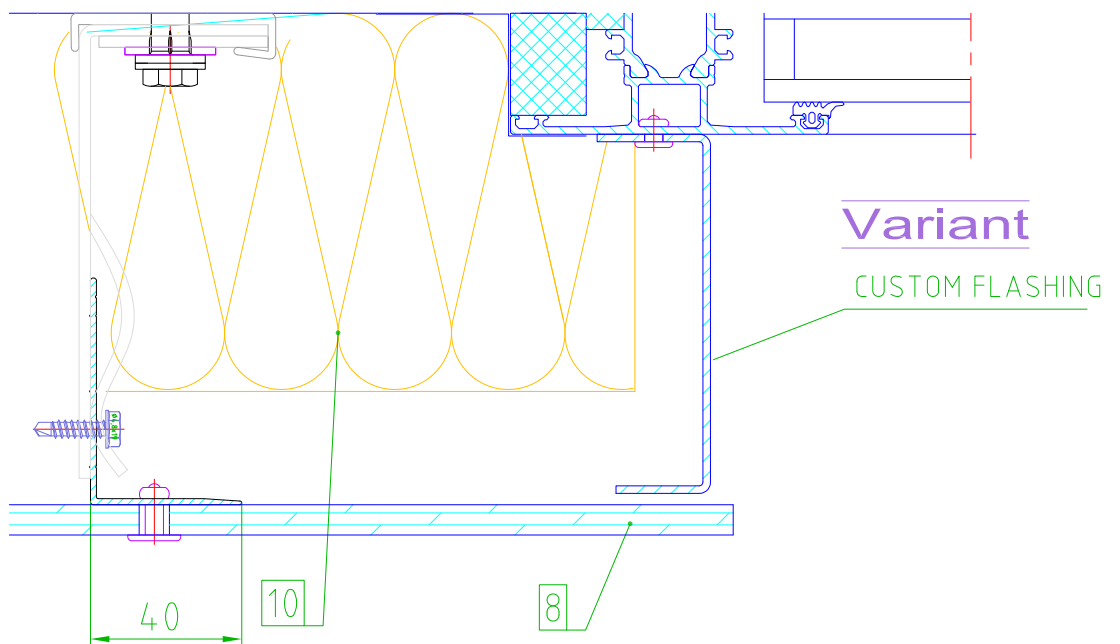
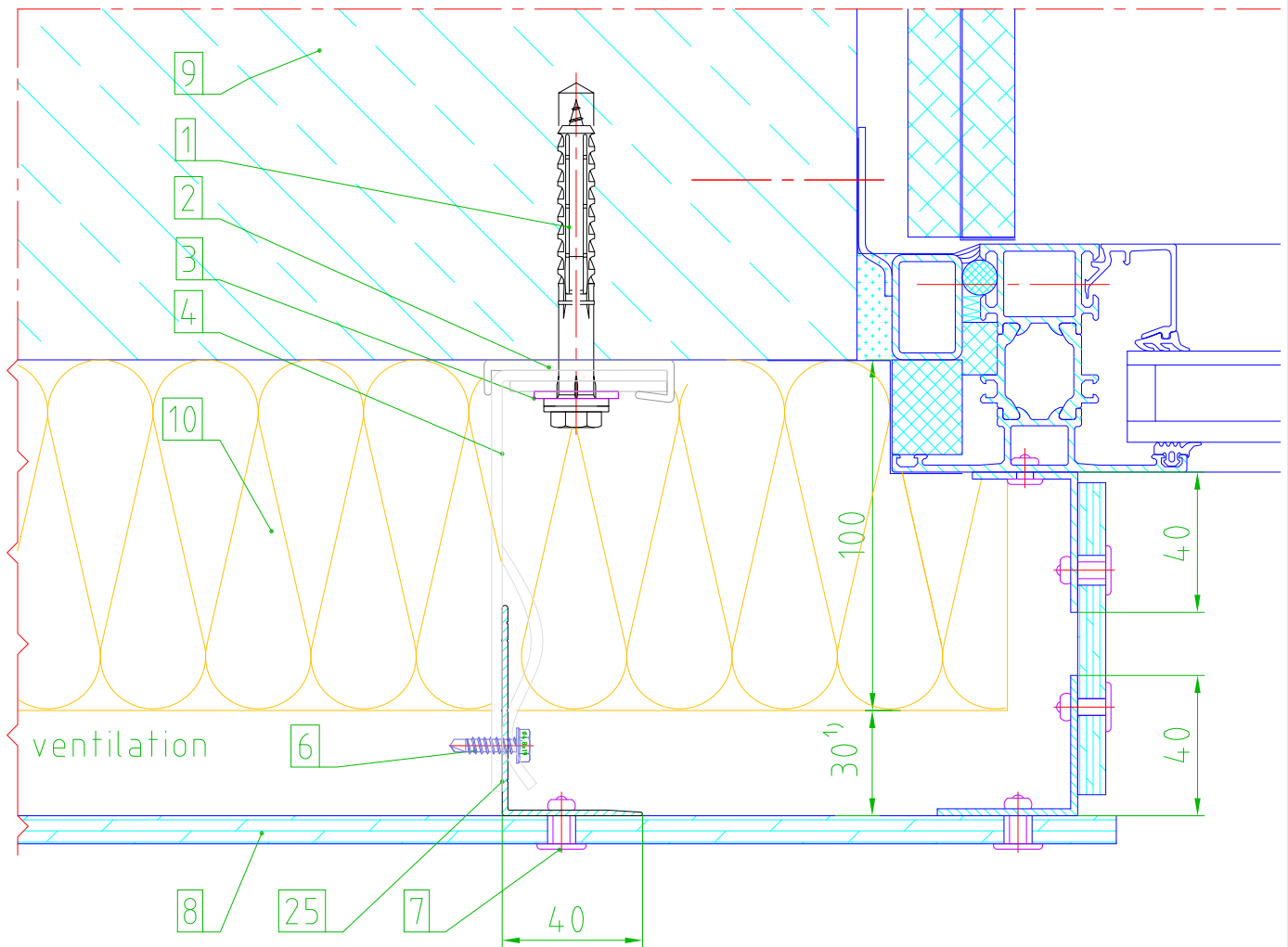
1	Bracket to wall anchor
2	Isolator pad pad 3mm thick
3	special washer (optional)
4	Double FastFrame bracket
5	vertical T-profile
6	Stiching screw, stainless
7	rivet in accord. panel producer
8	cladding panel
9	wall of building (e.g. concrete)
10	insulation
11	SIKA adhesive system "Tack-Panel"
22	Hanger bracket
23	Panel level adjusting bolt
24	Horizontal 'C' hanger support rail
25	vertical L-profile 40x60
36	Single FastFrame bracket
37	Hanger bracket to panel fastener

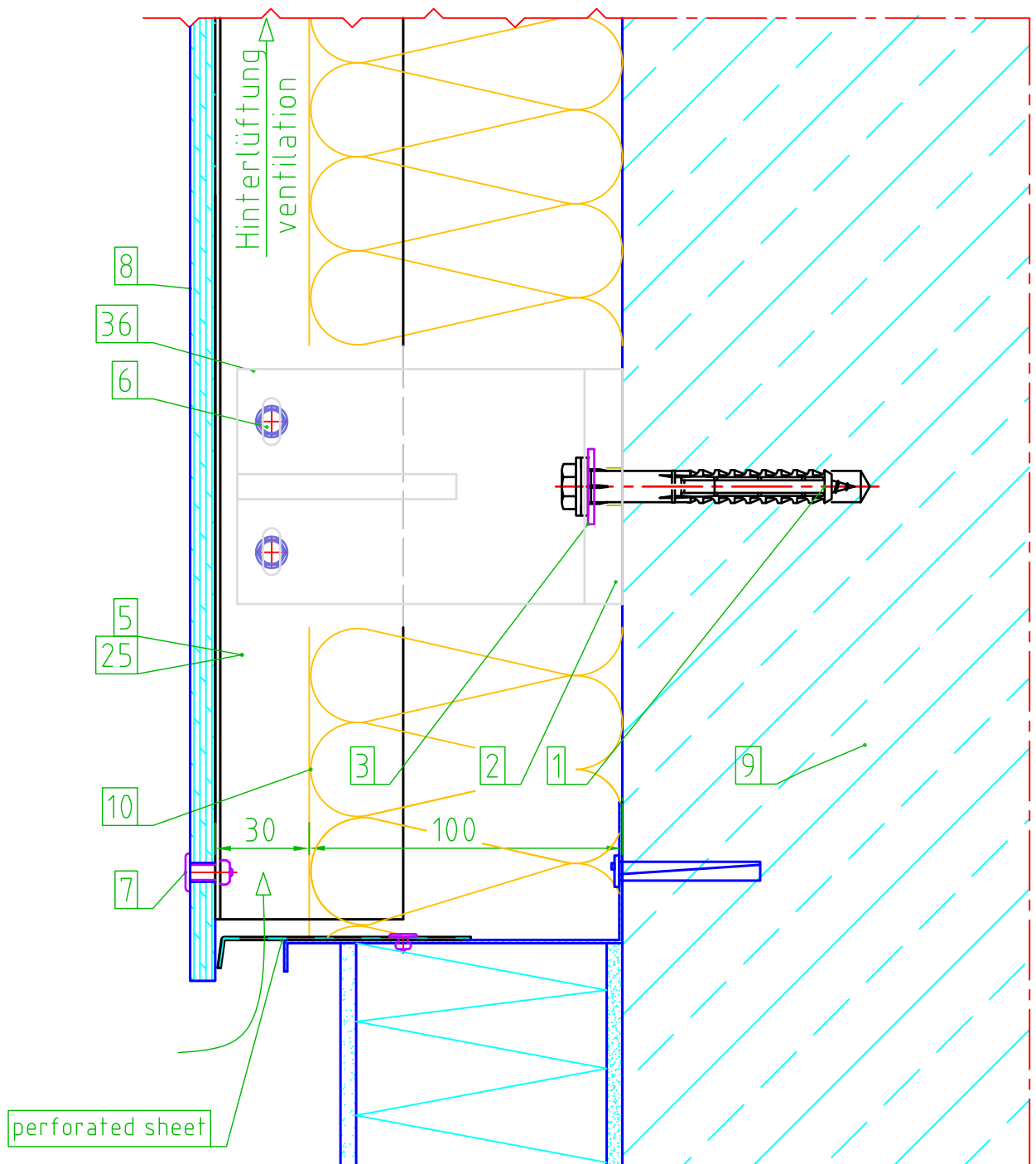


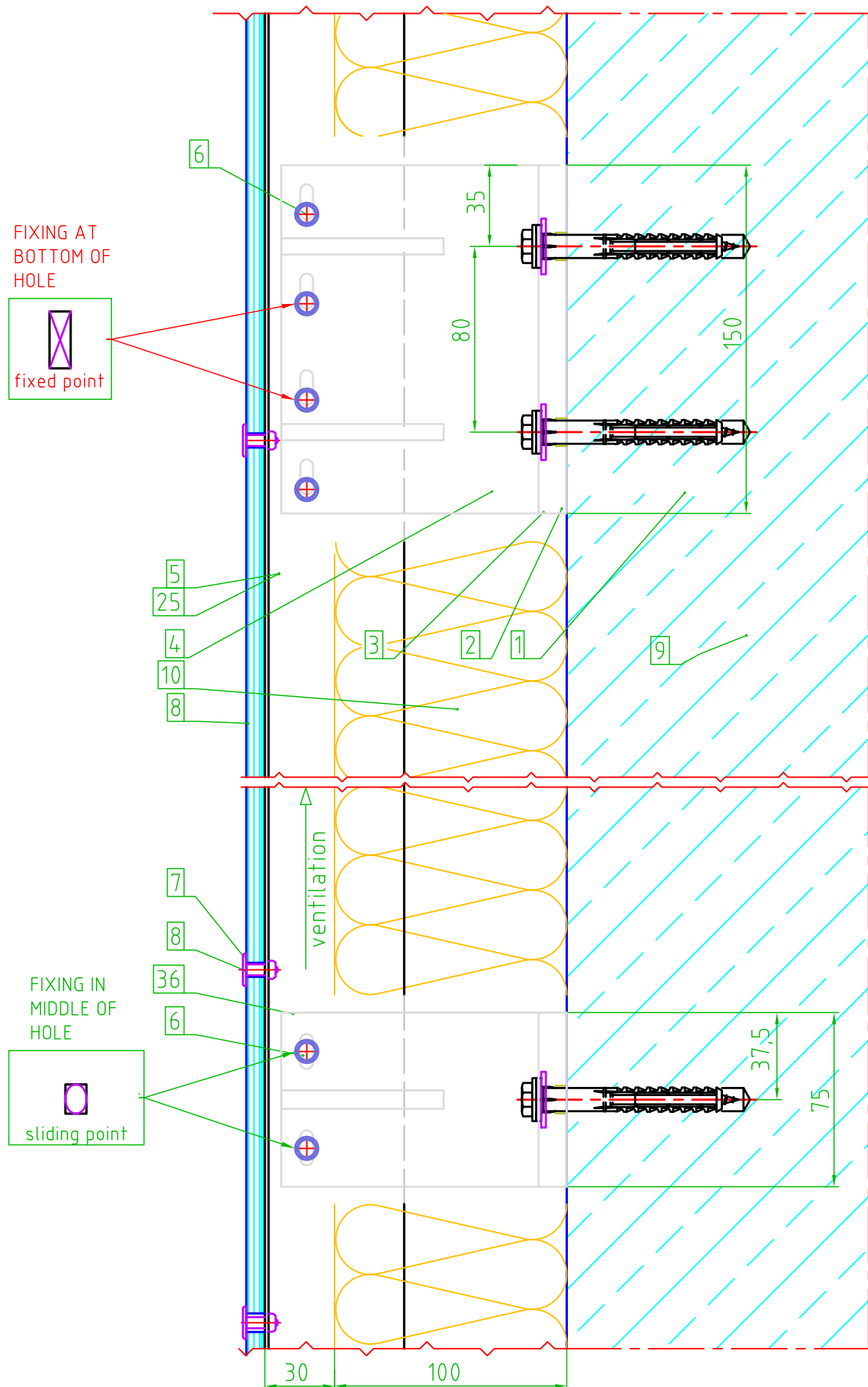


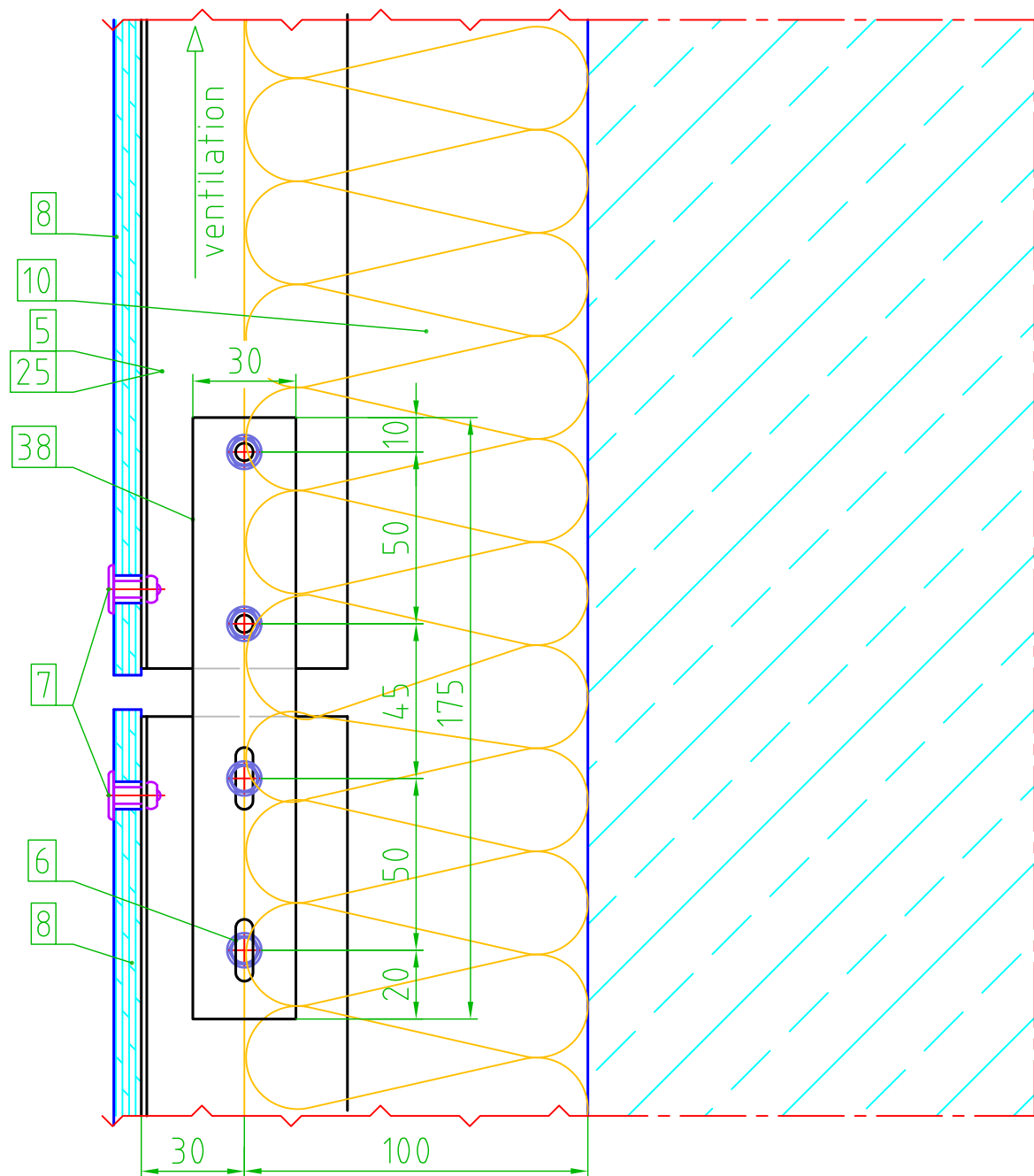




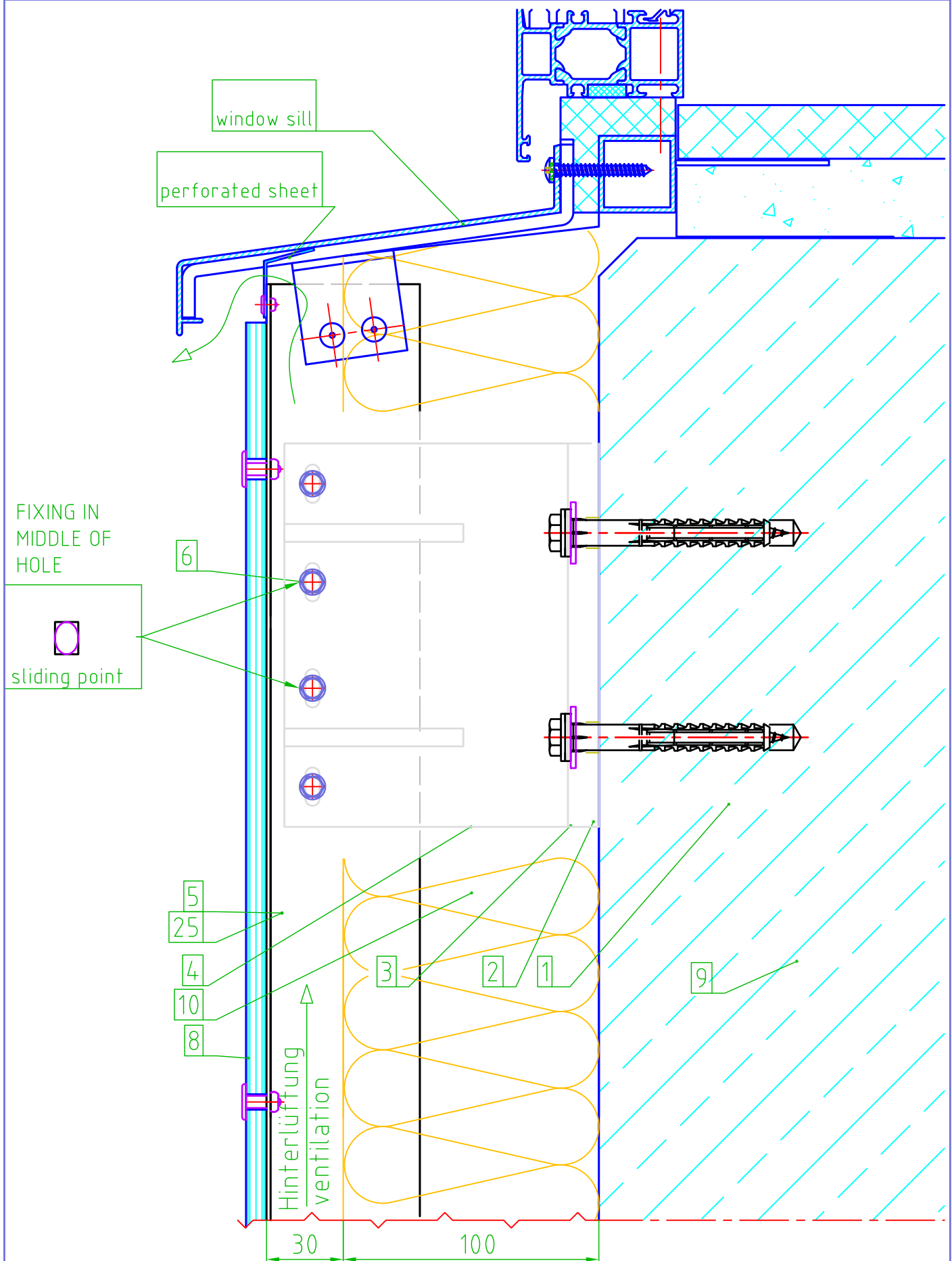


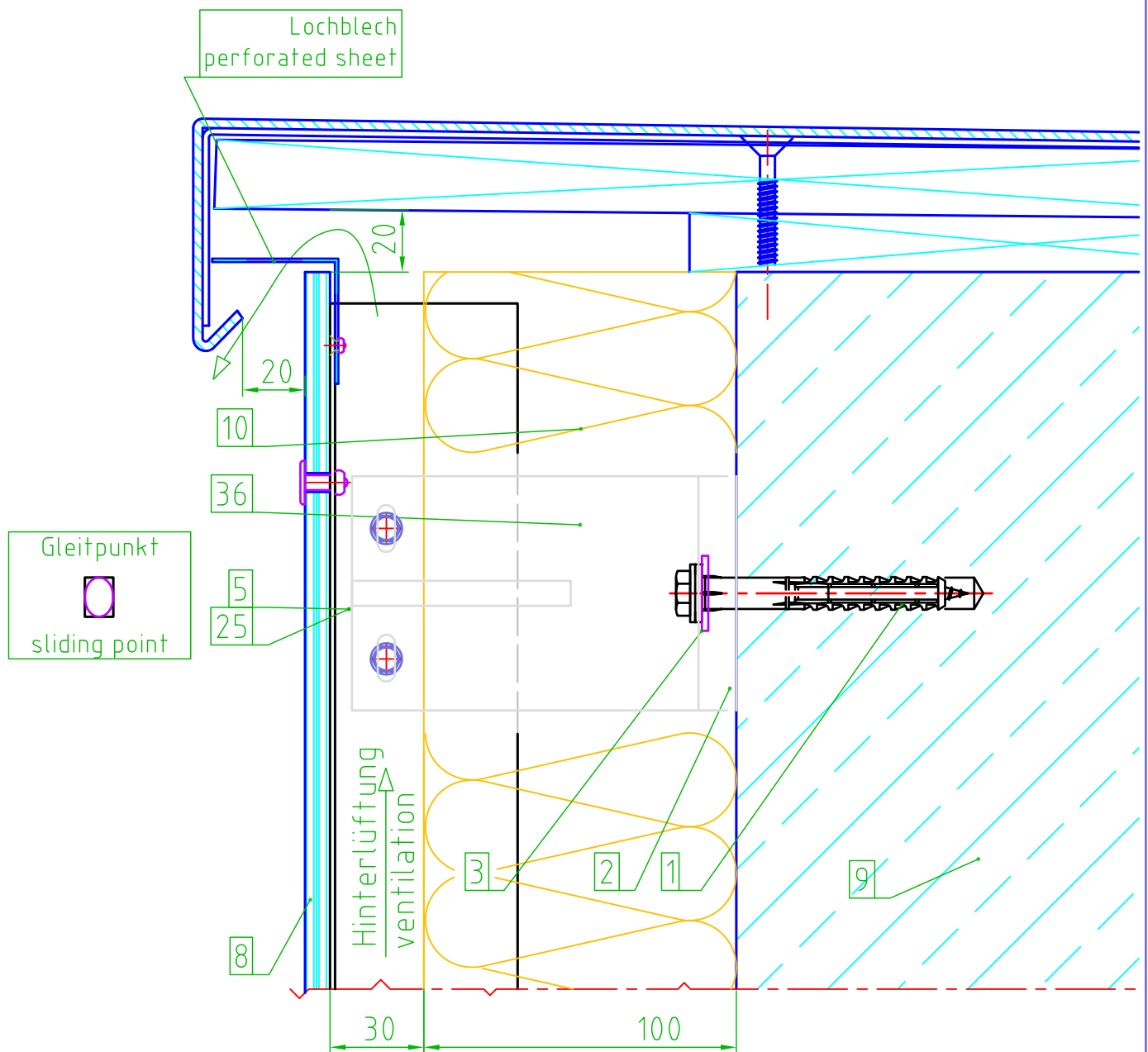












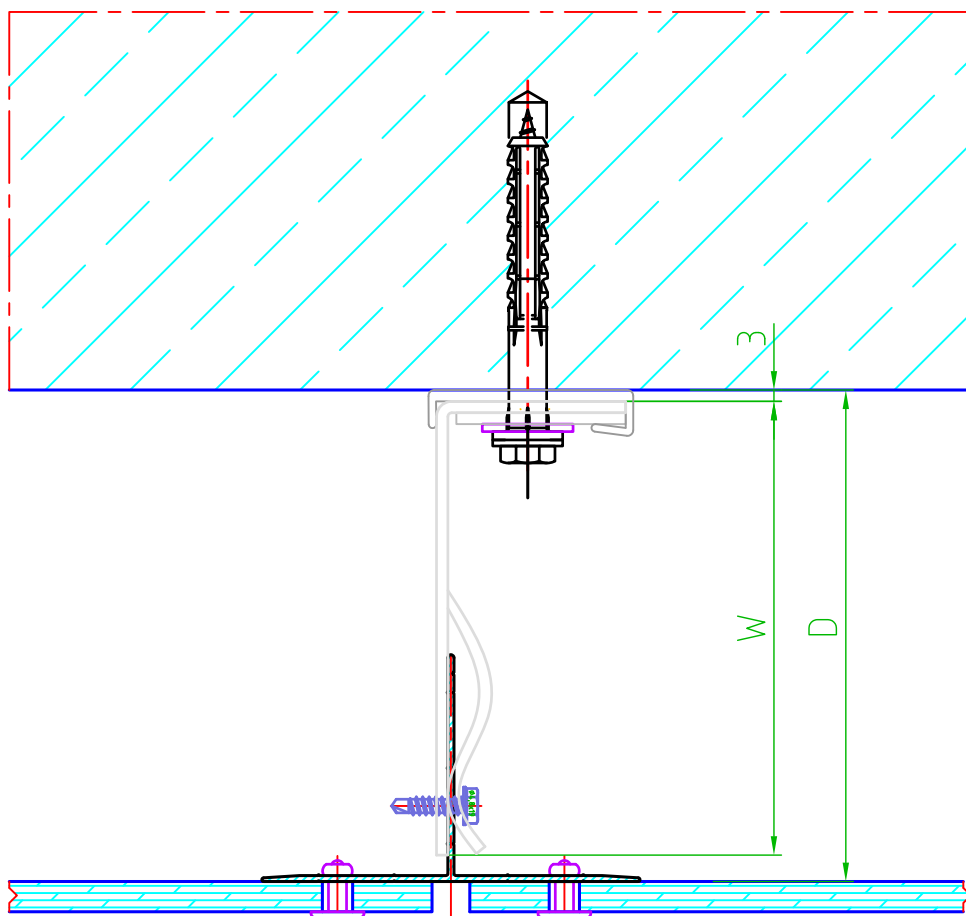


Table of Distances

SINGLE BRACKET	DOUBLE BRACKET	BRACKET SIZE (W)	CAVITY RANGE (D)
FF/FIX/BR/65	FF/FIX/BRD/65	65mm	80mm - 105mm
FF/FIX/BR/80	FF/FIX/BRD/80	80mm	88mm - 120mm
FF/FIX/BR/100	FF/FIX/BRD/100	100mm	108mm - 140mm
FF/FIX/BR/120	FF/FIX/BRD/120	120mm	128mm - 160mm
FF/FIX/BR/140	FF/FIX/BRD/140	140mm	148mm - 180mm
FF/FIX/BR/160	FF/FIX/BRD/160	160mm	168mm - 200mm
FF/FIX/BR/180	FF/FIX/BRD/180	180mm	188mm - 220mm
FF/FIX/BR/200	FF/FIX/BRD/200	200mm	208mm - 240mm
FF/FIX/BR/220	FF/FIX/BRD/220	220mm	228mm - 260mm
FF/FIX/BR/240	FF/FIX/BRD/240	240mm	248mm - 280mm

OTHER BRACKET SIZES ARE AVAILABLE