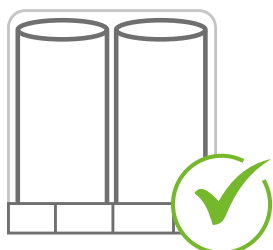
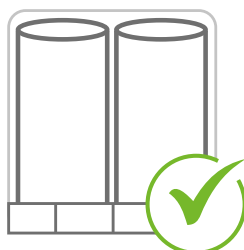


This guide highlights best practice in the storage, handling, and installation of Superglass Timber & Rafter products in external timber frame walls, warm pitched roofs, and suspended timber floors.

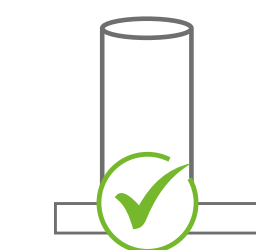
How to store our insulation



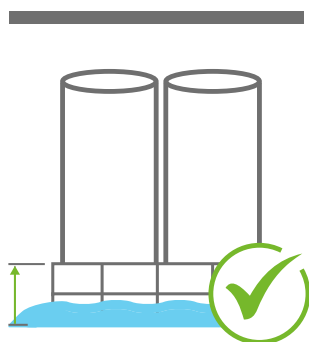
Keep the product covered and fully wrapped on a pallet until required.



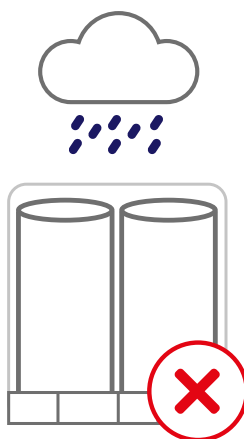
A pallet that is wrapped and has an undamaged hood can be stored outside when indoor space is unavailable, provided it is kept off the ground and protected from the elements. This should only be for short-term storage and not in severe weather conditions.



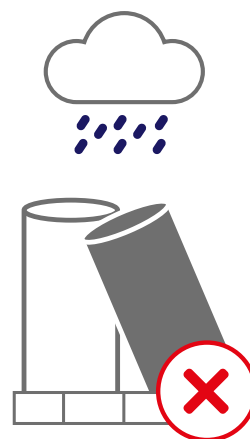
Once the plastic hood has been removed keep all of the product inside and off the ground away from the elements.



Product should be kept elevated on a pallet at all times to avoid sitting water.



Product can become wet and damaged when exposed to the elements.



Loose product is extremely likely to have water damage when left in the rain rendering your stock unfit for sale.

Please note: This guide is suitable for all Superglass roll, slab and batt products. We do not recommend that Superglass pallets are double stacked.

Health & Safety

“The mechanical effect of fibres in contact with skin may cause temporary itching”



Cover exposed skin. When working in unventilated areas wear disposable face mask.



Clean area using vacuum equipment.



Waste should be disposed of according to local regulations.



Rinse in cold water before washing.



Ventilate working area if possible.



Wear goggles when working overhead.

Please refer to product Material Safety Datasheet (MSDS) for more information.

Measuring & cutting

Using a tape measure, measure the internal aperture of the frame, rafter or joist you are fitting the insulation into. Note that frame centre measurements (i.e. 600mm) include the thickness of the stud or joist/rafter, and that they may not always be consistent, so it is best to measure the internal aperture accurately to ensure the best possible fit.

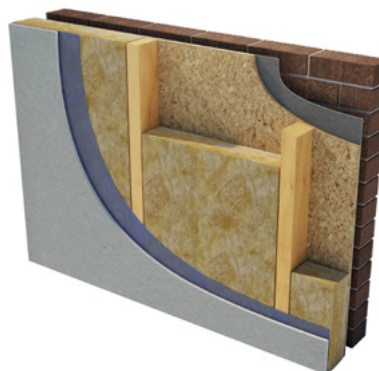
Use an insulation saw or a serrated knife to cut the insulation to size, avoid overcutting.

Installation

The typical installation procedures involve the following steps:

External Timber Frame Wall

- The timber frame, Oriented Strand Board (OSB) or plywood sheathing, and breather membrane are all installed in accordance with the manufacturer's instructions.
- The external finish, whether it be brickwork, tile hanging, or external render blockwork, is then installed in accordance with the manufacturer's instructions.
- Superglass Timber & Rafter products are carefully installed between the studs, making sure the insulation is flush with the depth of the studs. Their dimensional stability ensures a secure friction fit.
- Make sure there are no visible gaps, as this will negatively affect the installed performance.
- The internal lining of air and vapour control layer (AVCL) and plasterboard are then fixed in accordance with the manufacturer's instructions.

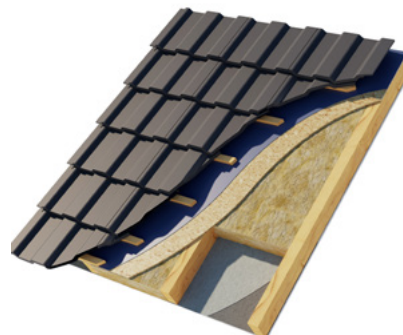


Notes:

The insulation should not be compressed excessively as the fibres will be damaged leading to a loss of thickness and performance. If damage does occur, replacement material must be installed.

Warm Pitched Roof (Rafter Level)

- Install the roofing tiles, battens, membranes, Oriented Strand Board (OSB) or sheathing boards in accordance with the manufacturer's instructions.
- Once the roof is watertight, install the Superglass Timber & Rafter products between the rafters from the inside. Ensure the insulation is flush with the depth of the rafters. Their dimensional stability provides a secure friction fit.
- Make sure there are no visible gaps, as this will negatively affect the installed performance.
- Ensure that any penetrations through the ceiling, particularly those made by subsequent trades, are properly sealed to maintain an air and vapour tight ceiling.
- The plasterboard & air and vapour control layer (AVCL), is installed, in accordance with the manufacturer's instructions.

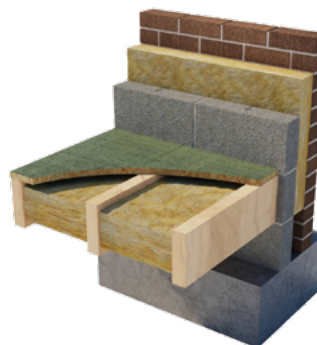


Notes:

The insulation should not be compressed excessively as the fibres will be damaged leading to a loss of thickness and performance. If damage does occur, replacement material must be installed.

Suspended Timber Ground Floors

- Fit the floor joists in the normal manner and in accordance with the manufacturer's instructions.
- Staple suitable netting to sides of joists to support the insulation.
- Superglass Timber & Rafter products are snugly fitted between the joists, ensure the insulation is flush with the depth of the joists. Their dimensional stability provides a secure friction fit.
- Make sure there are no visible gaps, as this will negatively affect the installed performance.
- Install the floor deck (chipboard, timber boarding etc) in accordance with the manufacturer's instructions.



Notes:

The insulation should not be compressed excessively as the fibres will be damaged leading to a loss of thickness and performance. If damage does occur, replacement material must be installed.

Packaging & Waste Material

All our product packaging is made from low-density polyethylene (LDPE4) plastic, which is completely recyclable. Before attempting to recycle our product packaging, please consult your local authority.

Superglass insulation products can be recycled but Superglass do not have the facilities to recycle these products. Therefore, any waste product should be disposed of to landfill in accordance with local waste disposal regulations.

Technical

Hotline: **0808 1645 134**
Email: technical.stirling@etexgroup.com

Customer Services

Tel: **01786 451170**
Email: customerservice.stirling@etexgroup.com

Social

✕ [superglass_uk](#)
in [superglassuk/](#)
f [superglassinsulationuk](#)