

Swisspearl Patina NXT

Version: 12/25

External and internal wall and ceiling coverings

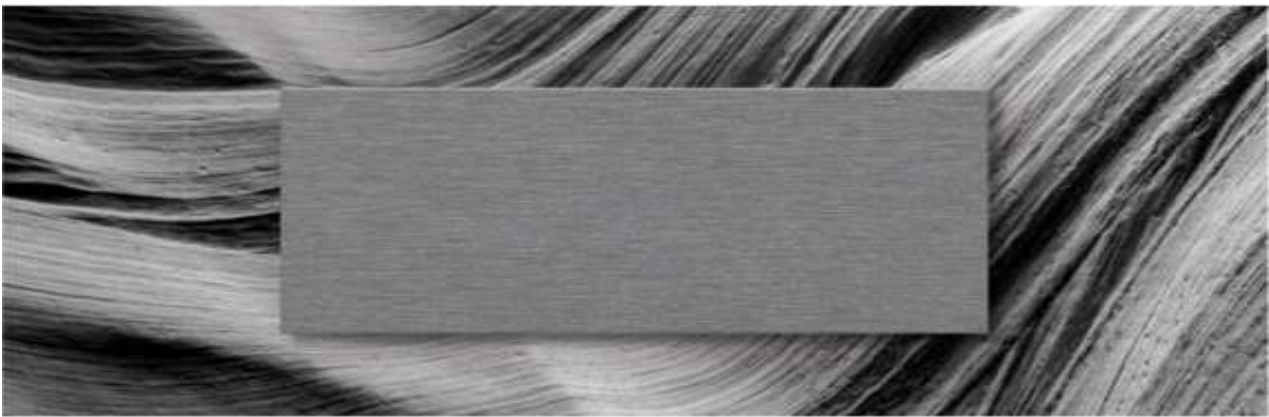
EN 12467

Patina Original NXT | Patina Rough NXT | Patina Structure NXT

Swisspearl Patina Original NXT has fine sanding lines on the surface. It comes in timeless colours, evolves and changes the expression of your building. These façade boards will patinate beautifully over time, adding an aesthetic look to the building design with some unique and subtle variations on the surface.

Swisspearl Patina Rough NXT is a rustic fibre cement board with a tough, textured surface. Behind its rugged exterior is the steady core of high-quality fibre cement – a material ideal for exterior and interior façades. Patina Rough NXT is a genuinely through-coloured board with a sand-blasted surface that gives an attractive, stone-effect finish to your building design.

The surface of *Patina Structure NXT* reveals a refined, natural rhythm created by subtle linear grooves. As light grazes the material, fine and versatile shadows dance across the texture, enhancing the architectural depth of each panel.



Visual Appearance

The colour of the product derives from the raw materials used in its production, resulting in natural variations both within a single panel and between panels. Its distinctive surface creates an atmospheric play of shadows that shifts with the time of day and viewing angle. The panels demonstrate resistance to ageing and chemicals comparable to unreinforced concrete, and their performance is unaffected by normal salted air environments such as coastal areas. Each panel features a milled surface structure with a water-resistant hydrophobic coating, and the base panel is through-coloured. A palette of 11 through-coloured shades is available.

Shading

Deviations in colour shades, both within the product and from product to product, are a natural part of the production process and underline the vibrant, expressive character of the material. Colour variation is measured on the production line using the CIELAB colour model, in which only the lightness parameter ΔL is monitored:

$$\Delta L = \pm 2.5$$

Colour Range*

*Restrictions may apply please check homepage



Swisspearl Patina NXT

	Units	6 mm	8 mm	12 mm
Dimension (nominal)				
Width*	mm	1192	1192	1192
		1250	1250	1250
Length*	mm	2500	2500	2500
		3050	3050	3050

*For specific projects, the panels can be cut to custom dimensions.

Dimension tolerance (EN 12467, Level 1)

Thickness (up to 20 mm)	mm	± 0.6	± 0.8	± 1.2
Width (1000 mm < a < 1600 mm)	mm	± 0,3 % a	± 0,3 % a	± 0,3 % a
Length (1000 mm < a < 1600 mm)	mm	± 0,3 % a	± 0,3 % a	± 0,3 % a
Length (1600 mm < length)	mm	± 5.0	± 5.0	± 5.0

a is the nominal width or length

Physical properties

Density, dry minimum (EN 12467)	Kg/m ³	≥ 1400	≥ 1400	≥ 1400
Density, dry average (EN 12467)	Kg/m ³	1550	1570	1620
Weight (Nominal, mean)*	Kg/m ²	10.4	14.9	21.8
Moisture content	%	5-10	5-10	5-10

*Nominal values may vary depending on the conditions

Mechanical properties

Bending modulus of elasticity MOE (EN 12467)

E-module average, ambient	GPa	12.8	13.7	13.7
---------------------------	-----	------	------	------

Bending strength MOR (EN 12467)

Wet average (EN 12467)	MPa	35	36	36
Minimum Class A4 (EN 12467)	MPa	18	18	18

Colour

Colour variation (CIELAB colour model)	ΔL	-2.5 / +2.5	-2.5 / +2.5	-2.5 / +2.5
Colour resistance to UVA (3000 hrs)	ΔE	2.7	2.7	2.7

Environmental footprint (EN 15804, ISO 14040 / ISO 14044)		Original NXT 6, 8, 12	Rough NXT 6, 8, 12
GWP-total (A1-C4)	kgCO ₂ -eq	11.6 / 15.5 / 19.4	13.1 / 17.5 / 21.9
GWP-biogenic (A1-C4)	kgCO ₂ -eq	0.22 / 0.3 / 0.37	0.24 / 0.32 / 0.40
GWP-fossil (A1-C4)	kgCO ₂ -eq	11.4 / 15.2 / 19.0	12.9 / 17.2 / 21.5

Swisspearl Patina NXT

	Units	6 mm	8 mm	12 mm	
Thermal properties					
Coefficient of thermal expansion λ_{10}	mm/m °C	0.01	0.01	0.01	
Temperature (air) in use	°C	-40 +80	-40 +80	-40 +80	
Frost resistance (max. 100 cycles EN 12467)	RL	RL > 0,75	RL > 0,75	RL > 0,75	
Hygrothermal properties					
Water absorption (24 hrs 105 °C, 24 hrs in water)	%	< 25	< 25	< 25	
Moisture movement (30/90% RH, EN 12467)	%	0.07	0.07	0.07	
Moisture movement (wet-dry-wet)	mm/m	1.8	1.8	1.8	
Water vapour transmission properties (EN 12572-C)					
Water vapour transmission resistance (Z-value)	GPa m ² s/kg	2.4	2.5	1.8	
Water vapour transmission resistance (Z-value)	s/m	17700	18500	NA	
Water vapour diffusion equivalent air layer thickness	Sd(m)	0.5	0.5	NA	
Water vapour resistivity	MN s/gm	366	327	320	
Water vapour resistance factor	μ	58	58	NA	
Water vapour resistance	MN s/g	2.4	2.5	NA	
Water vapour transmission	USPerm	7.2	7.0	NA	
Fire performance					
Reaction to fire (EN 13501-1)	Rating	A2-s1, d0	A2-s1, d0	A2-s1, d0	
Behaviour of materials at 750 °C (ASTM E 136)		N/A	Passed	Passed	
External thermal insulation for walls (BS 8414-2-2015 + A1-2017)*		N/A	Passed	Passed	
*Installation principles determine the classification, contact product compliance for further information					
Other properties					
Category, class (EN 12467)		NT A4 I	NT A4 I	NT A4 I	
M1-Classification, VOC emission, EN 16516:2017 + A1:2020		Approved	Approved	Approved	
REACH (EC) No. 1907/2006		Compliant	Compliant	Compliant	
Impact resistance test (EAD 090062-01-0404) 8 mm, 12 mm					
		Category IV	Category II	Category II	Category I
Hard body	1 Joule	Passed			
	3 Joule		Passed	Passed	Passed
	10 Joule			Passed	Passed
Soft body	10 Joule	Passed	Passed		
	60 Joule			Passed	Passed
	300 Joule			Passed	
	400 Joule				Fail
Evaluation		Passed	Passed	Passed	Fail
Impact end use category (EAD 090062-01-0404)			9.5 / 8 mm Category II-a*		
*Installation principles determine the classification, contact product compliance for further information					

Swisspearl Patina NXT

PATINA ORIGINAL NXT

PATINA ROUGH NXT

PATINA STRUCTURE NXT



Certifications

In compliance with European Regulation No. 305/2011 (Construction Products Regulation – CPR), the manufacturer provides a Declaration of Performance (DoP) for the product, confirming that it bears the CE marking. This marking indicates that the product meets the essential requirements set out in the relevant harmonized European standard. The Declaration of Performance, issued under the CPR, is available at www.swisspearl.com.



Patina Structure NXT will be launched in all certifications.

ISO 9001:2015 QMS Certification

ISO 14001:2015 EMS Certification

ISO 45001:2018 OHSM Certification

Disclaimer

This Technical Data Sheet reflects typical values based on current production. While we aim to maintain consistent quality, minor variations may occur. Please note that all values have an AQL level and a tolerance, also in relation to EN 12467. Key performance indicators (KPIs) are monitored and reviewed annually to ensure product reliability and continuous improvement.

The information is provided as a general guide and may be updated without notice. We recommend validating the product for your specific application before use, e.g., compatibility between Swisspearl products, including the Swisspearl fixing system (if any), and any underlying support system or support structure.

The material is made from natural raw materials; each individual fibre-cement product has its own unique look and texture. Spots, inclusions, impurities, and irregularities can occur, such as uneven surfaces or textures, which are part of the product's appearance. The product's appearance does not affect the strength and durability of fibre-cement products. Over the years, the appearance of fibre-cement products will change as a result of exposure to environmental factors. Note: If any recipe or production process changes, the verification period is revised accordingly.

The specifications are not exhaustive, and Swisspearl's local general guidelines regarding installation must always be taken into account.

The values given are typical values.

*at the bottom of the section

NA: Not applicable

NR: Not relevant

NOTE: All values given in this document are taken from nominal dimensions, tolerance will apply