

rendaboard®



Direct Render Base Board

weber
SAINT-GOBAIN

KNAUFMARMORIT

K REND

wetherby
creating a greener future

PAREX
Render Systems and
Façade Solutions

dryvit

RENOTEX
PROPERTY MAINTENANCE &
RENOVATION PRODUCTS

Why Use Rendaboard®?

Rendaboard® is a modern practical construction material of outstanding performance. It is non-toxic, contains no hazardous volatiles and is asbestos and formaldehyde free.

Euroform have worked extensively with leading coating manufacturers to test and approve the compatibility of Rendaboard® with a variety of polymeric coating systems for direct render applications.

Designed specifically for direct render applications, Rendaboard® is off-white in colour and has a textured face to one side for thin polymeric render applications (unless otherwise advised).



ONE OF THE MOST WIDELY USED BASE BOARDS FOR APPLYING DIRECT RENDER POLYMERIC COATINGS

Benefits & Features

- Fully external/internal
- Pull-out tests available
- Resistant to attack against vermin
- Non-toxic under fire
- Fire rated
- Rot resistant
- Impact resistant
- Excellent dimensional stability
- Good acoustic performance
- Suitable for lightweight steel timber frame systems
- Textured face

Resistant to



ONE OF THE MOST WIDELY USED BASE BOARDS FOR APPLYING DIRECT RENDER POLYMERIC COATINGS

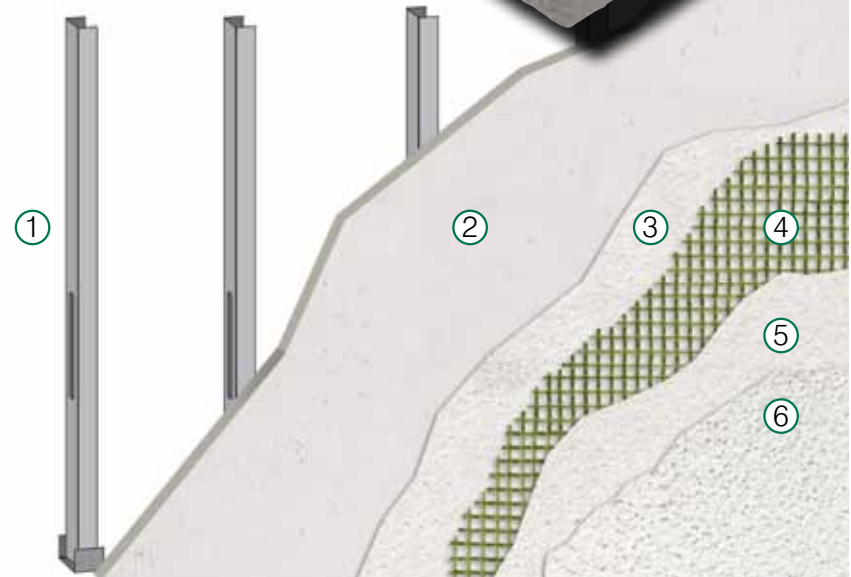
Applications

Rendaboard® is suitable for a wide range of applications and meets stringent demands for ever-increasing building regulations for ever-higher standards of durability, safety and economy.

- Timber frame structures
- Steel frame structures
- Renovation
- New build
- Sheathing boards
- Infill panels
- Carrier panels
- Backer panels

KEY

- ① STEEL STUD
- ② RENDABOARD®
- ③ RENDER BASE COAT
- ④ REINFORCING MESH
- ⑤ EXTERNAL BASE COAT
- ⑥ FINAL RENDER



Example of Rendaboard Steel Stud

ONE OF THE MOST WIDELY USED BASE BOARDS FOR APPLYING DIRECT RENDER POLYMERIC COATINGS

Technical Data

| | Rendaboard® | Rendaboard® A1 |
|------------------------------|---------------------------|--|
| Thickness (mm) Size | 9mm/12mm 2400 x 1200mm | 9mm/12mm 2400 x 1200mm |
| Dimensional Stability | | |
| Fire Rating | Class '0' | BS EN ISO 1716 & 1182 rated A1 Non-Combustible BS 476 Part 4 Non-Combustible |
| Fixing | | |
| 400mm and 600mm centres | 9mm/12mm | 9mm/12mm |

Rendaboard A1 Non-Combustible

Euroform have recently improved the Rendaboard® range by adding Rendaboard® A1. Suitable for those applications that may require a non-combustible backer board such as certain high rise flats or offices.


Wind Loading

After rigorous testing, Rendaboard® with a minimum render finish of 8mm is able to withstand the wind loads as given in the CWCT standards with a good safety factor against failure.

Full report available on request.

ONE OF THE MOST WIDELY USED BASE BOARDS FOR APPLYING DIRECT RENDER POLYMERIC COATINGS





**New Rendaboard tests with weber.rend MT system
and Rendaboard® and Marmorit Finish**

Euroform commissioned the following tests:

- Wind Loading
- Soft & Hard Body Impact
- Bond Strength - incorporating hygrothermal freeze thaw conditions

All testing had a very successful outcome.

Full information available on request.

ONE OF THE MOST WIDELY USED BASE BOARDS FOR APPLYING DIRECT RENDER POLYMERIC COATINGS

Rendaboard® has been tested and approved with the following coatings for compatibility:

weber.rend MT system
www.netweber.co.uk



SM700® and SM700 PRO®
Multi purpose fibre reinforced basecoat.
www.marmorit.co.uk



HPX Base
with 12mm Rendaboard®
www.k-rend.co.uk



K&A Basecoat
www.wbs-ltd.co.uk



Maite Monocomposant, Parextherm,
Parexdirect
www.parex.co.uk



Genesis Base Coat
with 12mm Rendaboard® (applied to smooth face)
www.dryvit.co.uk



Rollercoat / Reno-prep
Long life exterior weatherproof coatings with over
25 years proof of performance
www.renotex.co.uk



Always check with the coatings manufacturer to ensure that the correct specification of render is applied to be used with the base board. You can also ask our technical team who will be happy to give you guidance.

ONE OF THE MOST WIDELY USED BASE BOARDS FOR APPLYING DIRECT RENDER POLYMERIC COATINGS

Euroform Products Ltd

Unit 2 Lyncastle Road
Warrington Cheshire WA4 4SN

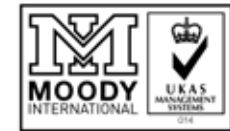
Telephone: **01925 860999**

Fax: **01925 860066**

www.euroform.co.uk

info@euroform.co.uk

Plus



MH/04/12 ISSUE1



Due to our policy of continuous development we reserve the right to change design and specifications without prior notice. Euroform Products Limited does not accept responsibility for any loss as a result of any company or person relying on material in this publication, or for any mistakes or misprints. Although every care is taken to ensure accuracy, this brochure is a general guide and specific technical advice is recommended before proceeding with any transaction. Specific fact sheets, or, technical information is available from Euroform technical department 01925 860999. Reproduction of any part of this publication in any manner is not permitted without prior written consent from Euroform Products Limited.