

Fire Performance

Thermal Conductivity

Extensive Range

Superior Performance Insulation

AS LOW AS
X020
Xtratherm

Walls

SR/TB-MF

Insulation for
Drylining Walls Mechanically
Fixed to Battens

Key Features

Superior Performance Phenolic

Thermal Conductivity
as low as 0.020W/mK

Low Smoke Obscuration

HCFC/CFC Free Zero ODP

Class 'O'/Low Risk Fire Rating

For New Build or Refurbishment

Fast Response Heating



Safe-R | SR Insulated Plaster Board

Xtratherm Safe-R is a superior performance rigid insulation with enhanced fire performance, consisting of a Class 'O' phenolic foam core with negligible smoke obscuration. Safe-R is faced with low emissivity aluminium facings both sides, and has a thermal conductivity as low as 0.020W/mK.

Thermal Lining Insulation

Xtratherm Safe-R Thermal Liner SR/TB-MF is a composite insulated panel of Xtratherm Phenolic core with a foil face one side bonded to plasterboard for mechanically fixing to internal walls. SR/TB-MF is designed to provide high levels of thermal insulation and dry lining in one operation for suitable masonry walls, sloped rafters and ceilings in new build and refurbishment situations.

General

The joints between Xtratherm ST/TB-MF boards should be taped and filled in accordance with drylining good practice. The Safe-R Thermal Liner boards achieve a resistance greater than 100MN.s/g. Improved vapour resistivity when required, can be provided with two coats of Drywall Sealer.

An important factor when dry lining a wall is to provide fire stops along the top and bottom of each sheet and around all openings (Doors & Windows etc). These are provided by the timber battens and prevent fire, penetrating behind the insulation layer, it also helps to prevent thermal looping.

Specification Clause

The insulated dry lining insulation shall be Xtratherm Safe-R SR/TB (MF) _ _ _mm manufactured to BS EN 13166:2008 by Xtratherm, comprising a CFC/HCFC free rigid Phenolic core between low emissivity foil facings. To be installed in accordance with instructions issued by Xtratherm. Refer to NBS clause K10 205.



Property & Units

Density (Foam Core)
45 (Kg/m³)

Compressive Strength
>125 (kPa)

Water Vapour Resistivity
>100 (MNs/gm)

Thermal Conductivity
0.020 – 0.023 (W/mK)

Service Temperature
-20 to +100 (°C)

Xtratherm SR/TB-MF

Length (mm)
2400

Width (mm)
1200

Thickness (mm)
Plasterboard 12.5mm+
25, 30, 40, 50, 60, 75, 80, 90, 100

**Other sizes available subject to quantity and lead time.
Note: Standard product supplied UK - tapered edge - 12.5mm only*

Xtratherm Safe-R

Typical R-values

40mm
R-value: 1.739

50mm
R-value: 2.381

60mm
R-value: 2.857

75mm
R-value: 3.752

80mm
R-value: 3.810

100mm
R-value: 5.000

Installation Guidelines



Mechanically Fixing SR/TB-MF

Fix a pre-treated timber batten horizontally at ceiling level and another 20mm above the finished floor level.

Fix vertical battens at max 600mm centres.

Ensure battens are wide enough to offer 20mm support to all four edges of the plasterboard.

Pack battens if necessary to level the wall.

Trim all openings and service penetrations with timber battens.

Insulation should be cut back to accommodate an adjoining panel at external corners.



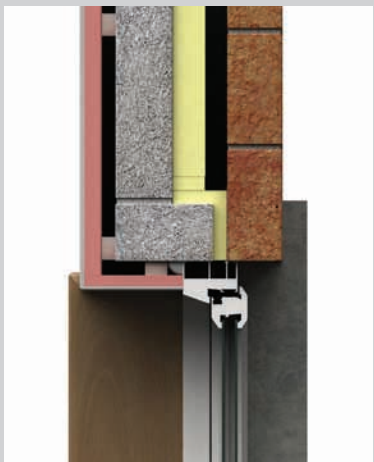
Lift the SR/TB-MF Thermal Liner into position using wedges on the floor.

Screws should be fixed to the timber batten at 150mm centres, at least 12mm in from the board edge. The fixings should penetrate at least 25mm into the batten.

Installation must be in accordance with good dry lining practice. BS 8212:1988 should be considered, careful setting out and planning is essential, fill any gaps with foam filler.

Accredited details should be followed to ensure that calculated performance is achieved.

The Safe-R Thermal Liner boards achieve a resistance greater than 100 MN.s/g. Improved vapour resistivity when required, can be provided with two coats of Drywall Sealer.



Typical U-values

Xtratherm SR/TB-MF Thickness (mm)					
Wall Type	50	60	75	80	100
300mm Cavity Wall Brick/Block	0.28	0.25	0.21	0.20	0.16
600mm Random Stone Wall	0.28	0.25	0.21	0.20	0.17
215mm Solid Brickwork	0.29	0.25	0.22	0.21	0.16

Contact Xtratherm Technical Support for specific U-value calculations.

Standards

Xtratherm Safe-R range is manufactured to EN ISO 13166 under Quality Systems approved to EN ISO 9001:2008 Quality Management, EN ISO 14001:2004 Environmental Management and BS OHSAS 18001 Health and Safety Management System.

Storage

Xtratherm Safe-R should be stored off the ground, on a clean, flat surface and must be stored under cover. The polythene wrapping is not considered adequate protection for outside exposure.

Cutting

Xtratherm Safe-R can be readily cut using a sharp knife or fine toothed saw. Ensure tight fitting of the insulation boards to achieve continuity of insulation as asked for in accredited details.

Work Interruptions

During breaks in the build process and at the end of each working day, board edges and joints should be protected from inclement weather. Boards that have been allowed to get wet should not be used.

Packaging

Xtratherm Safe-R is wrapped in polythene packs and each pack is labelled with details of grade/type, size and number of pieces per pack. The packaging should not be considered as protection from the elements.

Availability

Xtratherm products are available through builder's merchants and specialist distributors throughout the UK and Ireland. For the location of your nearest stockist please contact Xtratherm.

Environmental

Xtratherm Safe-R is manufactured under ISO 14001:2004 Environmental Management with all major components sourced under 14001 accredited suppliers. It is manufactured without the use of CFC's or HCFC's and has Zero Ozone Depletion Potential with a GWP of less than 5.

Durability

Xtratherm Safe-R products are stable, rot proof and will remain effective for the life span of the building, dependent on specification and installation. Care should be taken to avoid contact with acids, petrol, alkalis and mineral oil, when contact is made, clean materials in a safe manner before installation. Solvent based adhesive containing methyl ethyl ketone, should not be used.



Xtratherm Technical Services

All the members of our technical team are individually BBA accredited to help you reach your low energy goals. BBA qualified in U-value calculation, condensation risk and also Thermal Bridging 3D analysis backed by BRE accreditation – when you call Xtratherm, you can be assured you're speaking to a qualified person.



SR/CW

Walls

Insulation for Partial Fill Cavity Wall



SR/RS

Rainscreen

Insulation for Rainscreen Application



SR/TB

Walls

Insulation for Drylining Walls
Dot & Dab



SR/PR

Roofs

Insulation for Pitched Roofs



SR/TB-MF

Walls

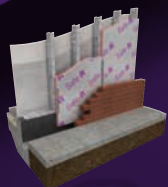
Insulation for Drylining Walls Mechanically Fixed to Battens



SR/STP

Soffit Plus

Insulation Composite for Structural Ceiling Applications



SR/FB

Walls

Insulation for Steel & Timber Framing



SR/UF

Floors

Insulation for Ground Supported and Suspended Floors

Rigid Insulation Flexible Solutions

Xtratherm UK Limited
Park Road Holmewood
Chesterfield Derbyshire
S42 5UY

Telephone
+ 44 (0) 371 222 1033
Facsimile
+ 44 (0) 371 222 1044

Contact
info@xtratherm.com

www.xtratherm.com